

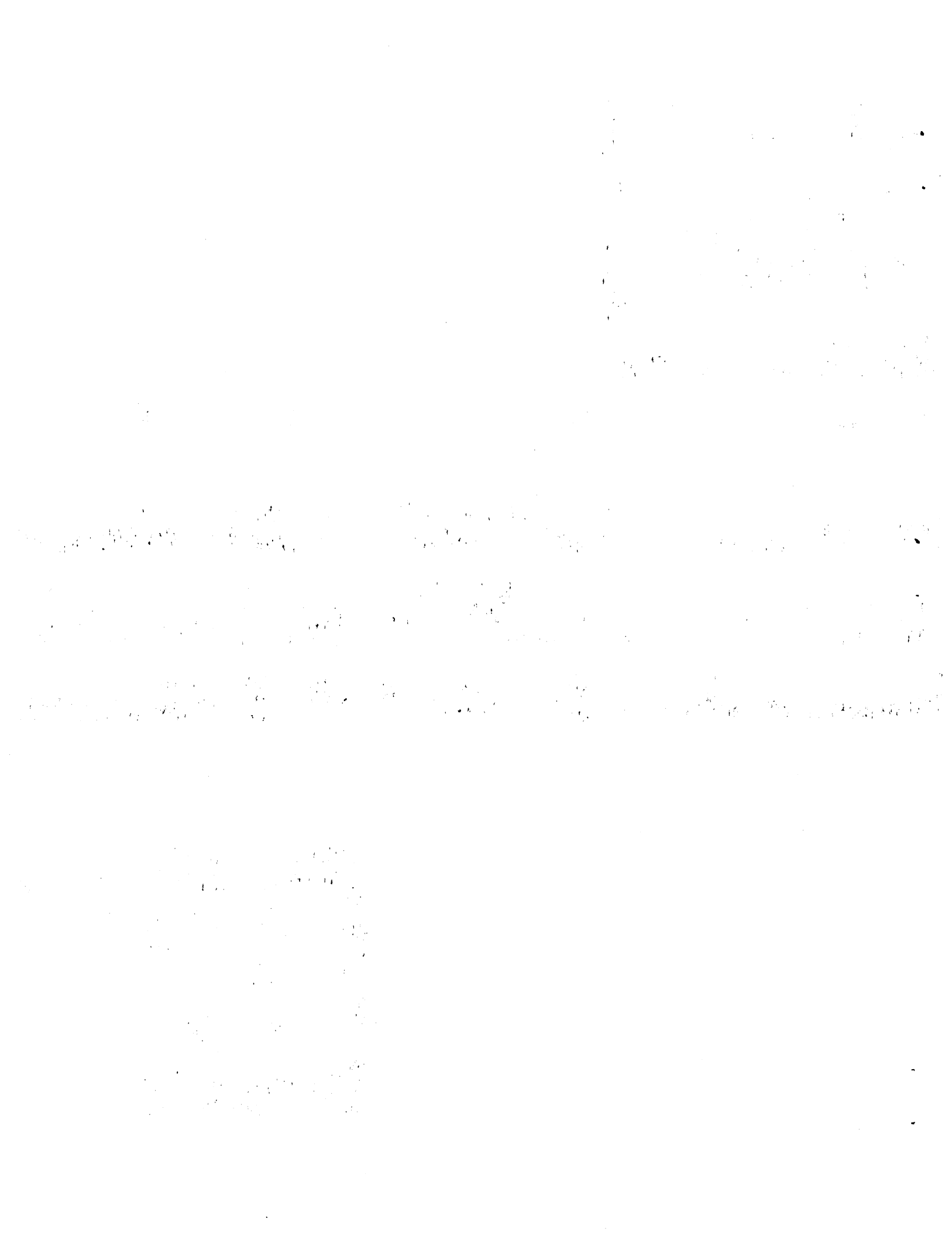


MARKETING FLORIDA VEGETABLES

SUMMARY

1986-87

Season



MARKETING FLORIDA VEGETABLES
Summary 1986-87

U.S. Department of Agriculture
Agricultural Marketing Service
Fruit and Vegetable Division
Market News Branch

Florida Department of Agriculture
and Consumer Services
Division of Marketing
Bureau of Market News

FEDERAL-STATE MARKET NEWS SERVICE

P.O. Box 1148

Winter Park, Florida 32790

November, 1987

We wish to THANK the many persons and firms who have contributed supply, price and other market information on Florida vegetables this past season. Their information made the daily reports and this summary possible.

Additional copies of this Summary are available upon request.

M87T3

H. B. Buchanan, Local Representative
Winter Park, Florida
Released: November, 1987

TABLE OF CONTENTS

	<u>Page</u>
Container net weights	5
Dates of planting and harvesting vegetables	6
Commodity highlights	7-11
1986-87 crop year supply and price tables, by commodity	
Beans	12-13
Cabbage	14-15
Carrots	16-17
Cauliflower	18
Celery	19-20
Chinese Cabbage	21
Corn	22-23
Cucumbers	24-25
Eggplant	26
Endive-Escarole	27-28
Lettuce	29-31
Parsley	32
Peppers	33-36
Potatoes	37-38
Radishes	39
Squash	40-41
Strawberries	42-43
Tomatoes	44-46
Lake Okeechobee Area Shipments	47-49
Pompano Beach State Farmer's Market Shipments	50-52
Imports	53-54

FACTORS USED IN THE FLORIDA F&V SHIPMENT CONVERSIONS

As of January 1, 1987

Commodity	Container	Truck package weight	Rail cars total weight	Piggy-Back van total weight
<u>Citrus</u>		<u>Pounds</u>	<u>Pounds</u>	<u>Pounds</u>
Grapefruit	Carton, Crate	40	60,000	45,000
Oranges	Carton, Crate	43	60,000	45,000
Tangelos	Carton, Crate	43	60,000	45,000
Tangerines	Carton, Crate	43	60,000	45,000
Temples	Carton, Crate	43	60,000	45,000
Miscellaneous	Carton	45	60,000	45,000
<u>Vegetables</u>				
Beans	Bushel	30	60,000	32,000
Cabbage	Crt, Sks, Ctn	50	60,000	45,000
Carrots	48-1 lb	48 & 50	80,000	40,000
Cauliflower	Carton	25	42,000	31,000
Celery	Crate, Carton	60	60,000	45,000
Chinese Cabbage	Crate	50	60,000	40,000
Corn	Crate	42	60,000	42,000
Cucumbers	Bu & 1-1/9	55	60,000	45,000
Eggplant	Bu & 1-1/9	33	60,000	40,000
Endive-Escarole	Crate, Carton	25	60,000	31,000
Greens	Bushel	25	34,000	25,000
Lettuce-IB	Carton	50	60,000	45,000
Lettuce-Rom	1-1/9 bushel	22	60,000	36,000
Lettuce-Oth	1-1/9 bushel	22	40,000	20,000
Okra	Bushel	30	60,000	32,000
Onions, Dry	Sacks	50	100,000	45,000
Parsley	Carton	21	40,000	21,000
Peppers	Bu & 1-1/9	28	57,000	41,000
Potatoes	Cwt	100	80,000	40,000
Radishes-Pkg	30-6 oz	12	60,000	40,000
Radishes-Bulk	Bag	40	60,000	40,000
Southern Peas	Bushel	25	31,000	24,000
Squash	Bushel & 1-1/9	42	60,000	40,000
Tomatoes	Carton	25	65,000	40,000
Tomatoes-Cherry	Flat	15	--	--
Vegetables Other-Fresh		25	60,000	40,000
Vegetables Other-Proc	Actual weight		60,000	40,000
<u>Miscellaneous Fruits</u>				
Avocados	Flat	13	60,000	40,000
Lemons	Carton	42	89,000	45,000
Limes	Carton	38	60,000	36,000
Mangos	Flat	14	60,000	40,000
Peaches	1/2 bushel	25	60,000	35,000
Strawberries	Flat	12	40,000	24,000
Watermelons	Actual weight		60,000	45,000
Other Fruit	Package	45	60,000	35,000

**FLORIDA: USUAL DATES FOR PLANTING AND HARVESTING VEGETABLES
MELONS, POTATOES, AND STRAWBERRIES**

Crop	Planting Dates ^{1/}	Usual Harvest Dates		
		Begins	Most Active	Ends
Snap Beans ^{2/}	Aug. 15-Apr. 1	Oct. 15	Nov. 1-May 1	Jun. 15
Cabbage	Sep. 1-Mar. 15	Oct. 25	Jan. 1-Apr. 15	Jun. 15
Carrots	Aug. 15-Feb. 15	Nov. 1	Dec. 15-May 25	Jun. 10
Cantaloupes	Jan. 15-Mar. 15	Mar. 10	May 15-Jun. 20	Jul. 10
Cauliflower	Sep. 15-Jan. 1	Dec. 15	Jan. 1-Mar. 15	Apr. 15
Celery	Aug. 1-Apr. 15	Oct. 25	Dec. 15-Jun. 1	Jul. 10
Chinese Cabbage	Sep. 1-Apr. 1	Oct. 20	Nov. 15-May 15	Jun. 1
Sweet Corn	Jul. 25-May 1	Sep. 25	Nov. 15-Jun. 15	Jul. 10
Cucumbers	Aug. 1-Apr. 1	Sep. 20	Nov. 1-Dec. 15	
			Apr. 20-Jun. 1	Jul. 1
Eggplant	Jul. 15-Apr. 1	Oct. 1	Nov. 15-Jul. 1	Aug. 1
Endive & Escarole	Aug. 25-Apr. 1	Oct. 20	Nov. 15-May 25	Jun. 1
Lettuce & Romaine	Aug. 25-Apr. 1	Oct. 20	Dec. 1-May 1	Jun. 1
Parsley	Aug. 25-Apr. 1	Oct. 20	Nov. 15-May 25	Jun. 1
Green Peppers	Aug. 1-Mar. 15	Oct. 20	Nov. 15-Jun. 15	Jul. 1
Potatoes	Sep. 15-Mar. 1	Jan. 1	Jan. 15-Jun. 15	Jul. 1
Radishes	Sep. 1-May 15	Sep. 20	Nov. 15-May 1	Mar. 15
Spinach (Proc.)	Nov. 1-Jan. 1	Jan. 15	Feb. 1-Mar. 1	Mar. 15
Squash ^{3/}	Aug. 15-Apr. 1	Sep. 1	Nov. 15-May 15	Jul. 1
Strawberries	Oct. 1-Nov. 15	Dec. 15	Feb. 1-Apr. 1	May 15
Tomatoes	Jul. 25-Mar. 15	Oct. 20	Nov. 15-Jun. 1	Jul. 1
Watermelons	Dec. 15-Apr. 1	Apr. 10	May 1-Jul. 1	Jul. 15

^{1/} Usual date direct seeded or transplanted.

^{2/} Includes Pole Beans.

^{3/} A small acreage of summer squash is marketed during July and August.

VEGETABLE HIGHLIGHTS

BEANS

3,128,000 packages of beans were shipped by Florida growers during the 1986-87 season, an increase of 9 percent from the 2,871,000 shipped one season earlier. The Pompano State Farmers Market continued to be a minor factor in the Florida bean deal, with only 44,000 packages being traded across the platform.

Dade county is the predominant bean production area, with supplies from November into May, with other areas of South, Central, and North Florida having significant supplies in the early Fall and late Spring.

Growing conditions were favorable early in the fall and hot and humid weather continued into December, making quality a problem. Central Florida shippers were in the deal well into December this season, due to unseasonably warm weather. Conditions continued favorable for winter growing and harvesting in the Dade county area. However, as a result of cold weather and frost in early April, central and north Florida growers were 1-2 weeks late in beginning harvest this season, causing bean supplies to be light as Dade county volume decreased seasonally.

Prices at shipping point ranged generally \$6.00-\$10.00 for round green type in bushel hampers and crates in the Fall due to the heavy supplies brought on by the warm weather. Prices stayed at this season low level from mid-November until after the first of 1987. Then seasonally lighter supplies prompted higher prices in February in the \$14.00-\$18.00 range. Prices then decreased as spring supplies increased to \$7.00-\$10.00 in April. However, as the gap between early and late fields became evident, prices were pushed to \$18.00-\$20.00 in mid-May.

Growers also marketed notable volumes of pole type, Kentucky wonder type, and wax type beans this season.

Florida beans are packed mostly in bushel hampers and crates, but a new container in the deal this season was the bushel carton.

CABBAGE

Florida growers shipped 3,895,000 crates of cabbage during the 1986-87 season. This was over 7 percent more than the 3,614,000 crates shipped during 1985-86. Acreage planted during 1986-87 in the Hastings-Sanford areas continued to decline due to reduced yields from cold temperatures in the previous growing seasons. There was some increase in acreage in West Central and South Florida.

Prices for the season per carton or crate ranged from a high of \$6.00 at the beginning, in December, and end of the growing season (May) with a low of \$3.00 during early March. Most volume moved in the \$3.50-\$4.50 range.

Round green type cabbage was packed in a 1 3/5 and 1 3/4 bushel crates, 50 pound cartons and 50 pound sacks. Light amounts of Red and Savoy types were also produced.

CARROTS

Florida shipped 1,427,000 sacks of fresh market carrots during the 1986-87 season. This was a 61 percent increase over the freeze damaged crop the previous season, when 883,000 sacks were shipped.

Growers shipped an additional 815,000 cartons of miniature type carrots in the 1986-87 season, compared to 593,000 cartons in 1985-86.

Growing conditions were mostly good throughout the growing season. Regular type carrots are mostly grown in the Central Florida area, while the miniature type is grown in both the South and Central areas.

Prices for regular type carrots ranged from \$4.00-\$8.00, mostly \$4.50-\$5.00, per sack of 48-1 pound film bags medium-large size.

Prices for miniature type carrots per carton of 20-12 ounce film bags ranged \$6.00-\$10.00 from November through January and \$2.50-\$5.00 February through May when supplies were heavy.

CAULIFLOWER

Florida growers shipped 252,000 cartons of cauliflower from the state during 1986-87. This was 40 percent less than the 425,000 cartons shipped during 1985-86. No official acreage estimates are available for the crop. The harvest generally runs from late November to mid-May. This year above average temperatures in December caused some fields not to be harvested and in need of replanting. No F.O.B. was obtained until mid-January. All acreage this season was planted in central Florida.

Prices for carton film wrapped 12s, generally ranged from \$6.00-\$7.00 for most of the season.

CELERY

Florida growers shipped 4,053,000 crates of celery during the 1986-87 season. This was only slightly more than the 4,049,000 crates shipped during 1985-86.

Early transplanting was completed generally on schedule and growing conditions were generally good. Yields this season were comparable to last season.

The main growing areas for celery are the Lake Okechobee section in South Florida and the Zellwood section in Central Florida.

Prices ranged from \$5.00 to \$10.00 per crate of 2 dozen stalks during the season, with peak prices throughout January.

Celery varieties were mostly unchanged. The fourteen inch wirebound crates remained the principal shipping container.

CORN

Florida growers shipped 7,186,000 crates of sweet corn in the 1986-87 season, an increase of 3 percent compared to the 6,961,000 crates shipped in 1985-86.

Growing conditions were good early in the season. However some plantings were damaged by Spring frosts. Normal seasonal shipments were achieved in late March.

Prices for yellow corn were \$4.00-\$8.00 most of the season, except mid-January through February, with very light supplies the market was \$9.00-\$12.00.

The main varieties of yellow corn grown included Summer Sweet, Winter Green, Bell Ringer, and Guardian. A lighter quantity of white corn was available during the season.

CUCUMBERS

Shipments of Florida cucumbers for the season totalled 4,767,000 as compared with 5,111,000 packages for the 1985-86 season, a decrease of over 6 percent. 505,000 packages were traded on the Pompano State Farmers Market this year, most of that during the spring season. The farmers market handled slightly less volume during the previous season.

Cucumbers are grown throughout Florida, with the major producing areas in the southeast and west central areas of the state. The fall harvest lasted from late October to early January, with very warm growing conditions for most of that period. Florida cucumber supplies are almost non-existent from early January to mid-March. Early spring supplies came on in south Florida very heavily from mid to late March due to very good early spring growing conditions. However, unseasonably cold weather in early April left many plantings in West Central and North Florida heavily damaged and delayed the beginning of harvest for 2-3 weeks. South Florida plantings were less heavily damaged, but did experience some windburn. Cucumber supplies were not plentiful the rest of the season in South Florida as growers finished for the season before many Central Florida growers were able to begin their spring harvest.

Central and North Florida growers had much acreage replanted due to damage caused by the April freeze. Most of this came to harvest at about the same time as competing areas from other states.

1 1/9 bushel cartons of waxed mediums were selling at \$10.00-\$16.00 early in the fall season, but quickly fell and hovered in the \$5.00-\$8.00 range for most of November and December. Prices gained strength as fall supplies cleaned up and were as high as \$16.00 in early January. Prices for spring cucumbers were initially buoyed in the \$14.00-\$18.00 range in mid-March by a winter import deal that was characterized by less volume than in recent years and variable quality. As supplies became heavy very quickly, prices fell to \$5.00-\$7.00 in early April. But, as early South Florida growers finished for the season, the market was strengthened and prices ranged mostly \$14.00-\$18.00 through mid-May. As supplies increased, prices in late May and June declined sharply.

Florida cucumbers are packed mostly in 1 1/9 bushel cartons and 24 count cartons of medium-large sized fruit.

EGGPLANT

Florida shipments of eggplant for the 1986-1987 season were 1,330,000, about the same as the 1,331,000 packages moved the previous season. Shipments from the Pompano State Farmers Market were substantially less with 563,000 packages in 1986-87 compared to 706,000 in the previous season.

Eggplant is grown in most areas of Florida, but the southeast area around Pompano Beach accounts for most supplies. Growing conditions were good in the fall as hot weather continued later in the year than usual. Ample supplies continued through February when most growers completed harvest until new plantings were ready in April. Supplies were again ample in late April and early May, but decreased in late May as south Florida harvest declined. Central and North Florida growers began general harvesting in early June.

Prices for bushel and 1 1/9 bushel cartons were at \$5.00-\$7.00 in early November, but ranged from \$3.00-5.00 from then until mid-February. At that point the market strengthened and season high prices of \$15.00 were seen in late March. As spring supplies increased, prices again dropped to the \$3.00-\$5.00 range in late April and early May before strengthening again until supplies increased in early June.

Eggplant is packed mostly in bushel and 1 1/9 bushel cartons, with most southeast area growers using the bushel cartons. Italian type eggplant is packed in 1/2 bushel cartons.

ENDIVE-ESCAROLE

In the 1986-87 growing season, Florida growers shipped 1,248,000 crates of endive and escarole. This was a 14 percent decrease to the 1,458,000 crates shipped during the 1985-86 crop year.

The primary growing sections for endive and escarole are the Lake Okeechobee area in South Florida and the Zellwood area in Central Florida.

Prices per 1 1/9 bushel crate started in November with endive at \$5.00 and ranged from \$4.00-\$6.00 through February. Escarole started at \$4.00 and generally ranged \$3.50-\$6.00 with a peak of \$8.00 in late February. Both endive and escarole prices, from March through the end of the harvest in May, were similar and generally ranged \$3.00-\$5.00.

The major shipping containers are the 1 1/9 bushel wirebound crate and a carton containing 24 heads.

LETTUCE

During the 1986-87 season Florida growers shipped 1,873,000 cartons of lettuce which was a decrease of over 30 percent compared to the 2,789,000 cartons shipped during 1985-1986. The **ICEBERG** type accounts for nearly 60 percent of the total packages shipped.

Prices at shipping point for **ICEBERG** type generally ranged from \$4.00 to \$8.00 per carton of 24 heads, a peak price of \$10.00 occurred in late March. **ROMAINE** type ranged from \$3.00 to \$6.00 per 1 1/9 bushel carton or crate. **BIBB** type ranged from \$3.00 to \$6.00 per carton of 24 heads. **BOSTON** type ranged from \$3.00 to \$6.00, mostly \$4.00, per carton or crate of 24 heads. **LEAF** type ranged from \$3.00 to \$6.00 for 4/5 bushel cartons or crates.

The Romaine type is packed in cartons containing 24 heads and the 1 1/9 bushel containers.

PEPPERS

Bell pepper shipments from Florida for the 1986-87 season were 9,482,000 packages, a slight increase over shipments of the previous season. 1,334,000 packages were traded on the Pompano State Farmers Market, an increase over the 1,183,000 packages in the previous season.

The southwest area continues to be the major production area, followed by the southeast, west central, and north Florida areas. Growing conditions were generally good in the Fall and Winter months, with good supplies all winter and no damaging frosts until early April, when West Central and North Florida areas were heavily damaged. South Florida plantings also received moderate damage in that unseasonably cold weather.

F.O.B. Shipping point prices on California wonder type green 1 1/9 bushel cartons extra-large were at \$12.00-\$14.00 in mid-November, but then traded in the \$7.00-\$10.00 range until mid-March. As many south Florida growers then had gaps in supply and west central area growers were late to begin harvesting, the market strengthened and season high prices of \$25.00 were reported in early April and early May. Prices in late April and late May ranged \$12.00-\$16.00. The harvesting gap in early June, a result of frosts and some hail damage, sent prices as high as \$35.00, before supplies increased later in the month.

Bell peppers are packed in 1 1/9 bushel containers, with most packed in cartons and a few packed in crates.

PEPPERS, OTHER

Florida growers shipped 10,064,000 cartons of other type peppers during the 1986-87 season. These shipments were made up of Cuban type peppers packed in 1 1/9 bushel cartons and crates, Longhots packed in bushel and 1 1/9 bushel cartons and crates, and Fingerhots, Hungarian Wax and Jalapenos packed in 1/2 or 5/9 bushel cartons. These other type peppers are grown in all areas of Florida, with only South Florida in harvest through the winter.

SOUTH FLORIDA POTATOES

Potato winter crop acreage in South Florida was reported at 7,100 acres, a slight percent decline as compared to 7,200 acres in 1986.

Round red potatoes, with a few round whites, are grown in the Stuart, Fort Myers and Dade County areas. Most south Florida potato production is in the Dade county areas. Earliest harvest began in the Stuart area in late January, followed by the Fort Myers and Dade County areas, where all shippers were working by late February. Growing conditions were good in all areas with quality very good in the early harvest and good through the end of the season. Almost all harvest was complete by the end of April. Prices for 50 lb sacks round reds size A were \$9.00-10.00, from late February until early April. Then prices began a gradual climb and were in the \$15.00-20.00 range at the end of April. Size B prices were \$14.00-\$16.00 for the entire season. Round Whites, Lechiper variety, were also reported.

Most South Florida potatoes are packed in 50 lb paper sacks, but some move in 40 lb cartons. Truck transportation is used to move most of the south Florida potato crop, with only a few by rail-truck.

NORTH FLORIDA POTATOES

This area centers around Flagler, Putnam and St. Johns Counties with very light acreage in Suwannee County. According to the Crop Reporting Service, acreage harvested in north Florida was 25,000 compared to 24,500 in 1986. Yields were much lower than last year due to rainy weather during February and March. The U.S. Department of Agriculture declared the above counties a disaster area in late June.

Planting was completed in mid-March, several weeks later than normal, due to need for considerable replanting caused by wet weather. Harvest began in mid-April. Heaviest shipments occurred through May and the first week of June, with peak movement the week ending May 16th. Movement in mid-June was much higher than last year.

Processing stock potatoes moved about evenly divided on open market and contract sales. Contract prices ranged from \$4.75-\$5.25 bulk per cwt. Most movement on the open market occurred at about \$14.00 through brokers and other dealers.

Table stock prices ranged from \$10.00 to \$12.00 per 50 pound sack, U.S. One Size A, including some non-size A Round Whites. Most of the Whites originally planted for table consumption were diverted to processing stock, due to strong demand on high open market prices. Light acreage of Reds were also planted.

Trucks were generally used for shipping the crop. A relatively small volume of the crop was moved via rail-truck (piggyback vans).

RADISHES

There were 5,789,000 cartons of radishes shipped from Florida in 1986-87. This was a slight increase compared to the 1985-86 shipments of 5,717,000 cartons. Growing conditions were generally good and general harvesting was about two weeks earlier than the previous season.

Prices at shipping point for Red Globe type packed in cartons of 30 - 6 ounce film bags ranged generally from \$2.00 to \$5.00, with a peak during mid-January of \$7.00.

Some red radishes were also packed in cartons containing 14 - 1 pound film bags, 24 - 8 ounce film bags and 40 pound film bags. White radishes were packed in cartons containing 24 - 8 ounce film bags.

Radishes were shipped by truck and rail-truck (piggyback vans).

SQUASH

Shipments of Florida squash came to 2,749,000 packages for the 1986-1987 season. That is a decrease of over 6 percent from the 2,936,000 packages leaving the state in the 1985-86 season. Squash traded on the Pompano State Farmers Market totalled 388,000 packages, a 102,000 package decrease from the previous season.

Both summer and winter type squash are grown in Florida. Zucchini, Yellow Straightneck and Yellow Crookneck are the major summer types, and there is light production of White Scallop. Winter types include Acorn, Spaghetti, Butternut and Buttercup, of which Acorn and Spaghetti make up the most volume. Squash is grown throughout Florida, with the major producing area being the southeast section, followed by the southwest, west central, and north Florida areas. Fall growing conditions were generally good and volume was heavy as unseasonably high temperatures persisted into December. No significant weather problems were encountered throughout the winter months, but unusually cold weather in early April damaged plantings and delayed harvest throughout Central and North Florida, leaving minor wind damage in south Florida.

Shipping point prices for 1/2 or 5/9 bushel cartons or crates small Zucchini ranged \$4.00-\$12.00 in November and December, then reached a high of \$18.00 in January. As Spring supplies increased, prices decreased to as low as \$4.00 in late March. Planting gaps strengthened the market to \$18.00-\$20.00 in early April, then prices declined to \$5.00-\$8.00 by late May. The same size pack of Yellow Straightneck traded mostly in the \$6.00-\$12.00 range through February, increasing to as high as \$16.00 by late March. Prices for most of May were \$8.00-\$10.00. 3/4 bushel crates of small Yellow Crookneck were as low as \$5.00 in late October, but rose and traded at \$15.00 for most of the time from late November to mid-February. Prices fell to \$6.00 about the first of April, but again rose and reached a season high of \$22.00 in mid-April. As supplies increased in Central and North Florida the price declined as low as \$8.00 in late May.

With the exception of Yellow Crookneck squash, all summer types were packed in 1/2 or 5/9 bushel cartons or crates. Yellow Crookneck squash is packed in 3/4 bushel crates. All winter types are packed in 1 1/9 bushel cartons and crates.

STRAWBERRIES

Florida strawberry acreage for the 1986-87 season was 4,900 acres, the same as the 1985-86 season.

Florida shipments for 1986-87 season were 3,508,000 flat cartons. This was a slight increase, compared to the 1985-86 shipments of 3,439,000 cartons. The major container for shipping continued to be a flat containing 12 pints. Most movement was by truck with loads generally palletized with 96 flats per pallet.

Planting began in late September and was completed by mid-November. The major varieties planted were Pajaro, Chandler and Selva.

Significant harvesting started in late November. Supplies increased through mid-January. Supplies in late January through the beginning of March were light. Good volume began again the second week of March with the week ending March 28th being the heaviest shipping week this season. Heavy rains during the last few days of March caused serious losses during a period expected to be in heavy seasonal harvest.

Shipments rose from the rain-curtailling period the week ending April 11th. Shipments declined significantly after the week ending April 18th.

The shipping point prices per 12-1 pint flat ranged from \$10.00 to \$20.00 in December and January. During the heaviest period of shipment in the last two weeks of March, prices ranged from \$6.00 to \$8.00. Prices ranged from \$3.00 to \$7.00 for the lighter April harvest.

TOMATOES

Florida growers shipped 52,521,000 25 pound cartons during 1986-87 season. This was a 4 percent increase compared to the 1985-86 season when 50,399,000 cartons were shipped. Shipment of tomatoes began in the Palmetto-Ruskin area in mid October. Movement continued to increase in volume through November and December, peaking the week ending December 20th. Shipments declined the week ending December 27th and remained fairly steady through January. Movement decreased through most of February, bottoming out the week ending March 14th. Shipments began increasing in mid-March and continued through most of May, with the heaviest shipments of the entire season occurring the week ending May 23rd., during the Palmetto-Ruskin harvest. Light volume was shipped from the Quincy area during June.

Prices received during the 1986-87 season generally ranged from \$6.00 to \$12.00, with a peak of \$17.00 in late November per 25 pound carton of 5x6 size mature greens.

CHERRY TOMATOES

In the 1986-87 growing season 1,987,000 12-pint flats of Cherry type tomatoes were shipped from Florida. This was a 12 percent decrease compared to the 2,258,000 flats shipped during the 1985-86 season. Cherry type tomatoes are grown in all areas of the State where other tomatoes are grown. The most volume is grown in Central Florida for Fall and Spring harvesting, followed by the South Florida areas for mostly winter harvesting.

The shipping point prices ranged from \$3.00 to \$14.00 per 12-pint flat.

BEANS: United States Total Recorded
Shipments 1986-87 Crop Year.

WEEK ENDING	Shipments			
	Florida	Georgia	Mexico	Total 1/
----1,000 package units or 30,000 lbs----				
Oct. 4	0	18	1	35
Oct. 11	5	33	0	67
Oct. 18	10	29	0	49
Oct. 25	20	18	1	40
Nov. 1	46	29	1	78
Nov. 8	79	21	1	104
Nov. 15	116	0	0	121
Nov. 22	136	0	9	151
Nov. 29	111	0	18	135
Dec. 6	121	0	35	161
Dec. 13	99	0	48	148
Dec. 20	104	0	47	151
Dec. 27	87	0	41	128
Jan. 3	84	0	53	137
Jan. 10	81	0	75	156
Jan. 17	73	0	52	125
Jan. 24	68	0	42	110
Jan. 31	67	0	45	112
Feb. 7	69	0	53	122
Feb. 14	70	0	57	127
Feb. 21	77	0	48	125
Feb. 28	79	0	28	107
Mar. 7	86	0	25	111
Mar. 14	109	0	29	138
Mar. 21	127	0	37	164
Mar. 28	129	0	25	154
Apr. 4	133	0	28	161
Apr. 11	132	0	15	147
Apr. 18	170	0	32	202
Apr. 25	136	0	24	160
May 2	121	0	8	132
May 9	101	0	8	114
May 16	124	5	8	141
May 23	53	15	5	78
May 30	55	40	3	99
Jun. 6	29	95	4	128
Jun. 13	17	80	10	107
Jun. 20	3	38	2	43
Jun. 27	1	4	2	7
TOTAL	3,128	425	920	4,575

1/ Total includes shipments from California, North Carolina and New Jersey.

**BEANS: Florida, Pole and Bush, FOB Shipping Point Prices
for Monday Compared with Wholesale Prices at Selected
Cities. 1986-87 Crop Year.**

Monday's Date	Pole Type			Round Green Type			
	S. Florida	Atlanta	Pompano	Florida	Chicago	New York	
	Mon Price	Mon Price	Mon Price	Mon Price	Mon Price	Mon Price	
----Dollars per bushel----							
Oct. 20	--	--	--	--	--	--	
27	--	--	--	--	--	22.00-25.00	
Nov. 3	10.00-13.00	18.00-19.00	--	10.00	15.00-17.00	18.00-20.00	
10	6.00	8.50- 9.00	--	6.00	11.00	10.00-12.00	
17	8.00	9.00	--	6.00	8.00-10.00	6.00- 8.00	
24	10.00	12.00-13.00	--	7.00- 8.00	13.00-15.00	15.00-17.00	
Dec. 1	6.00	10.50	--	6.00	12.00-13.00	12.00-14.00	
8	8.00	7.50- 8.00	--	8.00	12.00-13.00	12.00-14.00	
15	8.00	8.50- 9.00	--	8.00	13.00-14.00	14.00-15.00	
22	12.00	15.00	--	7.00	12.00-13.00	12.00-14.00	
29	12.00	14.00-15.00	--	6.00	13.00-14.00	14.00-15.00	
Jan. 5	14.00	14.50-15.00	--	10.00	12.00-13.00	12.00-14.00	
12	14.00	16.50-17.00	--	12.00	14.00-15.00	16.00-18.00	
19	14.00	16.50-17.00	--	12.00	18.00-20.00	17.00-18.00	
26	14.00	16.00-17.00	--	14.00	--	16.00-18.00	
Feb. 2	12.00	14.50-16.50	--	14.00	19.00-20.00	20.00-23.00	
9	14.00	16.50-17.00	--	16.00	25.00-26.00	23.00-25.00	
16	14.00	18.50-19.00	--	17.00	25.00	24.00-25.00	
23	14.00	16.50	--	10.00-12.00	21.00	17.00-18.00	
Mar. 2	12.00	14.00-15.00	--	10.00	14.00-15.00	12.00-14.00	
9	12.00	--	--	10.00	--	18.00-20.00	
16	12.00	14.50-15.00	--	12.00	18.00-19.00	17.00-18.00	
23	8.00	10.50	--	8.00	13.00-14.00	10.00-12.00	
30	6.00	9.00	--	8.00	13.00-14.00	12.00-14.00	
Apr. 6	15.00	12.50	--	12.00	16.00	14.00-16.00	
13	16.00	18.50	--	8.00	16.00-18.00*	13.00-15.00	
20	12.00	14.00-14.50	--	8.00	12.00*	10.00-12.00	
27	10.00	12.50-13.00	--	10.00	14.00-15.00	14.00-16.00	
May 4	16.00	15.00	--	20.00	17.00-18.00	14.00-15.00	
11	16.00	18.50-19.00	--	20.00	28.00-30.00*	20.00	
18	--	12.50-13.00	--	18.00	20.00-21.00	18.00-20.00	
25	--	--	--	18.00	25.00-26.00	20.00-23.00	
Jun. 1	--	21.00	--	12.00-14.00	24.00-25.00*	20.00	
8	--	16.00-18.00	--	--	18.00*	--	
15	--	11.00-12.00	--	--	12.00	--	
22	--	--	--	--	--	--	

* Handpicked

CABBAGE: United States Total Recorded
Shipments. 1986-87 Crop Year.

WEEK ENDING	Shipments						Total 1/
	Florida	Arizona & California	New York Wisconsin	Texas	Mexico		
----1,000 package units or 50,000 lbs----							
Oct. 4	0	34	127	9	1	328	
Oct. 11	0	26	143	0	0	320	
Oct. 18	0	24	160	0	0	299	
Oct. 25	0	33	136	14	0	247	
Nov. 1	0	29	135	77	0	253	
Nov. 8	1	28	124	100	1	260	
Nov. 15	1	33	103	145	0	300	
Nov. 22	5	29	110	215	1	421	
Nov. 29	13	26	91	160	0	348	
Dec. 6	48	33	103	211	1	466	
Dec. 13	70	39	87	227	0	484	
Dec. 20	102	32	81	253	0	532	
Dec. 27	102	29	79	231	1	468	
Jan. 3	138	45	90	262	0	553	
Jan. 10	157	66	92	382	0	697	
Jan. 17	136	49	68	306	0	559	
Jan. 24	130	35	72	319	0	556	
Jan. 31	144	46	79	355	0	624	
Feb. 7	125	53	67	354	0	599	
Feb. 14	155	46	88	423	1	713	
Feb. 21	160	37	81	309	1	588	
Feb. 28	160	20	83	323	1	587	
Mar. 7	220	19	78	437	1	755	
Mar. 14	216	17	85	489	0	807	
Mar. 21	153	19	74	405	0	651	
Mar. 28	141	7	83	370	0	601	
Apr. 4	169	7	77	347	0	600	
Apr. 11	207	26	79	358	0	670	
Apr. 18	192	33	56	354	0	635	
Apr. 25	202	38	63	325	1	629	
May 2	190	29	36	303	0	565	
May 9	166	27	0	359	0	587	
May 16	159	39	0	312	0	626	
May 23	104	35	0	179	0	453	
May 30	73	43	0	93	0	347	
Jun. 6	41	52	0	32	0	215	
Jun. 13	11	51	0	27	2	139	
Jun. 20	3	48	0	14	1	86	
Jun. 27	1	46	29	11	0	101	
TOTAL	3,895	1,328	2,859	9,090	13	18,669	

1/ Total includes shipments from Colorado, Georgia, North Carolina New Mexico and Virginia.

**CABBAGE (Round Green Type): Florida and Texas FOB Shipping Point
Prices on Monday Compared with Chicago and New York City
Wholesale Prices. 1986-87 Crop Year.**

Monday's Date	Florida Ship Pt Mon Price	New York City F1 Stock Mon Price	Lower Rio Grande Valley Mon Price 18-24 Count	Chicago Texas Stock Mon Price
----Dollars per 50 lb crates or cartons Medium size----				
Oct. 20	--	--	--	--
27	--	--	--	--
Nov. 3	--	--	--	7.00- 7.50
10	--	--	--	7.00- 8.00
17	--	--	--	7.00- 8.50
24	--	--	6.00	8.50- 9.00
Dec. 1	5.00- 6.00	--	4.25- 6.00	8.00- 8.50
8	4.00	--	4.00	7.00
15	3.50- 4.00	6.00- 7.00	3.50*	6.50- 7.00
22	3.50	5.00- 5.50	--	6.50
29	4.00- 4.50	6.00- 7.00	3.50	6.00- 7.00
Jan. 5	4.50	7.00- 8.00	--	7.00
12	4.00	6.00**	3.00*	6.00- 7.00
19	4.00	5.00**	3.00*	6.00- 6.50
26	4.00	6.50- 7.50**	3.00*	6.00- 6.50
Feb. 2	4.00	6.00- 7.00**	3.00*	5.50- 6.00
9	4.50	6.50- 7.00**	3.50*	6.00- 6.50
16	4.00	6.00- 6.50**	3.00*	6.00
23	3.50	5.00- 6.00**	3.00*	6.00
Mar. 2	3.00	5.00	--	5.50- 6.00
9	4.00	6.00- 7.00**	3.00*	5.50- 6.00
16	4.00	6.00- 7.00**	2.75- 3.00*	6.00
23	4.00	7.00- 8.00**	2.75- 3.00*	5.50
30	4.00	5.50- 6.00**	2.75*	5.50
Apr. 6	4.00	5.00**	3.00*	5.50
13	5.00	7.00	4.00*	7.00- 7.50
20	6.00	8.00	4.50	7.00- 7.50
27	5.50	8.00- 8.50	--	8.00
May 4	5.50	8.00-10.00	--	7.50
11	6.00	9.00-10.00	4.50- 5.00	8.00
18	5.00	8.00- 9.00	5.00	7.50- 8.00
25	5.00	7.00- 8.00	--	7.50- 8.00
June 1	--	7.00- 8.00	--	7.00- 7.50
8	--	--	--	12.00-13.00
15	--	--	--	--
22	--	--	--	--

* 18-22 Count
**Medium-Large

CARROTS: United States Total Recorded Shipments;
1986-87 Crop Year.

WEEK ENDING	Shipments				Total 1/
	Florida Regular Type	Arizona & California	Texas		
--1,000 pkg units or 48,000 lbs units--					
Oct. 4	0	327	2		403
Oct. 11	1	337	0		404
Oct. 18	0	347	0		390
Oct. 25	1	330	0		373
Nov. 1	0	376	0		419
Nov. 8	2	475	0		530
Nov. 15	1	457	0		501
Nov. 22	1	496	10		563
Nov. 29	2	428	24		509
Dec. 6	2	497	27		576
Dec. 13	6	523	1		562
Dec. 20	6	514	2		553
Dec. 27	14	406	10		440
Jan. 3	18	409	4		437
Jan. 10	36	557	44		644
Jan. 17	47	556	63		668
Jan. 24	42	548	69		661
Jan. 31	60	556	79		697
Feb. 7	59	489	77		627
Feb. 14	76	513	99		690
Feb. 21	71	500	87		660
Feb. 28	69	514	79		663
Mar. 7	96	529	116		744
Mar. 14	87	498	115		703
Mar. 21	71	486	106		666
Mar. 28	77	474	116		670
Apr. 4	35	516	134		687
Apr. 11	87	550	103		744
Apr. 18	62	535	93		694
Apr. 25	66	532	84		687
May 2	55	507	87		652
May 9	61	520	62		645
May 16	51	592	39		683
May 23	30	536	45		611
May 30	34	498	25		557
Jun. 6	47	486	2		536
Jun. 13	36	577	0		614
Jun. 20	15	566	0		582
Jun. 27	3	584	0		588
TOTAL	<u>1,427</u>	<u>19,141</u>	<u>1,804</u>		<u>23,033</u>

1/ Total includes shipments from Michigan and Mexico.

CARROTS (MINI) : United States Total Recorded Shipments;
 Florida Miniature and Regular Type FOB Shipping
 Point Prices for Monday, 1986-87 Crop Year.

WEEK ENDING	Shipments	Monday's Date	Miniature Type 20 - 12 oz cartons Florida	Regular Type Med-Lge Price 48-1 1b film bags Florida
	--1,000 pkg units-- or 15,000 lbs units		Dollars per carton	Dollars per sacks
Oct. 4	0			
Oct. 11	2			
Oct. 18	3			
Oct. 25	4	Oct. 20	--	--
Nov. 1	5	Oct. 27	--	--
Nov. 8	8	Nov. 3	8.00	--
Nov. 15	7	Nov. 10	6.00	--
Nov. 22	7	Nov. 17	6.00	--
Nov. 29	7	Nov. 24	6.00	--
Dec. 6	9	Dec. 1	6.00	--
Dec. 13	11	Dec. 8	7.00	8.00
Dec. 20	17	Dec. 15	8.00	7.00
Dec. 27	12	Dec. 22	8.00	7.00
Jan. 3	19	Dec. 29	8.00	7.00
Jan. 10	17	Jan. 5	10.00	7.00
Jan. 17	33	Jan. 12	10.00	6.00
Jan. 24	25	Jan. 19	10.00	5.00
Jan. 31	25	Jan. 26	8.00	5.00
Feb. 7	36	Feb. 2	6.00	5.00
Feb. 14	29	Feb. 9	5.00	5.00
Feb. 21	44	Feb. 16	3.50	4.50
Feb. 28	39	Feb. 23	2.50	3.50
Mar. 7	40	Mar. 2	2.50	4.00
Mar. 14	37	Mar. 9	2.50	4.00
Mar. 21	35	Mar. 16	2.50	4.50
Mar. 28	39	Mar. 23	2.50	4.50
Apr. 4	28	Mar. 30	3.00	--
Apr. 11	31	Apr. 6	3.00	--
Apr. 18	31	Apr. 13	5.00	4.50
Apr. 25	32	Apr. 20	5.00	4.50
May 2	25	Apr. 27	4.00	4.50
May 9	24	May 4	3.00	4.50
May 16	27	May 11	3.00	4.50
May 23	27	May 18	3.00	5.00
May 30	29	May 25	3.00	5.00
Jun. 6	27	Jun. 1	5.00	5.00
Jun. 13	15	Jun. 8	8.00	5.00
Jun. 20	8	Jun. 15	--	5.00
Jun. 27	1	Jun. 22	--	--
TOTAL	815			

CAULIFLOWER: United States Total Recorded Shipments.
 Florida FOB Shipping Point Prices for
 Monday, 1986-87 Crop Year.

WEEK ENDING	Shipments			Monday's Date	Florida FOB Prices	
	Florida	California	Total 1/		12s	16s
---1,000 package units or 22 ,000 lbs---				---Dols per carton---		
Oct. 4	0	337	409			
Oct. 11	0	369	447			
Oct. 18	0	407	515			
Oct. 25	0	410	523	Oct. 20	--	--
Nov. 1	0	471	573	Oct. 27	--	--
Nov. 8	0	399	516	Nov. 3	--	--
Nov. 15	0	455	696	Nov. 10	--	--
Nov. 22	4	534	762	Nov. 17	--	--
Nov. 29	0	305	448	Nov. 24	--	--
Dec. 6	1	314	483	Dec. 1	--	--
Dec. 13	5	321	546	Dec. 8	--	--
Dec. 20	5	275	481	Dec. 15	--	--
Dec. 27	4	286	507	Dec. 22	--	--
Jan. 3	3	238	480	Dec. 29	--	--
Jan. 10	1	263	519	Jan. 5	--	--
Jan. 17	1	159	389	Jan. 12	--	--
Jan. 24	16	114	254	Jan. 19	--	--
Jan. 31	30	248	555	Jan. 26	12.00	10.00
Feb. 7	23	325	711	Feb. 2	8.00- 9.00	6.00
Feb. 14	32	297	672	Feb. 9	6.00	4.00
Feb. 21	37	367	631	Feb. 16	6.00	4.00
Feb. 28	21	341	664	Feb. 23	6.00	5.00
Mar. 7	12	379	710	Mar. 2	7.00	5.00
Mar. 14	7	501	720	Mar. 9	7.00	5.00
Mar. 21	8	372	556	Mar. 16	5.00- 6.00	3.00- 4.00
Mar. 28	8	301	364	Mar. 23	--	--
Apr. 4	3	319	399	Mar. 30	--	--
Apr. 11	4	242	389	Apr. 6	--	--
Apr. 18	10	421	552	Apr. 13	--	--
Apr. 25	8	718	735	Apr. 20	--	--
May 2	3	659	662	Apr. 27	--	--
May 9	3	599	602	May 4	--	--
May 16	1	707	708	May 11	--	--
May 23	1	534	535	May 18	--	--
May 30	1	560	561	May 25	--	--
Jun. 6	0	645	645	Jun. 1	--	--
Jun. 13	0	528	528	Jun. 8	--	--
Jun. 20	0	433	433	Jun. 15	--	--
Jun. 27	0	367	369	Jun. 22	--	--
TOTAL	252	15,520	21,249			

1/ Total includes Arizona, New York, Texas and Mexico.

**CELERY: United States Total Recorded
Shipments. 1986-87 Crop Year.**

WEEK ENDING	Shipments			
	Florida	California	Texas	Total 1/
----1,000 package units or 60,000 lbs----				
Oct. 4	0	345	0	396
Oct. 11	0	421	0	429
Oct. 18	0	483	0	483
Oct. 25	0	481	0	481
Nov. 1	0	456	0	456
Nov. 8	11	671	0	682
Nov. 15	31	795	0	826
Nov. 22	65	804	8	885
Nov. 29	55	337	7	406
Dec. 6	66	450	29	574
Dec. 13	83	602	47	779
Dec. 20	121	566	46	779
Dec. 27	78	305	60	503
Jan. 3	88	277	44	453
Jan. 10	120	359	139	757
Jan. 17	73	334	101	609
Jan. 24	87	304	128	647
Jan. 31	112	324	114	664
Feb. 7	149	333	97	676
Feb. 14	151	396	81	709
Feb. 21	138	329	61	589
Feb. 28	139	344	57	597
Mar. 7	144	323	89	645
Mar. 14	157	311	58	584
Mar. 21	165	326	41	573
Mar. 28	137	320	53	563
Apr. 4	157	343	43	586
Apr. 11	183	410	27	647
Apr. 18	157	429	19	624
Apr. 25	139	359	5	508
May 2	137	294	9	449
May 9	193	233	8	442
May 16	210	373	9	601
May 23	163	407	1	572
May 30	182	317	0	499
Jun. 6	174	417	0	591
Jun. 13	96	460	0	556
Jun. 20	53	486	0	539
Jun. 27	39	485	0	530
TOTAL	4,053	16,009	1,381	22,889

1/ Total includes Michigan, New York and Mexico.

CELERY: Florida and California FOB Prices at Shipping Points
for Monday Compared with Wholesale Prices at New York
City. 1986-87 Crop Year.

Monday's Date	Florida FOB Price		New York City Mon Price Florida Stock		California FOB Price	New York City Mon Price California Stock
	2 Doz	3 Doz	2 Doz	3 Doz	2 Doz	2 Doz
----Dollars per 14 1/2 inch crates----						
Oct. 20	--	--	--	--	--	14.00-15.00
27	--	--	--	--	--	10.00-11.00
Nov. 3	--	--	--	--	8.00- 9.00	13.00
10	--	9.00	--	--	8.00	14.00
17	7.00	7.00	--	--	6.00- 7.00	12.00
24	5.00	6.00	9.00-10.00	--	4.50- 5.00	10.00
Dec. 1	5.00	5.50	9.00-10.00	--	6.00	10.00
8	6.00	4.00	9.00	9.00	7.00- 8.00	12.00-13.00
15	6.00	4.00	7.00- 9.00	7.00- 9.00	7.00- 8.00	10.00-12.00
22	6.00	4.00	7.00- 9.00	--	7.00	9.00-11.00
29	6.00	4.50	9.00	--	8.00- 9.00	10.00-11.00
Jan. 5	9.50	6.50	12.00-14.00	--	10.00-11.00	14.00-15.00
12	10.00	8.00	--	--	10.00-11.00	16.00-18.00
19	10.00	8.00	--	--	8.00- 9.00	13.00-14.00
26	9.00	7.50	--	--	10.00	13.00-15.00
Feb. 2	9.00	7.50	9.00-11.00	--	9.00	13.00-14.00
9	7.00	6.00	12.00	--	9.00	--
16	7.00	6.00	10.00	--	8.00	14.00-15.00
23	7.00	6.00	10.00	--	6.00- 7.00	14.00
Mar. 2	6.00	6.00	10.00	--	8.00	12.00
9	6.00	6.00	9.00-10.00	--	9.00	12.00-13.00
16	7.50	6.50	8.00- 9.00	--	9.00-10.00	12.00-14.00
23	6.00	6.50	9.00-10.00	--	6.00	12.00-14.00
30	6.00	6.50	--	--	6.00	10.00-12.00
Apr. 6	6.50	6.50	--	--	8.00	10.00-11.00
13	6.50	6.50	8.00-10.00	--	6.00- 7.00	12.00-14.00
20	5.00	5.50	8.00-10.00	--	5.00	11.00-12.00
27	5.00	5.50	--	--	4.00	10.00
May 4	5.00	5.00	7.00- 8.00	--	5.00	9.00-10.00
11	9.00	8.00	10.00	--	12.00	12.00-13.00
18	6.00	7.00	14.00-15.00	--	6.00- 7.00	15.00-17.00
25	5.00	5.00	10.00	--	4.00- 5.00	12.00-13.00
June 1	6.00	5.00	--	--	7.00- 8.00	10.00-11.00
8	7.00	5.00	--	--	7.00	11.00-12.00
15	8.00	7.00	--	--	5.00	13.00-14.00
22	8.00	8.00	--	--	4.00- 5.00	12.00-14.00

CHINESE CABBAGE: United States Total Recorded Shipments. Florida FOB
 Shipping Point Prices for Monday Compared to Wholesale
 Prices at Chicago, New York City and Philadelphia.
 1986-87 Crop Year.

WEEK ENDING	Shipments		Monday 's Date	Wholesale Markets			
	Florida	Arizona & Mexico		FOB Florida	Chicago	New York City	Philadelphia
--1,000 pkg units or 50,000 lbs--		----Dollars per Celery Crate----					
Oct. 4	0	0					
Oct. 11	0	0					
Oct. 18	0	0					
Oct. 25	1	0	Oct. 20	--	--	--	--
Nov. 1	0	0	Oct. 27	--	--	--	--
Nov. 8	2	0	Nov. 3	4.00- 5.00	--	--	--
Nov. 15	2	0	Nov. 10	5.00	--	--	6.00- 7.00
Nov. 22	3	1	Nov. 17	5.00	9.00-10.00	--	7.00- 8.00
Nov. 29	3	1	Nov. 24	5.00	9.00-10.00	8.00-10.00	6.00*
Dec. 6	9	3	Dec. 1	5.00	9.00-10.00	7.00- 8.00	7.00- 9.00
Dec. 13	5	3	Dec. 8	5.00	9.00-10.00	7.00- 8.00	9.00
Dec. 20	8	4	Dec. 15	6.00	9.00-10.00	7.00- 8.00	9.00
Dec. 27	8	6	Dec. 22	6.00	--	7.00- 8.00	9.00*
Jan. 3	4	4	Dec. 29	6.00	--	6.00- 8.00	6.00- 7.00
Jan. 10	7	4	Jan. 5	6.00	--	8.00- 9.00	9.00*
Jan. 17	7	5	Jan. 12	6.00	--	8.00- 9.00	10.00
Jan. 24	8	5	Jan. 19	5.00	9.00-10.00	8.00- 9.00	8.00-10.00
Jan. 31	5	5	Jan. 26	5.00	--	8.00	10.00
Feb. 7	6	6	Feb. 2	4.00	9.00-10.00	8.00	8.00-10.00
Feb. 14	8	11	Feb. 9	4.00	--	7.00- 8.00	--
Feb. 21	7	10	Feb. 16	4.00	9.00-10.00	9.00	7.00-10.00
Feb. 28	6	8	Feb. 23	7.00	9.00-10.00	9.00	--
Mar. 7	10	4	Mar. 2	7.00	10.00-11.00	9.00	8.00-10.00
Mar. 14	10	1	Mar. 9	6.00	11.00-12.00	8.00- 9.00	8.00
Mar. 21	5	3	Mar. 16	5.00	10.00-12.00	8.00- 9.00	7.00
Mar. 28	6	1	Mar. 23	5.00	11.00-12.00	8.00-10.00	8.00-10.00
Apr. 4	14	1	Mar. 30	4.00	9.00-10.00	8.00-10.00	7.00- 8.00
Apr. 11	10	0	Apr. 6	5.00	9.00-10.00	8.00-10.00	8.00- 9.00
Apr. 18	5	1	Apr. 13	5.00	9.00-10.00	6.00- 8.00	9.00
Apr. 25	6	1	Apr. 20	6.00	9.00-10.00	8.00- 9.00	--
May 2	8	0	Apr. 27	6.00	10.00-11.00	8.00- 9.00	8.00
May 9	6	0	May 4	6.00	10.00	8.00- 9.00	7.00- 9.00
May 16	8	0	May 11	6.00- 6.50	--	8.00- 9.00	12.00
May 23	4	0	May 18	8.00	11.00-12.00	8.00-10.00	--
May 30	12	0	May 25	8.00	12.00-13.00	8.00-10.00	12.00-14.00
Jun. 6	1	0	Jun. 1	--	--	8.00-10.00	--
Jun. 13	1	0	Jun. 8	--	--	--	--
Jun. 20	0	0	Jun. 15	--	--	--	--
Jun. 27	0	0	Jun. 22	--	--	--	--
TOTAL	205	79					

CORN, SWEET: United States Total Recorded
Shipments. 1986-87 Crop Year.

WEEK ENDING	Shipments					Total 1/
	Florida	Arizona & California	Texas	Mexico		
----1,000 package units or 42,000 lbs----						
Oct. 4	13	0	0	0		13
Oct. 11	47	2	0	0		49
Oct. 18	61	16	0	0		77
Oct. 25	61	40	0	0		101
Nov. 1	58	35	0	0		93
Nov. 8	93	30	0	1		124
Nov. 15	122	35	0	1		158
Nov. 22	107	28	0	1		136
Nov. 29	79	18	0	1		98
Dec. 6	98	21	0	4		123
Dec. 13	77	19	0	1		97
Dec. 20	66	5	0	0		71
Dec. 27	46	0	0	1		47
Jan. 3	80	0	0	1		81
Jan. 10	85	0	0	13		98
Jan. 17	40	0	0	18		58
Jan. 24	35	0	0	7		42
Jan. 31	34	0	0	2		36
Feb. 7	44	0	0	4		48
Feb. 14	40	0	0	13		53
Feb. 21	34	0	0	30		64
Feb. 28	53	0	0	18		71
Mar. 7	67	0	0	14		81
Mar. 14	74	0	0	14		88
Mar. 21	54	0	0	8		62
Mar. 28	69	0	0	7		76
Apr. 4	135	0	0	12		147
Apr. 11	171	0	0	10		181
Apr. 18	291	0	0	16		307
Apr. 25	340	1	0	28		369
May 2	481	31	0	113		625
May 9	585	387	0	1		973
May 16	680	419	0	1		1,100
May 23	562	383	7	0		952
May 30	430	245	2	2		679
Jun. 6	396	180	0	2		578
Jun. 13	547	150	0	1		698
Jun. 20	456	184	0	1		641
Jun. 27	475	270	0	0		745
TOTAL	7,186	2,499	9	346		10,040

1/ Total includes shipments in North Carolina, New York and New Jersey.

**CORN, SWEET: Florida FOB Shipping Point Prices on Monday
Compared with Wholesale Prices at Chicago,
New York City and Philadelphia.
1986-87 Crop Year.**

Monday's Date	Yellow Type				White Type
	Florida	Chicago	N. Y. City	Philadelphia	Florida
----Dollars per crate----					
Oct. 20	8.00	12.00	11.00-12.00	--	8.00
27	8.00	13.00	11.00-12.00	--	8.00
Nov. 3	8.00	13.00	11.00-12.00	10.00-11.00	8.00
10	5.00- 6.00	11.00	8.00-10.00	9.00-10.00	--
17	4.00- 5.00	10.00	6.00- 8.00	8.50	--
24	4.00	9.00	6.00- 7.00	--	--
Dec. 1	3.00	8.00- 9.00	5.00- 6.00	7.00	6.00
8	5.00	8.00	5.00- 6.00	7.00- 7.50	--
15	6.00- 7.00	8.00	9.00-10.00	9.00	4.00- 5.00
22	6.00- 7.00	--	9.00-10.00	10.50	--
29	4.00- 6.00	9.00	10.00	--	4.00
Jan. 5	3.00- 4.00	7.00- 9.00	7.00- 8.00	--	--
12	7.00- 8.00	8.00- 9.00	6.00- 8.00	--	10.00
19	9.00-10.00	--	--	--	12.00
26	10.00-11.00	15.00-16.00	15.00	--	12.00
Feb. 2	12.00	17.00-18.00	15.00	--	--
9	12.00	18.00	16.00-17.00	--	13.00
16	12.00	17.00-18.00	16.00	--	13.00
23	10.00	16.00	15.00	--	--
Mar. 2	7.00- 8.00	12.00-13.00	12.00	12.00	--
9	7.00- 8.00	11.00-12.00	11.00-12.00	10.00-12.00	10.00
16	7.00- 8.00	12.00	11.00-12.00	--	--
23	8.00	13.00	11.00-13.00	13.00	--
30	8.00	13.00	13.00	10.00-12.00	--
Apr. 6	8.00	13.00	12.00-14.00	11.50-12.00	--
13	6.50	10.00-11.00	10.00-12.00	10.00-10.50	--
20	6.50	11.50-12.00	10.00-11.00	--	6.50
27	5.00	10.00-11.00	9.00-10.00	8.50	5.00
May 4	5.00	9.00	8.00- 9.00	7.00- 7.50	4.50
11	5.00	8.00- 8.50	8.00- 9.00	8.00	5.00
18	6.50	9.00-10.00	9.00-10.00	8.00- 9.75	5.00
25	5.00	9.00	8.00- 9.00	7.00- 8.50	8.00
Jun. 1	5.00	8.00- 8.50	9.00-10.00	8.00- 9.00	9.00
8	4.00	9.00	11.00-12.00	9.00-11.00	9.00
15	4.00	9.00- 9.50	7.00- 8.00	7.00	7.00
22	4.00	8.50- 9.00	6.50- 7.50	5.00	4.00

CUCUMBERS: United States Total Recorded
Shipments. 1986-87 Crop Year.

WEEK ENDING	Shipments						Total 1/
	Florida	Georgia	S. Carolina	Texas	Mexico		
----1,000 package units or 55,000 lbs----							
Oct. 4	17	0	0	12	2	94	
Oct. 11	65	0	0	10	1	189	
Oct. 18	74	24	0	18	4	196	
Oct. 25	105	6	0	33	26	192	
Nov. 1	201	0	0	48	60	280	
Nov. 8	235	0	0	82	99	324	
Nov. 15	232	0	0	71	145	306	
Nov. 22	209	0	0	41	227	252	
Nov. 29	148	0	0	18	255	166	
Dec. 6	148	0	0	23	258	171	
Dec. 13	126	0	0	18	409	144	
Dec. 20	96	0	0	12	312	108	
Dec. 27	51	0	0	0	211	51	
Jan. 3	49	0	0	0	291	49	
Jan. 10	40	0	0	0	321	40	
Jan. 17	29	0	0	0	362	29	
Jan. 24	27	0	0	0	283	27	
Jan. 31	30	0	0	0	188	30	
Feb. 7	37	0	0	0	186	37	
Feb. 14	30	0	0	0	303	30	
Feb. 21	30	0	0	0	310	30	
Feb. 28	25	0	0	0	312	25	
Mar. 7	30	0	0	0	297	30	
Mar. 14	45	0	0	0	274	45	
Mar. 21	72	0	0	0	353	72	
Mar. 28	158	0	0	0	230	158	
Apr. 4	222	0	0	0	164	222	
Apr. 11	194	0	0	0	273	194	
Apr. 18	187	0	0	0	179	187	
Apr. 25	191	0	0	0	127	191	
May 2	265	0	0	5	44	270	
May 9	272	0	0	37	27	309	
May 16	312	0	0	38	17	350	
May 23	218	0	0	71	15	289	
May 30	258	12	0	60	14	330	
Jun. 6	199	81	68	35	5	383	
Jun. 13	93	81	0	20	6	194	
Jun. 20	40	46	0	13	1	99	
Jun. 27	7	18	0	3	3	229	
TOTAL	<u>4,767</u>	<u>268</u>	<u>68</u>	<u>668</u>	<u>6,594</u>	<u>6,322</u>	

1/ Total includes shipments from California, North Carolina, New York and Virginia.

**CUCUMBERS: Florida, West Mexico Imports, FOB Shipping Point Prices
for Monday Compared with Chicago, New York City and
Philadelphia. 1986-87 Crop Year.**

Monday's Date	Florida	West Mexico	Florida Stock		
	FOB Price	FOB Nogales Arizona	Chicago	N. Y. City	Philadelphia
----Dollars per 1 1/9 bushels----					
Oct. 20	--	--	15.00	--	--
27	14.00	--	--	16.00-18.00	19.00
Nov. 3	6.00- 8.00	--	12.00-14.00	10.00	9.00
10	5.00	--	9.00-10.00	7.00- 8.00	6.00- 7.00
17	5.00	--	8.00	6.00- 8.00	6.00- 7.00
24	6.00	--	8.00	8.00-10.00	--
Dec. 1	6.00	--	--	7.00- 8.00	7.00
8	7.00	6.00- 7.00	8.00- 8.50	7.00- 8.00	--
15	8.00	6.00	10.00-11.00	7.00- 9.00	9.00-10.00
22	8.00	5.00	--	--	8.00- 9.00
29	10.00	10.00	--	11.00-12.00	--
Jan. 5	16.00	14.00	--	17.00-18.00	--
12	--	18.00	--	18.00	--
19	--	18.00	--	--	--
26	--	18.00	--	--	--
Feb. 2	--	18.00-22.00	--	--	--
9	--	24.00-26.00	--	--	--
16	--	24.00	--	--	--
23	--	16.00	--	--	--
Mar. 2	--	16.00	--	--	--
9	--	16.00	--	--	--
16	18.00	16.00	--	--	22.00-23.00
23	8.00	8.00	17.00-18.00	12.00-15.00	16.00-18.00
30	5.00- 6.00	6.00	10.00-12.00	9.00	9.00
Apr. 6	10.00	10.00-12.00	8.00- 9.00	9.00-10.00	10.00-11.00
13	16.00	12.00	20.00-22.00	18.00-20.00	16.00-18.00
20	14.00	--	15.00-16.00	13.00-15.00	--
27	18.00	--	20.00	16.00-18.00	18.00
May 4	12.00-14.00	--	21.00-22.00	18.00-20.00	18.00-20.00
11	16.00	--	21.00	20.00-22.00	19.00-20.00
18	18.00	--	22.00-23.00	20.00-22.00	22.00
25	18.00-20.00	--	24.00-25.00	22.00-24.00	18.00-20.00
Jun. 1	6.00- 8.00	--	17.00-18.00	14.00-15.00	8.00-10.00
8	7.00- 8.00	--	12.00-13.00	8.00-10.00	--
15	12.00-14.00	--	17.00-18.00	14.00-15.00	--
22	5.00- 6.00	--	11.00-12.00	--	--

EGGPLANT: United States Total Recorded Shipments; Florida FOB Shipping
Point Prices for Monday Compared with Wholesale Prices at
New York City. 1986-87 Crop Year.

WEEK ENDING	Shipments			Monday 's Date	Florida	New York City
	Florida	Mexico	Total 1/		FOB Price	Wholesale Market
----1,000 package units or 33,000 lbs----				----Dollars per 1 1/9 bu----		
Oct. 4	13	0	13			
Oct. 11	24	0	24			
Oct. 18	32	0	35			
Oct. 25	27	1	31	Oct. 20	6.00- 7.00	8.00-10.00
Nov. 1	41	2	43	Oct. 27	6.00- 7.00	7.00- 9.00
Nov. 8	45	5	51	Nov. 3	6.00	--
Nov. 15	51	8	61	Nov. 10	5.00	3.00- 5.00
Nov. 22	49	19	72	Nov. 17	3.75- 5.00	3.00- 4.00
Nov. 29	39	22	66	Nov. 24	4.00- 4.50	4.00- 5.00
Dec. 6	51	26	83	Dec. 1	3.25- 4.00	5.00- 6.00
Dec. 13	42	41	88	Dec. 8	3.00- 4.00	3.00- 4.00
Dec. 20	35	32	70	Dec. 15	3.00- 3.50	3.00- 4.00
Dec. 27	27	27	54	Dec. 22	3.00- 3.50	3.00- 4.00
Jan. 3	37	32	69	Dec. 29	3.00	5.00- 7.00
Jan. 10	42	55	98	Jan. 5	3.50- 4.00	3.00- 4.00
Jan. 17	34	52	87	Jan. 12	5.00	4.00- 5.00
Jan. 24	30	51	81	Jan. 19	5.00	4.00- 5.00
Jan. 31	32	39	71	Jan. 26	5.00	--
Feb. 7	33	39	72	Feb. 2	4.00	3.00- 4.00
Feb. 14	36	54	90	Feb. 9	7.00- 8.00	8.00
Feb. 21	30	53	83	Feb. 16	7.00- 7.50	10.00-11.00
Feb. 28	24	35	59	Feb. 23	5.00	6.00- 7.00
Mar. 7	21	35	56	Mar. 2	8.00	7.00- 9.00
Mar. 14	17	62	79	Mar. 9	--	13.00-15.00
Mar. 21	16	56	72	Mar. 16	15.00	15.00-16.00
Mar. 28	16	41	57	Mar. 23	15.00	15.00
Apr. 4	28	40	68	Mar. 30	10.00	14.00-16.00
Apr. 11	32	58	90	Apr. 6	12.00	14.00-16.00
Apr. 18	39	25	64	Apr. 13	8.00	--
Apr. 25	48	24	72	Apr. 20	5.00	8.00-10.00
May 2	53	11	64	Apr. 27	4.00	5.00
May 9	49	16	65	May 4	4.00- 5.00	5.00
May 16	34	15	49	May 11	5.00	7.00- 8.00
May 23	38	13	51	May 18	--	10.00-12.00
May 30	40	6	46	May 25	12.00-13.00	15.00-16.00
Jun. 6	42	2	44	Jun. 1	10.00-12.00	12.00-14.00
Jun. 13	33	0	33	Jun. 8	10.00	--
Jun. 20	31	0	31	Jun. 15	8.00	12.00-13.00
Jun. 27	19	0	21	Jun. 22	5.00- 6.00	12.00-13.00
TOTAL	1,330	997	2,363			

1/ Total includes shipments from California, North Carolina and Texas.

ENDIVE-ESCAROLE: United States Total Recorded
Shipments. 1986-87 Crop Year.

WEEK ENDING	Shipments					Total
	Florida	Arizona	California	Mexico		
----1,000 package units or 25,000 lbs----						
Oct. 4	0	0	0	0	0	0
Oct. 11	0	0	0	0	0	0
Oct. 18	0	0	0	0	0	0
Oct. 25	2	0	0	0	0	2
Nov. 1	10	0	0	0	0	10
Nov. 8	23	0	0	0	0	23
Nov. 15	28	0	0	0	0	28
Nov. 22	44	0	0	0	0	44
Nov. 29	30	2	5	0	0	37
Dec. 6	38	3	7	1	0	49
Dec. 13	42	3	9	2	0	56
Dec. 20	40	0	10	4	0	54
Dec. 27	35	0	7	1	0	43
Jan. 3	36	0	12	1	0	49
Jan. 10	51	1	17	3	0	72
Jan. 17	47	1	8	2	0	58
Jan. 24	39	1	9	1	0	50
Jan. 31	41	2	12	0	0	55
Feb. 7	50	5	16	0	0	71
Feb. 14	48	2	7	1	0	58
Feb. 21	48	2	2	1	0	53
Feb. 28	42	2	2	1	0	47
Mar. 7	51	3	2	2	0	58
Mar. 14	54	2	3	1	0	60
Mar. 21	43	3	4	1	0	51
Mar. 28	52	2	5	0	0	59
Apr. 4	50	1	2	0	0	53
Apr. 11	52	3	0	0	0	55
Apr. 18	48	2	0	0	0	50
Apr. 25	37	0	0	0	0	37
May 2	46	0	0	0	0	46
May 9	38	1	0	0	0	39
May 16	38	0	0	0	0	38
May 23	30	0	0	0	0	30
May 30	13	0	0	0	0	13
Jun. 6	2	0	0	0	0	2
Jun. 13	0	0	0	0	0	0
Jun. 20	0	0	0	0	0	0
Jun. 27	0	0	0	0	0	0
TOTAL	<u>1,248</u>	<u>41</u>	<u>139</u>	<u>22</u>		<u>1,450</u>

ENDIVE-ESCAROLE: Florida FOB Shipping Point Prices Compared with
Chicago and New York City Wholesale Prices.
1986-87 Crop Year.

Monday's Date	Endive			Escarole		
	Florida	Chicago	New York City	Florida	Chicago	New York City
	Mon Price	Mon Price	Mon Price	Mon Price	Mon Price	Mon Price
----Dollars per crate----						
Oct. 20	--	--	--	--	--	--
27	--	10.00	--	--	--	--
Nov. 3	5.00	11.00	5.00- 6.00	4.00	--	5.00- 6.00
10	4.00	8.00	8.00	3.50	--	6.00- 7.00
17	4.00	8.00	7.00- 8.00	3.50	8.00	6.00- 7.00
24	4.00	8.00	6.00- 8.00	3.50	8.00	5.00- 6.00
Dec. 1	5.50	8.00	6.00- 8.00	5.00	8.00	6.00- 7.00
8	6.00	9.00	6.50- 7.50	5.50	9.00	6.50- 7.50
15	6.00- 6.50	10.00	9.00-10.00	5.50	9.00-10.00	8.00- 9.00
22	6.50	10.00	8.00- 9.00	5.50	9.00-10.00	8.50- 9.00
29	6.50	10.00	8.50- 9.50	5.50	9.00-10.00	7.50- 8.50
Jan. 5	6.50	10.00	9.50-10.00	5.50	9.00-10.00	8.50- 9.00
12	6.00	10.00	8.00- 9.00	5.00	9.00	8.00- 9.00
19	4.50- 5.50	10.00	8.00- 9.00	4.50	9.00	7.50- 8.00
26	4.00	9.00	6.00- 8.00	4.00	8.00- 8.50	6.00- 8.00
Feb. 2	4.00	8.00- 9.00	5.00- 7.00	4.00	8.00	6.00- 7.00
9	6.00	9.00	7.00	6.00	8.00	7.00- 7.50
16	6.00	10.00	8.50- 9.00	7.00	11.00-12.00	9.00-10.00
23	6.00	10.00	8.00- 9.00	8.00	12.00	9.00
Mar. 2	5.00	9.00	7.50- 8.00	5.00	10.00	8.00- 9.00
9	4.00	8.50	7.00- 7.50	4.00	8.50	7.00- 8.00
16	3.50	8.00	6.50- 7.00	3.50	8.00	6.50- 7.00
23	3.00	7.00	6.00- 7.00	3.00	7.00	6.00- 7.00
30	2.50	7.00	5.00- 6.00	2.50	7.00	5.00- 6.00
Apr. 6	3.00	7.00	5.00- 6.00	3.00	7.00	5.00- 6.00
13	5.00	7.00- 8.00	6.50- 7.50	5.00	7.00- 8.00	6.50- 7.50
20	5.00	7.00	7.00- 8.00	5.00	7.00	7.00- 8.00
27	3.00	7.00	6.50- 7.00	3.00	7.00	6.50- 7.00
May 4	3.00	7.00	6.00- 7.00	3.00	7.00	6.00- 7.00
11	2.50- 3.00	7.00	6.00- 6.50	2.50- 3.00	7.00	6.00- 6.50
18	5.00	8.00	7.00- 7.50	5.00	8.00	7.00- 7.50
25	6.00	8.00	9.00	6.00	8.00	9.00
Jun. 1	--	--	7.00- 8.00	--	--	7.00- 8.00
8	--	--	--	--	--	--
15	--	--	--	--	--	--
22	--	--	--	--	--	--

LETTUCE, ICEBERG: United States Total Recorded
Shipments. 1986-87 Crop Year

WEEK ENDING	Shipments						Total
	Florida	Arizona	California	Texas	Mexico		
----1,000 package units or 50,000 lbs----							
Oct. 4	0	130	2176	152	3	2613	
Oct. 11	0	128	2178	188	0	2682	
Oct. 18	1	52	2084	175	0	2487	
Oct. 25	0	84	2104	156	0	2500	
Nov. 1	0	100	2038	189	0	2516	
Nov. 8	1	111	1878	116	0	2222	
Nov. 15	1	415	1364	146	0	2072	
Nov. 22	1	982	980	9	18	1999	
Nov. 29	6	946	687	0	17	1656	
Dec. 6	16	1178	857	0	15	2066	
Dec. 13	20	1180	808	0	53	2061	
Dec. 20	24	1044	701	0	22	1791	
Dec. 27	18	742	756	0	10	1526	
Jan. 3	34	987	907	0	14	1942	
Jan. 10	27	1168	1183	0	83	2461	
Jan. 17	31	1142	1079	0	58	2310	
Jan. 24	31	846	1002	0	75	1954	
Jan. 31	40	942	933	0	33	1948	
Feb. 7	72	1203	1224	0	15	2514	
Feb. 14	61	1374	1122	0	11	2568	
Feb. 21	52	1243	1171	0	9	2475	
Feb. 28	53	979	1180	0	13	2225	
Mar. 7	68	962	1073	0	12	2115	
Mar. 14	41	1090	875	0	17	2023	
Mar. 21	62	1297	591	0	30	1980	
Mar. 28	89	1226	902	0	6	2223	
Apr. 4	74	1000	1496	0	5	2575	
Apr. 11	60	448	1902	0	28	2438	
Apr. 18	63	209	2186	0	11	2469	
Apr. 25	56	151	2229	0	2	2438	
May 2	89	77	2429	0	5	2600	
May 9	68	0	2485	16	2	2587	
May 16	18	0	2420	204	0	2846	
May 23	1	13	2538	221	0	2994	
May 30	0	79	2012	144	0	2379	
Jun. 6	0	131	2304	22	0	2479	
Jun. 13	0	93	2152	0	0	2245	
Jun. 20	0	10	2117	0	0	2127	
Jun. 27	0	0	2123	0	0	2123	
TOTAL	1178	23762	60246	1738	567	89229	

W/E: Week Ending Dates were based on 1986-87 season.
Total includes shipments from Colorado, New Jersey and New Mexico.

LETTUCE, ROMAINE: United States Total Recorded
Shipments. 1986-87 Crop Year.

WEEK ENDING	Shipments					Total 1/	Florida Other Types
	Florida	Arizona	California	Mexico			
----10,000 lbs units----							
Oct. 4	0	0	542	0	542	0	
Oct. 11	0	0	519	0	519	0	
Oct. 18	0	0	494	0	494	0	
Oct. 25	0	0	503	0	503	2	
Nov. 1	7	0	386	0	393	5	
Nov. 8	9	0	409	0	418	5	
Nov. 15	11	26	382	0	419	6	
Nov. 22	21	74	192	0	287	12	
Nov. 29	21	154	177	0	352	11	
Dec. 6	20	174	234	5	433	20	
Dec. 13	19	151	310	6	486	24	
Dec. 20	19	134	296	12	461	20	
Dec. 27	16	114	205	5	340	16	
Jan. 3	19	101	303	10	433	13	
Jan. 10	25	131	374	12	542	26	
Jan. 17	21	142	346	10	519	16	
Jan. 24	23	123	305	3	454	13	
Jan. 31	36	139	356	6	537	25	
Feb. 7	23	199	324	8	554	21	
Feb. 14	31	289	328	9	657	31	
Feb. 21	27	255	296	9	587	25	
Feb. 28	50	177	192	11	430	19	
Mar. 7	50	208	132	37	427	28	
Mar. 14	52	286	112	23	473	39	
Mar. 21	36	295	130	16	477	46	
Mar. 28	30	227	90	23	370	27	
Apr. 4	24	226	85	6	341	30	
Apr. 11	20	93	227	6	346	19	
Apr. 18	18	82	489	0	589	26	
Apr. 25	13	0	559	0	572	27	
May 2	16	0	706	0	722	28	
May 9	13	0	663	0	676	12	
May 16	11	0	581	0	592	8	
May 23	5	0	554	0	559	4	
May 30	1	0	585	0	586	2	
Jun. 6	1	0	533	0	534	0	
Jun. 13	0	0	556	0	556	1	
Jun. 20	1	0	525	0	526	0	
Jun. 27	0	0	495	0	495	0	
TOTAL	689	3800	14,495	217	19,201	607	

W/E: Week Ending Dates were based on 1986-87 season.

LETTUCE: Florida and California FOB Shipping Point
Prices for Monday, 1986-87 Crop Year.

Monday's Date	Bibb	Boston	Iceberg		Leaf	Romaine
	Florida	Florida	Arizona	Florida	Florida	Florida
	Ctns 24s	Ctns 24s	Ctns 24s	Ctns 24s	4/5 bus	1 1/9 bus crts
----Dollars per crate or carton----						
Oct. 20	--	--	--	--	--	--
27	--	--	--	--	--	--
Nov. 3	4.00- 5.00	--	--	--	5.00	4.00
10	--	4.00	10.00	--	5.00	3.00- 3.50
17	--	4.00	8.00	--	4.00	3.00
24	5.00	4.00	3.00- 3.50	--	5.00	3.00
Dec. 1	6.00	4.00	5.00- 6.10	5.00	4.00	3.00
8	6.00	4.00	6.00- 8.00	5.00	4.00	3.00
15	6.00	4.00	4.00- 6.00	5.00	3.00- 4.00	3.00
22	6.00	4.00	3.50- 4.00	5.00	4.00	3.00
29	6.00	4.00	4.00	5.00	4.00	3.00
Jan. 5	6.00	4.00	7.00	5.00	4.00	3.00
12	6.00	4.00	7.00	7.00	4.00	4.00
19	6.00	4.00	9.00	9.00	4.00	4.00
26	6.00	4.00	8.00- 9.00	8.00	3.00	5.00
Feb. 2	6.00	4.00	4.00- 5.00	5.00	4.00	5.00
9	6.00	4.00	3.00- 3.50	5.00	4.00	4.00
16	5.00	5.00	3.00	4.00	4.00	4.00
23	4.00	4.00	3.50- 4.50	4.00	4.00	4.00
Mar. 2	4.00	4.00	5.00- 6.00	7.00	4.00	5.00
9	4.00	4.00	7.00- 8.00	7.00	4.00	6.00
16	4.00	4.00	6.00- 7.00	8.00	4.00	6.00
23	4.00	4.00	10.00-12.00	10.00	3.00	4.00
30	4.00	4.00	5.00	6.00	4.00	4.00
Apr. 6	5.00	6.00	--	5.00	6.00	5.00
13	5.00	4.00	--	4.00	6.00	4.00
20	5.00	4.00	--	4.00	6.00	4.00
27	4.00	4.00	--	4.00	4.00	3.00
May 4	4.00	4.00	--	4.00	4.00	3.00
11	4.00	4.00	--	4.00	4.00	3.00
18	3.00	3.00	--	--	3.00	3.00
25	3.00	3.00	--	--	3.00	3.00
Jun 1	--	--	--	--	--	--
8	--	--	--	--	--	--
15	--	--	--	--	--	--
22	--	--	--	--	--	--

PARSLEY: United States Total Recorded
Shipments. Florida FOB Shipping Point Prices.
1986-87 Crop Year.

WEEK ENDING	Shipments					Monday Date	FOB Prices	
	Florida	California Arizona	Texas	Mexico	Total		Plain	Curly
----1,000 package units or 21,000 lbs----								
Oct. 4	0	0	0	0	0			
Oct. 11	0	0	0	0	0			
Oct. 18	0	0	0	0	0			
Oct. 25	0	0	0	0	0	Oct. 20	--	--
Nov. 1	3	1	0	0	4	Oct. 27	--	--
Nov. 8	6	0	0	0	6	Nov. 3	6.00	7.00
Nov. 15	14	3	1	0	18	Nov. 10	6.00	7.00
Nov. 22	24	6	2	1	33	Nov. 17	6.00	7.00
Nov. 29	15	8	4	3	30	Nov. 24	6.00	7.00
Dec. 6	16	10	8	2	36	Dec. 1	7.00	7.00
Dec. 13	19	14	11	6	50	Dec. 8	7.00	7.00
Dec. 20	22	13	8	7	50	Dec. 15	6.50-7.00	7.00
Dec. 27	16	11	2	3	32	Dec. 22	7.00	7.00
Jan. 3	16	11	1	5	33	Dec. 29	7.00	7.00
Jan. 10	18	8	8	6	40	Jan. 5	7.00	7.00
Jan. 17	12	7	7	2	28	Jan. 12	6.00	6.00
Jan. 24	11	7	7	7	32	Jan. 19	6.00	6.00
Jan. 31	14	8	7	5	34	Jan. 26	5.00	5.00
Feb. 7	17	8	6	6	37	Feb. 2	5.00	5.00
Feb. 14	19	11	4	7	41	Feb. 9	5.00	5.00
Feb. 21	18	8	8	7	41	Feb. 16	5.00	5.00
Feb. 28	12	7	7	5	31	Feb. 23	5.00	5.00
Mar. 7	16	8	9	6	39	Mar. 2	5.00	5.00
Mar. 14	20	6	5	5	36	Mar. 9	5.00	5.00
Mar. 21	17	7	8	5	37	Mar. 16	5.00	5.00
Mar. 28	16	4	10	5	35	Mar. 23	5.00	5.00
Apr. 4	17	5	16	5	43	Mar. 30	4.00-5.00	4.00-5.00
Apr. 11	22	2	16	4	44	Apr. 6	5.00	5.00
Apr. 18	18	1	6	5	30	Apr. 13	5.00	5.00
Apr. 25	15	0	6	4	25	Apr. 20	7.00	8.00
May 2	16	0	3	0	19	Apr. 27	6.00	6.00
May 9	8	0	3	0	11	May 4	4.00	4.00
May 16	9	0	2	0	11	May 11	4.00-6.00	4.00
May 23	10	3	1	1	15	May 18	8.00	6.00
May 30	6	1	0	0	7	May 25	8.00	6.00
Jun. 6	2	0	0	0	2	Jun. 1	--	--
Jun. 13	1	1	1	0	3	Jun. 8	--	--
Jun. 20	0	0	0	0	0	Jun. 15	--	--
Jun. 27	0	0	0	0	0	Jun. 22	--	--
TOTAL	465	179	177	112	933			

PEPPERS (BELL): United States Total Recorded Shipments. 1986-87 Crop Year.

WEEK ENDING	Shipments					Total 1/
	Florida	California	Texas	Mexico		
----1,000 package units or 28,000 lbs----						
Oct. 4	1	390	29	7		427
Oct. 11	16	427	0	11		454
Oct. 18	56	351	4	10		421
Oct. 25	70	316	18	16		420
Nov. 1	84	250	106	14		454
Nov. 8	152	245	195	14		606
Nov. 15	214	112	200	11		537
Nov. 22	327	49	190	26		592
Nov. 29	268	11	60	39		378
Dec. 6	431	7	88	84		610
Dec. 13	384	0	75	173		632
Dec. 20	401	0	73	206		680
Dec. 27	229	0	53	165		447
Jan. 3	294	0	38	229		561
Jan. 10	306	0	97	494		897
Jan. 17	219	0	38	551		808
Jan. 24	175	0	8	494		677
Jan. 31	176	0	7	384		567
Feb. 7	256	0	2	303		561
Feb. 14	261	0	1	532		794
Feb. 21	196	0	0	504		700
Feb. 28	217	0	0	464		681
Mar. 7	246	0	0	504		750
Mar. 14	244	0	0	389		633
Mar. 21	254	0	0	399		653
Mar. 28	231	0	0	310		541
Apr. 4	274	0	0	218		492
Apr. 11	284	0	0	274		558
Apr. 18	314	0	0	251		565
Apr. 25	369	0	0	131		500
May 2	406	24	0	66		496
May 9	381	0	0	56		437
May 16	511	56	0	54		621
May 23	415	72	12	29		528
May 30	282	30	76	18		406
Jun. 6	240	37	118	15		410
Jun. 13	162	92	105	19		398
Jun. 20	88	239	45	7		487
Jun. 27	48	237	0	10		553
TOTAL	<u>9,482</u>	<u>2,945</u>	<u>1,638</u>	<u>7,481</u>		<u>21,932</u>

1/ Total includes shipments from Georgia and North Carolina.

PEPPERS: Florida and West Mexico, Wonder Type, Large, FOB Shipping
 Point Prices for Monday Compared with Chicago and New York City
 Wholesale Prices, 1986-87 Crop Year.

Monday's Date	Monday's Prices			Monday's Prices	
	Florida	Pompano Market	West Mexico FOB Nogales	Florida Stock	
				Chicago	New York City
----Dollars per 1 1/9 bushel----					
Oct. 20	10.00	--	--	--	--
27	10.00	--	--	12.00	9.00-10.00
Nov. 3	12.00	12.00	--	15.00-17.00	--
10	12.00	12.00	--	--	15.00-16.00
17	10.00	10.00	--	13.00-14.00	13.00-14.00
24	6.00- 7.00	5.00- 6.00	--	12.00	10.00-12.00
Dec. 1	6.00- 7.00	5.00- 6.00	--	10.00-11.00	9.00-10.00
8	7.00	7.00*	--	10.00-12.00	7.00- 8.00
15	8.00	10.00*	10.00	12.00-13.00	--
22	6.00- 7.00	5.00	8.00	13.00-14.00	9.00-10.00
29	6.00- 7.00	6.00	7.00- 8.00	8.50-10.00	8.00-10.00
Jan. 5	8.00	8.00	8.00-10.00	10.00-11.00	9.00-10.00
12	7.00- 8.00	6.00	6.00	10.00	8.00-10.00
19	6.00	7.00*	5.00- 6.00	9.00-10.00	8.00-10.00
26	7.00	8.00*	6.00	9.00-10.00	8.00-10.00
Feb. 2	5.00- 6.00	--	6.00- 7.00	9.00	7.00- 8.00
9	9.00	10.00*	10.00	9.00-10.00	9.00-10.00
16	8.00	8.00-10.00*	6.00- 7.00	11.00-12.00	8.00
23	8.00	7.00	6.00	10.00	8.00- 9.00
Mar. 2	7.00	7.00- 8.00*	5.00- 6.00	10.00-11.00	7.00
9	6.00- 7.00	7.00- 8.00*	5.00	--	7.00- 8.00
16	9.00-10.00	12.00*	8.00-10.00	10.00-11.00	8.00-10.00
23	--	10.00	12.00	--	11.00-13.00
30	12.00	--	--	13.00-14.00	8.00-10.00
Apr. 6	18.00	18.00	20.00	20.00-21.00	14.00-16.00
13	18.00-20.00	18.00	14.00-16.00	20.00	20.00-22.00
20	14.00	14.00	--	13.00	10.00-12.00
27	10.00	10.00	--	15.00-16.00	13.00-14.00
May 4	18.00	16.00	--	17.00-18.00	14.00-15.00
11	20.00	--	--	25.00-30.00	24.00-25.00
18	16.00	--	--	18.00-20.00	15.00
25	16.00-18.00	--	--	22.00-24.00	18.00-20.00
Jun. 1	30.00	--	--	40.00	35.00
8	28.00-30.00	--	--	40.00	35.00-36.00
15	18.00-23.00	--	--	25.00	25.00
22	8.00- 9.00	--	--	--	14.00-16.00

*Extra-Large

PEPPERS (OTHER): United States Total Recorded Shipments. 1986-87 Crop Year.

WEEK ENDING	Shipments					Total 1/
	Florida	California	Texas	Mexico		
----1,000 package units or 18,000 lbs----						
Oct. 4	1	2	2	35	40	
Oct. 11	3	2	0	25	30	
Oct. 18	8	2	0	29	39	
Oct. 25	6	2	0	28	36	
Nov. 1	13	1	4	51	69	
Nov. 8	21	1	3	52	77	
Nov. 15	32	0	4	61	97	
Nov. 22	42	0	4	48	94	
Nov. 29	34	0	2	35	71	
Dec. 6	25	0	6	37	68	
Dec. 13	35	0	4	56	95	
Dec. 20	46	0	2	69	117	
Dec. 27	33	0	3	35	71	
Jan. 3	52	0	1	40	93	
Jan. 10	53	0	2	70	125	
Jan. 17	36	0	1	96	133	
Jan. 24	16	0	1	69	86	
Jan. 31	31	0	2	63	96	
Feb. 7	14	0	0	36	50	
Feb. 14	21	0	1	62	84	
Feb. 21	25	0	0	64	89	
Feb. 28	18	0	0	70	88	
Mar. 7	27	0	0	70	97	
Mar. 14	28	0	0	65	93	
Mar. 21	38	0	0	72	110	
Mar. 28	35	0	0	55	90	
Apr. 4	36	0	0	68	104	
Apr. 11	34	0	0	66	100	
Apr. 18	33	0	0	77	110	
Apr. 25	38	0	0	60	98	
May 2	52	0	0	51	103	
May 9	31	0	0	76	107	
May 16	31	0	0	72	103	
May 23	27	0	1	54	82	
May 30	27	0	1	50	78	
Jun. 6	19	0	1	50	70	
Jun. 13	19	0	2	56	77	
Jun. 20	22	1	0	38	67	
Jun. 27	2	6	0	26	47	
TOTAL	1,064	17	47	2,137	3,284	

1/ Total includes shipments from North Carolina.

PEPPERS, OTHER: Florida FOB Shipping Point Prices for Monday
1986-87 Crop Year.

Monday's Date	Cuban type 1-1/9 bushel Large	Longhots bushel	Fingerhots Bushel or 1-1/9 bushel	Hungarian Wax 1/2 or 5/9 bushel	Jalapeno 1/2 or 5/9 bushel
Oct. 20	--	--	--	--	--
27	--	--	--	--	--
Nov. 3	12.00-15.00	7.00	--	6.00	--
10	--	5.00- 7.00	--	--	--
17	10.00	4.00- 5.00	--	4.00- 5.00	8.00
24	8.00	4.00	--	4.00	6.00
Dec. 1	--	3.00- 4.00	--	3.00- 4.00	--
8	--	4.00	--	--	--
15	--	3.00- 4.00	4.00- 5.00	--	4.00- 5.00
22	8.00	4.00	4.00- 6.00	5.00	--
29	6.00	5.00	--	5.00	4.00- 5.00
Jan. 5	6.00- 8.00	5.00- 6.00	6.00- 7.00	5.00	4.00
12	6.00- 7.00	5.00	8.00	--	4.00- 6.00
19	--	--	--	--	--
26	10.00	10.00	--	--	--
Feb. 2	--	10.00	--	10.00	--
9	--	--	--	--	--
16	--	15.00-16.00	12.00-15.00	10.00-12.00	--
23	--	--	--	--	--
Mar. 2	--	14.00-16.00	--	--	--
9	--	--	--	--	--
16	--	14.00	--	--	--
23	--	--	--	--	--
30	--	--	--	--	--
Apr. 6	--	12.00-14.00	--	10.00-12.00	--
13	--	10.00-12.00	10.00-12.00	8.00-10.00	--
20	15.00	10.00-12.00	10.00-12.00	8.00	--
27	--	--	--	10.00	--
May 4	--	--	--	--	--
11	--	--	--	--	--
18	--	--	--	--	--
25	--	--	--	--	--
Jun. 1	--	--	--	--	--
8	--	--	--	--	--
15	--	--	--	--	--
22	--	--	--	--	--

POTATOES, NEW: United States Total Recorded Shipments, 1986-87 Crop Year.

WEEK ENDING	Shipments							
	Arizona		California		Florida			
	Rail	Truck	Rail	Truck	Rail	Truck		
----1,000 cwt----								
Jan. 24	0	0	4	103	0	0		
Jan. 31	0	0	5	105	0	4		
Feb. 7	0	0	4	99	0	14		
Feb. 14	0	0	4	94	0	18		
Feb. 21	0	0	1	90	0	37		
Feb. 28	0	0	3	406	0	42		
Mar. 7	0	0	3	114	0	81		
Mar. 14	0	0	1	97	0	92		
Mar. 21	0	0	0	82	0	85		
Mar. 28	0	0	0	92	4	74		
Apr. 4	0	0	4	102	3	121		
Apr. 11	0	0	1	64	4	171		
Apr. 18	0	0	2	60	9	174		
Apr. 25	3	15	5	88	6	199		
May 2	6	24	20	98	3	278		
May 9	13	51	147	288	59	635		
May 16	18	73	212	415	48	701		
May 23	23	130	271	344	42	658		
May 30	23	96	229	298	47	593		
Jun. 6	24	113	278	375	45	568		
Jun. 13	20	145	354	428	16	330		
Jun. 20	22	151	342	453	0	37		
Jun. 27	0	111	325	457	0	7		
TOTAL	152	909	2,215	4,752	286	4,919		

WEEK ENDING	Shipments							
	North Carolina		Texas		Totals			
	Rail	Truck	Rail	Truck	Rail	Truck		
----1,000 cwt----								
Jan. 24	0	0	0	0	4	103		
Jan. 31	0	0	0	0	5	109		
Feb. 7	0	0	0	0	4	113		
Feb. 14	0	0	0	0	4	112		
Feb. 21	0	0	0	0	1	127		
Feb. 28	0	0	0	0	3	448		
Mar. 7	0	0	0	0	3	195		
Mar. 14	0	0	0	0	1	189		
Mar. 21	0	0	0	0	0	167		
Mar. 28	0	0	0	0	4	166		
Apr. 4	0	0	0	0	7	223		
Apr. 11	0	0	0	0	5	235		
Apr. 18	0	0	0	0	11	234		
Apr. 25	0	0	0	0	14	302		
May 2	0	0	0	38	29	438		
May 9	0	0	0	59	219	1,033		
May 16	0	0	0	93	278	1,282		
May 23	0	0	0	66	336	1,198		
May 30	0	0	0	17	299	1,004		
Jun. 6	0	0	0	5	347	1,061		
Jun. 13	0	11	0	1	390	915		
Jun. 20	0	202	0	0	364	843		
Jun. 27	0	329	0	36	325	940		
TOTAL	0	542	0	315	2,653	11,437		

POTATOES, NEW: Florida FOB Shipping Point Prices for Monday Compared with Wholesale Prices in Atlanta, Chicago, New York City and Philadelphia. 1987 Crop Year.

RED TYPE

Monday's Date	Monday's Price		Monday's Price			
	South Florida	Hastings	Atlanta	Chicago	New York City	Philadelphia
	US#1A	US#1A	US#1A	US#1A	US#1A	US#1A
	----Dollars per 50 lb sacks----					
Jan. 26	--	--	--	--	--	--
Feb. 2	--	--	--	--	--	--
9	--	--	--	--	--	--
16	--	--	--	--	--	--
23	10.00	--	--	15.00	13.00	--
Mar. 2	--	--	--	15.00	12.00-13.00	12.50
9	9.00	--	10.50-11.00	13.00-14.00	12.00-13.50	12.00
16	9.00	--	10.50-11.00	12.00-14.00	12.00-13.00	12.00
23	9.00	--	10.00-11.00	12.00-14.00	12.00-13.00	12.00
30	10.00	--	10.50-11.00	11.00-12.00	11.00-13.00	--
Apr. 6	11.00	--	11.50	13.00-14.00	12.00-14.00	14.00
13	13.00	--	13.50	13.00-15.00	15.00-16.00	14.00
20	20.00	--	16.00-16.50	15.00-16.00	13.00-14.00	--
27	--	--	18.50	18.00-19.00	18.00-19.00	18.50
May 4	--	--	18.50	18.00-19.00	18.00-19.00	18.50
11	--	15.00	18.50	18.00-19.00	--	20.00
18	--	12.00	14.00-15.00	18.00-18.50	--	--
25	--	10.00	--	18.00-19.00	--	--
Jun. 1	--	8.00	11.50-12.00	17.00-18.00	--	--
8	--	7.00- 8.00	9.50-10.00	16.00-17.00	--	12.00
15	--	--	8.75- 9.50	--	--	--
22	--	--	--	10.00-11.00	--	--

ROUND WHITE

Monday's Date	Monday's Price			Monday's Price			
	Hastings		Table Stock	Atlanta	Chicago	New York City	Philadelphia
	Proc Stock	Sebagoes					
	85% US#1	85% US#1	US#1A	US#1A	US#1A	US#1A	US#1A
--Dols cwt--			----Dollars per 50 lb sacks----				
Jan. 26	--	--	--	--	--	--	--
Feb. 2	--	--	--	--	--	--	--
9	--	--	--	--	--	--	--
16	--	--	--	--	--	--	--
23	--	--	--	--	--	--	--
Mar. 2	--	--	--	--	--	--	--
9	--	--	--	--	--	--	--
16	--	--	--	--	--	--	15.00
23	--	--	--	--	--	--	--
30	--	--	--	--	--	--	--
Apr. 6	--	--	--	--	16.00-17.00	--	--
13	--	--	--	--	16.00-17.00	13.00-14.00	--
20	--	--	--	--	15.00-17.00	13.00-14.50	--
27	--	--	--	--	15.00-17.00	--	18.50
May 4	14.00	--	10.00-12.00	--	--	--	--
11	14.00	--	10.00	--	--	15.00	--
18	14.00	--	12.00	12.00-13.50	18.00-18.50	--	--
25	14.00	--	10.00	--	--	--	--
Jun. 1	14.00	--	8.00	11.50-12.00	--	--	11.00-12.00
8	15.50-16.50	--	--	11.50-12.00	--	--	12.00
15	--	--	--	--	--	--	12.00-15.00
22	--	--	--	--	--	--	--

RADISHES: United States Total Recorded Shipments; Florida FOB
Shipping Point Prices for Monday Compared with Wholesale
Prices in New York City. 1986-87 Crop Year.

WEEK ENDING	Shipments					Monday's Date	Reds 30-6 oz bags	
	Florida	Arizona	Calif.	Mexico	Total		Florida FOB Price	New York City Wholesale Market
----1,000 package units or 12,000 lbs----								
Oct. 4	60	0	20	2	82			
Oct. 11	73	0	14	1	88			
Oct. 18	163	2	22	2	189			
Oct. 25	151	7	31	19	208	Oct. 20	5.00	5.50- 6.00
Nov. 1	187	11	38	19	255	Oct. 27	4.50	5.50- 6.00
Nov. 8	172	3	31	39	245	Nov. 3	3.00	5.00
Nov. 15	161	10	67	58	296	Nov. 10	3.00	4.50- 5.00
Nov. 22	163	15	72	91	341	Nov. 17	3.50	4.00- 5.00
Nov. 29	122	7	30	54	213	Nov. 24	4.50	4.00- 5.00
Dec. 6	157	5	41	64	267	Dec. 1	3.50- 4.00	5.00
Dec. 13	166	15	50	91	322	Dec. 8	3.50	3.00- 5.00
Dec. 20	181	17	54	112	364	Dec. 15	3.50	4.50
Dec. 27	158	7	50	71	286	Dec. 22	3.00	4.00
Jan. 3	91	6	29	70	196	Dec. 29	3.50	4.00
Jan. 10	147	9	42	75	273	Jan. 5	5.00	4.00
Jan. 17	150	12	21	71	254	Jan. 12	7.00	7.00- 8.00
Jan. 24	137	8	14	57	216	Jan. 19	7.00	7.00- 8.00
Jan. 31	141	8	19	72	240	Jan. 26	3.00	5.00- 6.00
Feb. 7	144	12	13	75	244	Feb. 2	3.00	3.50- 4.50
Feb. 14	184	7	15	92	298	Feb. 9	2.50	4.00
Feb. 21	163	6	23	88	280	Feb. 16	2.50	4.00
Feb. 28	207	2	24	91	324	Feb. 23	2.00	3.50- 4.00
Mar. 7	178	6	29	105	318	Mar. 2	2.00	3.50- 4.00
Mar. 14	177	9	18	78	282	Mar. 9	2.00	3.00- 4.00
Mar. 21	194	10	38	67	309	Mar. 16	2.50	3.00- 3.50
Mar. 28	167	12	37	79	295	Mar. 23	2.50	3.25- 3.75
Apr. 4	124	6	43	79	252	Mar. 30	2.50	3.00- 4.00
Apr. 11	186	12	58	92	348	Apr. 6	2.50	3.50- 4.00
Apr. 18	239	10	17	47	313	Apr. 13	3.50	4.00- 4.50
Apr. 25	177	7	47	31	262	Apr. 20	3.50	4.00- 4.50
May 2	223	3	57	17	300	Apr. 27	3.00	4.00- 4.50
May 9	200	3	49	6	258	May 4	2.50	3.50- 4.50
May 16	228	3	39	2	272	May 11	2.50	3.00- 3.50
May 23	192	1	19	1	213	May 18	2.00	4.00
May 30	135	1	47	2	185	May 25	2.00	3.50- 4.00
Jun. 6	76	0	38	10	124	Jun. 1	2.50	3.50
Jun. 13	14	0	32	1	47	Jun. 8	--	--
Jun. 20	1	0	37	0	38	Jun. 15	--	--
Jun. 27	0	0	29	2	31	Jun. 22	--	--
TOTAL	5,789	252	1,354	1,933	9,328			

SQUASH: United States Total Recorded
Shipments. 1986-87 Crop Year.

WEEK ENDING	Shipments				Total 1/
	Florida	California	Texas Mexico		
----1,000 package units or 42,000					
Oct. 4	16	0	14	30	
Oct. 11	41	0	10	51	
Oct. 18	68	0	14	82	
Oct. 25	73	0	20	93	
Nov. 1	117	0	37	154	
Nov. 8	103	8	52	155	
Nov. 15	115	54	63	178	
Nov. 22	86	5	90	176	
Nov. 29	80	2	129	209	
Dec. 6	97	0	167	264	
Dec. 13	73	0	177	250	
Dec. 20	67	0	182	249	
Dec. 27	57	0	114	171	
Jan. 3	54	0	130	184	
Jan. 10	48	0	205	253	
Jan. 17	40	0	243	283	
Jan. 24	46	0	195	241	
Jan. 31	46	0	198	244	
Feb. 7	55	0	246	301	
Feb. 14	51	0	313	364	
Feb. 21	61	0	194	255	
Feb. 28	58	0	191	249	
Mar. 7	60	0	218	278	
Mar. 14	55	4	195	250	
Mar. 21	91	2	190	281	
Mar. 28	121	7	132	253	
Apr. 4	97	15	110	207	
Apr. 11	70	23	122	192	
Apr. 18	106	27	108	214	
Apr. 25	139	22	100	239	
May 2	120	11	101	221	
May 9	120	8	100	220	
May 16	116	4	68	185	
May 23	80	0	57	138	
May 30	63	0	47	110	
Jun. 6	35	0	22	57	
Jun. 13	13	0	21	34	
Jun. 20	7	0	15	22	
Jun. 27	4	0	11	15	
TOTAL	2,749	192	4,601	7,352	

1/ Total Truck shipments include small quantity from Arizona and North Carolina.

SQUASH: Florida and West Mexico FOB Shipping Point
Prices for Monday, 1986-87 Crop Year.

Monday's Date	Acorn	Yellow Crookneck	Yellow Straightneck	Zucchini		
	Florida Medium	Florida Small	Pompano Market Small	Florida Small	Pompano Market Small	West Mexico FOB Nogales Small
	BusheIs	3/4 bushels	----Containers----		5/9 bushel crates	5/9 bushel crates
Oct. 20	--	8.00	--	8.00-10.00	--	--
27	--	6.00	--	5.00- 6.00	--	--
Nov. 3	--	5.00	6.00	5.00	4.00	--
10	--	8.00	5.00- 6.00	6.00	5.00	--
17	8.00	12.00	--	7.00- 8.00	7.00	--
24	7.00- 8.00	15.00	12.00	12.00	12.00	--
Dec. 1	--	15.00	--	8.00	6.00	--
8	--	15.00	--	6.00	5.00- 6.00	5.00
15	8.00	15.00	8.00	6.00	5.00	6.00
22	10.00	15.00	--	8.00	6.00	6.00
29	10.00	--	--	5.00	5.00	7.00- 8.00
Jan. 5	10.00	15.00	--	12.00	12.00	10.00
12	10.00	15.00	10.00	14.00	14.00	14.00
19	10.00	15.00	10.00	14.00	14.00	14.00-16.00
26	12.00	15.00	--	16.00	16.00	20.00
Feb. 2	12.00	15.00	--	12.00	12.00	14.00-16.00
9	14.00	15.00	--	10.00	10.00	10.00-12.00
16	12.00	15.00	--	10.00	--	8.00
23	--	8.00-10.00	--	5.00- 6.00	5.00	10.00
Mar. 2	--	12.00	--	10.00	10.00	12.00
9	--	14.00	--	10.00-12.00	10.00	8.00-10.00
16	10.00	16.00	8.00	8.00	--	8.00
23	10.00	10.00	12.00	4.00- 5.00	4.00	6.00
30	--	8.00	10.00	5.00	5.00	6.00
Apr. 6	10.00	18.00	--	18.00	20.00	14.00-16.00
13	10.00	22.00	--	15.00	15.00	--
20	10.00	15.00	--	4.00- 5.00	4.00	--
27	10.00	15.00	--	6.00	6.00	--
May 4	10.00-12.00	20.00	8.00	8.00	8.00	--
11	--	20.00	8.00	6.00	5.00	--
18	--	10.00	--	5.00- 6.00	--	--
25	--	6.00- 7.00	--	8.00	--	--
Jun. 1	--	5.00- 6.00	--	5.00	--	--
8	--	--	--	--	--	--
15	--	--	--	--	--	--
22	--	--	--	--	--	--

STRAWBERRIES: United States Total Recorded Shipments
in 1,000 Flats. 1986-87 Crop Year.

WEEK ENDING	Shipments			
	Florida	California	Mexico	Total
----1,000 12-1 pint flats---				
Oct. 4	0	0	0	0
Oct. 11	0	0	0	0
Oct. 18	0	0	0	0
Oct. 25	0	0	0	0
Nov. 1	0	0	0	0
Nov. 8	0	75	17	92
Nov. 15	0	82	41	123
Nov. 22	0	78	40	118
Nov. 29	1	48	22	71
Dec. 6	8	39	19	66
Dec. 13	25	21	12	58
Dec. 20	64	9	15	88
Dec. 27	86	3	9	98
Jan. 3	108	6	20	134
Jan. 10	84	20	27	131
Jan. 17	107	68	37	212
Jan. 24	132	107	31	270
Jan. 31	52	292	58	402
Feb. 7	66	299	32	397
Feb. 14	40	315	66	421
Feb. 21	21	128	48	197
Feb. 28	16	151	66	233
Mar. 7	32	422	83	537
Mar. 14	217	566	73	856
Mar. 21	537	615	95	1,247
Mar. 28	663	857	127	1,647
Apr. 4	227	1,634	174	2,035
Apr. 11	379	2,893	226	3,498
Apr. 18	340	4,062	182	4,584
Apr. 25	140	2,835	147	3,122
May 2	42	3,689	120	3,851
May 9	47	3,503	95	3,645
May 16	37	3,106	53	3,196
May 23	19	2,446	63	2,528
May 30	12	2,235	62	2,309
Jun. 6	5	2,214	66	2,285
Jun. 13	1	1,713	50	1,764
Jun. 20	0	1,267	33	1,300
Jun. 27	0	1,174	29	1,203
TOTAL	3,508	36,972	2,238	42,718

STRAWBERRIES: Florida and California FOB Shipping Point Prices for Monday Compared with Wholesale Prices in Atlanta, Chicago and New York City of Florida Stock. 1986-87 Crop Year.

Monday's Date	Florida	California	Florida Stock		
			Atlanta	Chicago	New York City
	Mon Price	Mon Price	Mon Price	Mon Price	Mon Price
----Dollars 12-1 pint flats Medium-Large size----					
Oct. 20	--	--	--	--	--
25	--	--	--	--	--
Nov. 3	--	--	--	--	--
10	--	--	--	--	--
17	--	--	--	--	--
24	--	--	--	--	--
Dec. 1	16.00	--	--	--	--
8	18.00	--	--	28.00-30.00	21.00-24.00
15	20.00	--	--	25.00-27.00	24.00-30.00
22	15.00-16.00	--	--	20.00-22.00*	27.00-30.00*
29	--	--	16.00	16.00-18.00	--
Jan. 5	12.00	--	15.00-16.00***	15.00-16.00	--
12	12.00***	--	12.50-14.00	15.00-16.00	--
19	10.00	--	12.50-13.50	12.00-14.00	--
26	12.00	12.00	11.50-12.00	12.00-13.00	13.00-15.00
Feb. 2	10.00-12.00***	10.00-12.00	14.00	12.00	--
9	12.00***	12.00-14.00	12.00-13.00***	15.00	--
16	12.00-14.00***	14.00	14.50***	--	--
23	14.00-16.00***	16.00-18.00	17.00	--	18.00-24.00*
Mar. 2	16.00***	18.00-20.00	19.00-22.00***	--	24.00-30.00*
9	10.00	10.00-12.00	17.50	19.00***	12.00
16	6.00- 8.00	10.00	8.00-10.50	9.00-10.00	--
23	6.00- 7.00	9.00-10.00	7.50- 8.00	10.00-11.00	12.00*
30	--	10.00	--	10.00-12.00	6.00- 9.00*
Apr. 6	7.00**	9.00-10.00	8.50- 9.00	11.00-12.00	--
13	3.00- 3.50**	4.00- 5.00	5.00- 6.00	--	--
20	3.00**	4.00	4.50- 5.00***	--	3.00- 3.60*
27	5.00**	4.00- 5.00**	6.00- 7.00***	--	6.00
May 4	5.00**	4.00- 6.00**	7.00- 8.00***	--	--
11	4.00- 4.50**	3.50- 4.50**	7.00***	--	--
18	--	--	--	--	--
25	--	--	--	--	--
Jun. 1	--	--	--	--	--
8	--	--	--	--	--
15	--	--	--	--	--
22	--	--	--	--	--

* Large
 ** Mostly Medium
 *** Medium

TOMATOES: United States Total Recorded
Shipments. 1986-87 Crop Year.

WEEK ENDING	Shipments			
	Florida	California	Mexico	Total 1/
----1,000 package units or 25,000 lbs----				
Oct. 4	0	1,250	382	1,648
Oct. 11	10	1,628	526	2,174
Oct. 18	28	1,598	552	2,178
Oct. 25	227	1,299	460	1,986
Nov. 1	449	1,103	501	2,054
Nov. 8	1,111	828	518	2,459
Nov. 15	1,299	526	514	2,342
Nov. 22	1,235	318	492	2,062
Nov. 29	1,430	177	597	2,237
Dec. 6	1,909	97	339	2,375
Dec. 13	2,248	99	333	2,726
Dec. 20	2,336	52	246	2,647
Dec. 27	1,318	2	185	1,509
Jan. 3	1,241	9	310	1,560
Jan. 10	1,506	28	1,025	2,587
Jan. 17	1,299	0	1,276	2,592
Jan. 24	1,294	0	1,294	2,606
Jan. 31	1,246	0	1,309	2,573
Feb. 7	1,160	0	1,402	2,564
Feb. 14	945	0	1,563	2,508
Feb. 21	802	0	1,588	2,390
Feb. 28	922	0	1,510	2,432
Mar. 7	791	0	1,613	2,404
Mar. 14	575	0	1,823	2,398
Mar. 21	839	0	1,968	2,807
Mar. 28	892	0	1,404	2,296
Apr. 4	1,598	0	1,243	2,841
Apr. 11	1,915	0	1,486	3,401
Apr. 18	1,648	0	1,092	2,740
Apr. 25	1,892	0	965	2,857
May 2	2,614	0	323	2,937
May 9	2,306	0	381	2,687
May 16	2,696	39	470	3,213
May 23	2,977	139	474	3,628
May 30	2,190	180	301	2,735
Jun. 6	2,057	227	235	2,599
Jun. 13	1,866	349	366	2,727
Jun. 20	1,024	677	318	2,746
Jun. 27	626	895	358	2,863
TOTAL	52,521	11,520	31,742	98,088

1/ Total includes Georgia, North Carolina, South Carolina and Texas.

TOMATOES: Florida and Mexico FOB Shipping Point
Prices for Monday. 1986-87 Crop Year.

Monday's Date	Fla. Mature Green 85% or more US #1 Quality			West Mexico Mature Greens 85% or more U.S.#1 quality		Breakers and Riper 2-layer
	5x6's	6x6's	6x7's	Extra-Large	5x6's	
	25 lbs	25 lbs	25 lbs	25 lbs		20 lbs
Oct. 20	13.00	12.00	9.00	--	--	--
27	--	--	--	--	--	--
Nov. 3	11.00-12.00	10.00-11.00	7.00- 8.00	--	--	--
10	12.00	11.00	8.00	--	--	--
17	14.00	13.00	10.00	--	--	--
24	16.00-17.00	15.00	10.00	--	--	--
Dec. 1	12.00	8.00	4.00	--	--	--
8	8.00	5.00- 6.00	4.00- 5.00	--	--	--
15	6.00	5.00	4.00	--	--	--
22	4.00- 5.00	3.50- 4.00	3.50- 4.00	--	--	--
29	6.00	5.00	5.00	--	--	--
Jan. 5	8.00	7.00- 7.50	7.00- 7.50	--	--	--
12	9.00-10.00	8.00- 9.00	8.00	7.00- 8.00	5.00	5.00
19	9.00-10.00	8.00- 9.00	8.00	7.00- 8.00	5.00- 6.00	6.00
26	--	--	--	--	--	5.00
Feb. 2	6.00- 7.00	4.00- 5.00	3.50- 4.00	--	3.00	3.00
9	9.00	6.00	4.50- 5.00	6.00	3.00	3.00
16	10.00-11.00	6.00- 7.00	4.50- 5.00	7.00	3.00	3.00
23	8.00	5.00	3.50	6.00	2.00- 2.50	2.50
Mar. 2	--	--	--	--	2.00	2.00
9	--	--	--	--	5.00- 7.00	7.00
16	9.00	8.00	5.00	--	3.00	3.00
23	--	--	--	--	--	--
30	10.00	8.00	5.00	--	6.00	6.00
Apr. 6	9.00	8.00	5.00	--	7.00	7.00
13	9.00	7.00- 8.00	5.00	--	3.00	3.00
20	11.00	9.00	6.00	--	3.00	3.00
27	7.00	5.00	4.00	--	4.00	4.00
May 4	8.00	6.00	5.00	--	--	--
11	9.00	8.00	6.00	--	6.00	6.00
18	9.00	8.00	6.00	--	--	--
25	10.00	8.00	5.00	--	7.00	7.00
Jun. 1	12.00	9.00	5.00	--	--	--
8	--	--	--	--	--	--
15	12.00	8.00	6.00	--	--	--
22	9.00	6.00- 7.00	6.00- 7.00	--	--	--

CHERRY TOMATOES: United States Total Recorded
Shipments. Florida FOB Shipping Point Prices.
1986-87 Crop Year

WEEK ENDING	Shipments				Monday 's Date	Florida FOB Price 12-1 pint flats
	Florida	California	Mexico	Total 1/		
----1,000 package units or 15,000 lbs----						
Oct. 4	1	23	16	40		
Oct. 11	7	29	11	47		
Oct. 18	32	44	20	96		
Oct. 25	45	31	55	131	Oct. 20	10.00
Nov. 1	69	19	81	169	Oct. 27	7.00- 8.00
Nov. 8	101	16	79	196	Nov. 3	4.00
Nov. 15	112	8	104	225	Nov. 10	3.00- 3.50
Nov. 22	91	1	134	226	Nov. 17	4.00
Nov. 29	81	0	133	214	Nov. 24	6.00
Dec. 6	99	0	167	267	Dec. 1	4.00
Dec. 13	85	0	177	263	Dec. 8	4.00
Dec. 20	56	0	193	249	Dec. 15	3.00- 4.00
Dec. 27	31	0	215	246	Dec. 22	5.00- 6.00
Jan. 3	23	0	225	248	Dec. 29	7.00
Jan. 10	15	0	293	308	Jan. 5	8.00
Jan. 17	23	0	255	278	Jan. 12	6.00
Jan. 24	18	0	201	219	Jan. 19	4.00- 5.00
Jan. 31	29	0	206	235	Jan. 26	5.00- 6.00
Feb. 7	26	0	183	209	Feb. 2	4.00- 5.00
Feb. 14	20	0	197	217	Feb. 9	6.00
Feb. 21	15	0	192	207	Feb. 16	7.00
Feb. 28	22	0	162	184	Feb. 23	7.00
Mar. 7	18	0	191	209	Mar. 2	7.00- 8.00
Mar. 14	15	0	164	179	Mar. 9	9.00-10.00
Mar. 21	11	0	160	171	Mar. 16	6.00- 8.00
Mar. 28	19	0	133	152	Mar. 23	12.00
Apr. 4	25	0	161	186	Mar. 30	12.00
Apr. 11	30	0	210	240	Apr. 6	14.00
Apr. 18	31	0	191	222	Apr. 13	10.00
Apr. 25	45	0	182	227	Apr. 20	7.00- 8.00
May 2	57	0	110	167	Apr. 27	5.00
May 9	59	0	152	211	May 4	8.00
May 16	76	0	158	234	May 11	12.00
May 23	105	0	149	254	May 18	8.00-10.00
May 30	82	0	120	203	May 25	6.00
Jun. 6	127	0	83	210	Jun. 1	6.00- 7.00
Jun. 13	124	0	59	183	Jun. 8	5.00
Jun. 20	97	0	49	146	Jun. 15	6.00- 7.00
Jun. 27	65	0	51	116	Jun. 22	5.00
TOTAL	<u>1,987</u>	<u>171</u>	<u>5,622</u>	<u>7,784</u>		

1/ Total includes shipments from Texas.

Lake Okeechobee Vegetable Shipments, by Weeks
1986-87 Crop Year.

Week Ending	Cabbage	Celery <u>1/</u>	Chinese Cabbage <u>1/</u>	Corn	
	Crts 1,000	Crts 1,000	14 1/2 crts 1,000	Yellow Crts 1,000	White Crts 1,000
Oct. 25	--	--	--	--	9
Nov. 1	--	--	--	15	--
8	--	16	1	77	8
15	--	29	1	126	19
22	--	63	3	158	29
29	9	46	2	84	20
Dec. 6	9	63	7	117	18
13	13	97	7	81	21
20	9	119	6	80	35
27	2	62	3	26	5
Jan. 3	12	115	7	89	22
10	30	138	10	82	12
17	34	102	8	34	11
24	15	111	6	37	9
31	26	112	8	39	6
Feb. 7	26	147	7	41	8
14	32	135	11	29	5
21	30	130	7	47	4
28	34	144	7	53	11
Mar. 7	35	144	9	68	15
14	48	142	9	48	10
21	32	138	8	58	9
28	24	140	6	79	21
Apr. 4	26	158	8	162	23
11	40	171	8	169	4
18	31	130	7	315	35
25	29	132	5	405	71
May 2	21	129	1	569	102
9	2	162	--	624	129
16	--	139	--	705	162
23	--	114	--	451	114
30	--	123	--	342	43
June 6	--	111	--	236	122
13	--	15	--	117	16
20	--	--	--	78	49
TOTAL	569	3,577	162	5,641	1,177

1/ Includes Exports to Europe

Lake Okeechobee Vegetable Shipments, by Weeks
1986-87 Crop Year.

Week Ending	Endive	Escarole	Lettuce					
			Bibb	Boston	Leaf	Iceberg	Romaine	
			1 1/9 bu 1,000	1 1/9 bu 1,000	Ctns 1,000	Ctns 1,000	4/5 bu 1,000	Ctns 1,000
Oct. 25	--	--	--	--	--	--	--	--
Nov. 1	3	3	1	1	--	--	3	
8	8	8	--	2	--	--	5	
15	15	15	2	3	2	--	11	
22	21	22	5	7	4	--	15	
29	12	14	2	5	2	2	8	
Dec. 6	18	18	4	8	3	19	11	
13	30	25	6	13	4	36	19	
20	29	27	7	12	4	30	15	
27	9	6	2	5	2	17	5	
Jan. 3	25	23	6	11	5	62	16	
10	27	30	5	14	4	40	16	
17	24	28	4	10	3	56	14	
24	27	27	4	11	4	77	19	
31	23	24	4	11	4	76	16	
Feb. 7	26	28	3	13	4	97	15	
14	27	27	4	12	4	80	17	
21	28	25	4	11	4	76	21	
28	25	25	4	11	4	74	26	
Mar. 7	24	25	5	16	6	96	24	
14	23	26	5	18	7	49	22	
21	25	27	4	18	4	95	19	
28	25	27	3	14	7	98	15	
Apr. 4	31	33	3	14	6	81	16	
11	29	29	3	10	5	90	12	
18	22	22	3	9	4	69	10	
25	17	16	3	6	1	86	7	
May 2	13	13	1	2	--	120	4	
9	6	6	--	1	1	94	4	
16	3	3	--	--	--	27	--	
23	2	3	--	--	--	--	--	
30	--	--	--	--	--	--	--	
June 6	--	--	--	--	--	--	--	
13	--	--	--	--	--	--	--	
20	--	--	--	--	--	--	--	
TOTAL	597	605	97	268	98	1,647	385	

Lake Okeechobee Vegetable Shipments, by Weeks
1986-87 Crop Year.

Week Ending	Parsley	Radishes	Misc Vegetables
	Crts 1,000	30-6 oz 1,000	Pkgs 1,000
Oct. 25	--	136	1
Nov. 1	--	157	4
8	4	151	6
15	6	153	10
22	14	171	10
29	12	120	8
Dec. 6	13	162	14
13	19	185	12
20	20	189	14
27	6	143	5
Jan. 3	16	101	14
10	16	163	10
17	12	165	9
24	14	140	13
31	11	134	11
Feb. 7	13	157	12
14	14	173	13
21	14	168	16
28	14	211	13
Mar. 7	16	181	23
14	15	192	20
21	14	202	25
28	14	172	16
Apr. 4	20	147	19
11	21	179	24
18	19	246	21
25	15	185	22
May 2	7	217	14
9	6	190	14
16	1	197	10
23	--	164	13
30	--	94	8
June 6	--	41	2
13	--	--	--
20	--	--	--
TOTAL	366	5,386	426

Pompano Beach Area, State
Farmer's Market Shipments,
by Weeks. 1986-87 Crop Year.

Week Ending	Beans		Cucumbers		Eggplant		Peas
	Round Green	Wax	1 1/9 bu 1,000	Ctns 24s 1,000	Regular	Italian Type	Southern
	Bu 1,000	Bu 1,000			Bu 1,000	1/2 bu ctns 1,000	Bu 1,000
Nov. 1	--	--	2	1	12	4	--
8	--	--	9	1	12	3	--
15	--	--	15	3	14	1	--
22	--	--	4	1	12	1	--
29	--	--	18	4	14	2	--
Dec. 6	--	--	9	3	13	2	--
13	4	--	--	--	20	6	--
20	1	--	1	--	17	4	--
27	--	--	--	--	7	3	--
Jan. 3	--	--	1	--	15	2	--
10	--	1	3	--	15	3	--
17	1	1	2	--	15	3	--
24	--	--	3	--	20	4	--
31	1	--	2	--	13	3	--
Feb. 7	--	--	--	--	16	6	--
14	--	--	1	--	18	3	--
21	--	--	3	--	18	2	--
28	--	--	2	--	12	3	--
Mar. 7	1	1	5	--	7	4	--
14	1	1	8	1	13	4	--
21	2	1	35	5	10	4	--
28	2	1	53	2	6	6	--
Apr. 4	1	--	76	13	13	6	--
11	5	--	51	10	25	10	--
18	1	2	33	3	17	5	--
25	2	1	43	4	25	5	--
May 2	1	3	36	7	23	6	--
9	3	1	16	4	16	5	--
16	4	1	8	4	27	8	--
TOTAL	30	14	439	66	445	118	--

Pompano Beach Area, State
Farmer's Market Shipments,
by Weeks. 1986-87 Crop Year.

Week Ending	Peppers					
	California Wonder	Cubanelles	Longhots	Fingerhots	Hungarian Wax	Jalapeno
	1 1/9 bu 1,000	1 1/9 bu 1,000	Bu 1,000	1/2 bu 1,000	1/2 bu 1,000	1/2 bu 1,000
Nov. 1	100	11	6	--	9	1
8	37	2	2	--	2	1
15	50	4	3	1	3	2
22	62	4	1	--	2	1
29	49	1	1	--	1	1
Dec. 6	43	4	1	1	2	1
13	73	4	2	1	2	3
20	54	3	2	1	2	2
27	22	2	1	--	1	--
Jan. 3	44	2	1	1	4	1
10	49	3	2	2	4	1
17	30	2	1	1	3	2
24	26	3	2	1	3	2
31	36	3	2	1	3	1
Feb. 7	49	3	2	1	2	1
14	55	6	--	1	--	2
21	49	3	2	1	2	1
28	51	2	1	--	1	1
Mar. 7	59	3	1	--	--	1
14	52	3	2	--	1	1
21	46	2	1	--	3	1
28	45	2	1	--	3	2
Apr. 4	53	1	1	1	3	1
11	58	3	4	2	2	3
18	30	3	1	1	1	1
25	42	1	1	--	6	1
May 2	33	2	1	--	2	2
9	20	1	--	1	2	--
16	17	1	1	--	2	1
TOTAL	1,334	84	46	18	71	38

Pompano Beach Area, State
Farmer's Market Shipments,
by Weeks. 1986-87 Crop Year.

Week Ending	Squash					Tomatoes	
	Yellow Straightneck	Zucchini	White	Acorn	Butternut	Regular Type	Cherry
	1/2 bu 1,000	1/2 bu 1,000	1/2 bu 1,000	1 1/9 bu 1,000	1 1/9 bu 1,000	Ctns 1,000	12 pint flats 1,000
Nov. 1	10	22	--	--	--	--	--
8	3	8	--	1	2	--	--
15	1	3	--	1	1	--	--
22	1	2	--	--	--	--	--
29	14	3	--	1	1	--	--
Dec. 6	4	4	--	1	2	--	--
13	4	16	--	2	2	--	--
20	5	14	--	1	1	--	--
27	--	9	--	--	1	--	--
Jan. 3	2	1	--	2	2	--	--
10	3	7	--	2	2	--	--
17	2	6	--	2	1	--	--
24	2	5	--	1	1	--	--
31	1	5	--	1	2	--	9
Feb. 7	--	3	--	1	1	--	--
14	--	4	--	1	2	--	1
21	--	6	--	1	2	--	4
28	--	5	--	--	1	--	3
Mar. 7	1	8	--	3	1	--	4
14	--	9	--	2	3	--	5
21	2	14	--	2	2	--	5
28	2	13	--	1	1	--	1
Apr. 4	3	11	--	4	--	--	6
11	1	14	--	3	--	--	6
18	1	10	--	3	--	--	1
25	2	11	--	4	--	--	14
May 2	3	6	--	4	--	--	3
9	1	9	--	4	--	--	5
16	3	7	--	2	1	--	--
TOTAL	71	235	--	50	32	--	67

IMPORTS INTO SOUTH FLORIDA
SOLD FLORIDA F.O.B. SHIPPING POINT BASIS

CANTALOUPS

Prices below include imports from the Caribbean Basin countries of Costa Rica, Dominican Republic, El Salvador, Guatemala, Honduras, Jamaica and Panama.

CANTALOUPS
1/2 CARTONS AND CRATES
Weekly Price Range

Week Beginning	9s	12s	15s	18s	23s
Jan. 12	10.00-12.00	12.00-16.00	15.00-18.00	15.00-18.00	13.00-15.00
19	10.00-12.00	12.00-14.00	14.00-16.00	14.00-16.00	12.00-14.00
26	9.00-12.00	10.00-13.00	12.00-15.00	12.00-15.00	10.00-14.00
Feb. 2	11.00-13.00	13.00-17.00	14.00-18.00	14.00-18.00	12.00-14.00
9	12.00-14.00	14.00-16.00	17.00-20.00	17.00-20.00	13.00-16.00
16	--	16.00-18.00	18.00-20.00	18.00-20.00	14.00-16.00
23	--	17.00-18.00	20.00	18.00-20.00	14.00-16.00
Mar. 2	--	14.00-16.00	16.00-20.00	16.00-20.00	12.00-18.00
9	--	14.00-17.00	15.00-18.00	15.00-18.00	12.00-14.00
16	--	13.00-16.00	14.00-18.00	14.00-18.00	9.00-13.00
23	9.00-11.00	14.00-16.00	16.00-18.00	14.00-18.00	9.00-14.00
30	10.00-11.00	12.00-15.00	16.00-18.00	16.00-18.00	12.00
Apr. 6	10.00-11.00	14.00	16.00	16.00	--
13	10.00-12.00	12.00-16.00	15.00-16.00	15.00-16.00	12.00-14.00
20	9.00-10.00	12.00-14.00	13.00-16.00	13.00-16.00	12.00
27	9.00-11.00	10.00-13.00	12.00-14.00	12.00-14.00	10.00-12.00

HONEYDEWS

Prices below include imports from the Caribbean Basin countries of Costa Rica, Dominican Republic, El Salvador, Guatemala, Honduras and Panama.

HONEYDEWS
2/3 STANDARD CARTONS
Weekly Price Range

Week Beginning	5s	6s	8s	9s	10s
Jan. 12	7.00-10.00	7.00-10.00	7.00-10.00	7.00- 9.00	--
19	6.00- 8.00	6.00- 8.00	6.00- 8.00	6.00- 7.00	5.00- 6.00
26	5.00- 7.00	5.00- 7.00	5.00- 7.00	5.00- 6.50	4.50- 6.00
Feb. 2	5.00- 6.00	5.00- 6.00	5.00- 6.00	4.00- 5.00	4.00- 4.50
9	4.00- 5.50	4.00- 5.50	4.00- 5.50	3.50- 4.50	3.50- 4.50
16	4.00- 7.00	4.00- 7.00	4.00- 5.50	4.00- 5.00	4.00- 5.00
23	7.00- 9.00	7.00- 9.00	6.50- 8.50	5.00- 7.50	5.00- 7.50
Mar. 2	9.00-12.50	9.00-12.50	8.00-12.50	7.00-10.50	7.00- 8.00
9	12.00	12.00	11.50-12.00	10.00-11.00	--
16	12.00-14.00	12.00-14.00	12.00-14.00	12.00-13.00	11.00-13.00
23	13.00-14.00	13.00-14.00	13.00-14.00	11.50-13.00	11.50-13.00
30	13.00-14.00	13.00-14.00	13.00-14.00	13.00	12.00
Apr. 6	12.00-13.00	12.00-13.00	12.00-13.00	12.00	11.50-12.00
13	8.00-12.00	8.00-12.00	8.00-12.00	7.00-11.00	6.00- 7.00
20	6.00- 8.00	6.00- 8.00	6.00- 8.50	6.00- 7.00	--
27	6.00-10.00	6.00-10.00	6.00-10.00	6.00- 9.00	--

IMPORTS INTO SOUTH FLORIDA
SOLD FLORIDA F.O.B. SHIPPING POINT BASIS

CUCUMBERS

Cucumbers were imported and repacked for shipment mostly in the Pompano Beach area. Antigua, Belize, El Salvador, Guatemala, Haiti, Honduras and Jamaica were the principal countries of origin.

Movement of these imports were included in the shipments of cucumbers from Florida.

CUCUMBERS
1 1/9 BUSHEL CARTONS AND CRATES WAXED
Weekly Price Range

Week Beginning	Medium	Fair Quality	Small	Large	Cartons 24s
Jan. 19	20.00	18.00	--	--	6.00- 7.00
26	14.00-18.00	12.00-16.00	--	--	--
Feb. 2	24.00	22.00	--	--	--
9	26.00-28.00	22.00-24.00	22.00-24.00	--	9.00-10.00
16	18.00-20.00	14.00-18.00	16.00-19.00	12.00-16.00	8.00
23	16.00-18.00	12.00	12.00-16.00	10.00-12.00	--
March 2	14.00-15.00	11.00-12.00	11.00-13.00	7.00-10.00	--

WATERMELONS

Prices below include imports from the Caribbean Basin countries of El Salvador, Guatemala, Honduras and Panama.

LONG GRAYS AND JUBILEES
CARTONS APPROXIMATELY 70-80 LBS., PER LB
Weekly Price Range

Week Beginning	2s	3s	4s
Feb. 9	.12-.17	.12-.17	.12-.16
16	.10-.12	.10-.12	.10-.12
23	.10-.12	.10-.12	.10-.12
Mar. 2	.12-.13	.12-.13	.12-.13
9	.12-.15	.12-.15	.12-.15
16	--	.15	.15
23	--	.15-.18	.15-.18