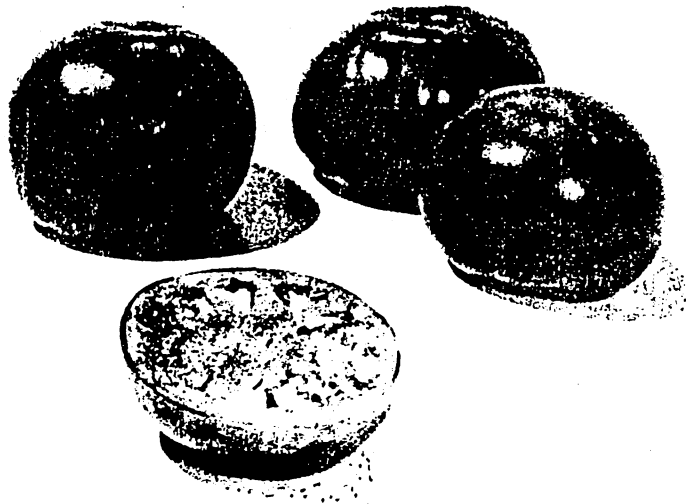


MARKETING CALIFORNIA

TOMATOES



1989

FEDERAL-STATE MARKET NEWS SERVICE

U. S. DEPT. of AGRICULTURE
AGRICULTURAL MARKETING SERVICE
FRUIT & VEGETABLE DIVISION
MARKET NEWS BRANCH

STATE of CALIFORNIA
DEPARTMENT of FOOD & AGRICULTURE
DIVISION of MARKETING SERVICES
MARKET NEWS BRANCH

P R E F A C E

This publication summarizes available data on marketing California fresh market tomatoes for the 1989 season and includes statistical information on shipments, shipping point prices, wholesale market prices, arrival distribution, imports, acreage, production, yields and crop values. These statistical records reflect the marketing conditions that affected the 1989 fresh market tomato crop grown in California. Some information on cherry tomato marketing is also included.

Data were compiled from various printed reports of the Federal-State Market News Service; the USDA's Agricultural Marketing Service, National Agricultural Statistics Board, and the California Agricultural Statistics Service. We wish to acknowledge and thank these agencies for the data and information furnished by them and used to complete this publication.

Price quotations shown in this summary reflect the shipping point and wholesale prices charged by the primary shippers and receivers for the principal packs, varieties, grades and sizes. Prices are for stock of generally good quality and condition. The price ranges are the general ranges of sales as shown in the daily reports. Price quotations reported on occasional small volume sales, sales of fair or poor quality lots, and labels sold at extreme prices were omitted from this summary in order to clearly reflect the general market trends.

This summary was prepared by Melvin A. Ries and Ollie A. Shane in Stockton and includes contributions by Kevin Morris in El Centro, James Valladares in Los Angeles, and Chuck Allen in Fresno.

Additional copies of this summary are available at \$4.00 per copy. Make checks payable to the Department of Food and Agriculture and mail to the following address:

Federal-State Market News Service
1220 N Street, Room 216
P. O. Box 942871
Sacramento, California 94271-0001
Phone: (916) 445-5721

NOTE: Current price and shipment information on fresh market tomatoes is available from the "California Tender Vegetables, Asparagus and Sweet Potatoes Report" issued by the Stockton Market News office. For further information contact:

Federal-State Market News Service
2321 West Washington Street
Stockton, California 95203
Phone: (209) 466-0881

TABLE OF CONTENTS

Table No.	Page No.
Preface	3
1989 Season Summary and Facts at a Glance	5
San Joaquin Valley	5-6
Salinas Valley	6-7
Southern California Desert	7
Southern California and Baja Crossings	7
Chart: California District Shipping Periods for Fresh Market Tomatoes, Calendar Year 1989	8
1. Fresh Market Tomato Shipments, by Origin, by Carrier, by Month, 1989	9
2. California Tomato Shipments, by District, by Carrier, by Month, 1989	10
3. Truck Arrivals of Tomatoes from 23 Major U.S. and 4 Canadian Cities, 1989	11
4. Rail, Rail-Truck and Air Arrivals of Tomatoes in 23 Major U.S. and 4 Canadian Cities, by Origin, 1989	12
5. F.O.B. Shipping Point Prices for Vine Ripe Tomatoes from the San Joaquin Valley, 1989	13
6. F.O.B. Shipping Point Prices for Mature Green Tomatoes from the San Joaquin Valley, Tri-Weekly, 1989	14-15
7. F.O.B. Shipping Point Prices for Mature Green Tomatoes from the Salinas Valley, Tri-Weekly, 1989	16-17
8. F.O.B. Shipping Point Prices for Roma Tomatoes from the San Joaquin and Salinas Valleys, Tri-Weekly, 1989	18
9. F.O.B. Shipping Point Prices for Vine Ripe Tomatoes from Southern California or Baja Crossings through Otay Mesa, Tri-Weekly, 1989	19-20
10. Indications of Shippers Asking Price for Roma Type Tomatoes from Southern California or Baja Crossings through Otay Mesa, Tri-Weekly, 1989	21
11. Shipping Point Price Trends for Tomatoes from the Imperial-Palo Verde Valleys, Tri-Weekly, 1989	22
12. Wholesale Market Prices for California Origin Tomatoes at Los Angeles, Weekly, 1989	22
13. Wholesale Market Prices for California Origin Tomatoes at San Francisco, Weekly, 1989	23
14. Retail Prices for Tomatoes in the Sacramento and San Francisco Bay Area, Major Chain Stores, 1989	24
15. Tomatoes for Fresh Market, Planted and Harvested Acreage, by State, 1987-1989	25
16. Tomatoes for Fresh Market, Yield and Production, by State, 1987-1989	25
17. Tomatoes for Fresh Market, Average Price and Crop Value, by State, 1987-1989	26
18. Harvested Acreage of California Fresh Market Tomatoes, by Season, by Area, 1987-1989	26
19. Monthly Average F.O.B. Prices Received for California Fresh Market Tomatoes, 1987-1989	27
20. Cherry Tomato Shipments, by State and Imports, by Months, 1989	27
21. Truck Arrivals of Cherry Tomatoes in 23 Major U.S. and 4 Canadian Cities, 1989	28
22. F.O.B. Shipping Point Prices for Cherry Tomatoes from the Central San Joaquin Valley, 1989	29
23. F.O.B. Shipping Point Prices for Cherry Tomatoes from Southern California or Baja Crossing through Otay Mesa, Tri-Weekly 1989	30
24. Wholesale Market Prices for California Origin Cherry Tomatoes in Los Angeles and San Francisco, by Week, 1989	31

MARKETING CALIFORNIA TOMATOES

1989 SEASON

Fresh market shipments increased from all California production districts in 1989. Higher yields resulted in the increased production as harvested acreage was unchanged in most major producing areas with the notable exception of the Imperial Valley.

Average shipping point prices in most months declined from their 1988 levels as available fresh market supplies were significantly higher than in 1988. The exception was during September when unseasonable rains reduced production below normal because shippers were unable to harvest due to wet, muddy fields.

During California's prime summer and early fall shipping point period, June to October, fresh market shipments from California accounted for 73% of the total domestic supply in 1989. Despite the increase in production lower prices brought a sharp drop in the total crop value. The 1989 tomato crop value of \$247,795,000 was 10% below the record 1988 crop value of \$274,721,000.

The increasing interest in information about the Roma type tomato has resulted in some additions to the usual data contained in this annual summary. Fresh market shipment data has been tabulated from the major production areas on Roma tomatoes for the first time and shipping point prices were reported for Romas in the San Joaquin and Salinas Valleys as well as, from Southern and Baja California production areas.

1989 FACTS AT A GLANCE COMPARED WITH 1988

HARVESTED ACREAGE - Acres			
Desert	2,000	vs. 1,100	+ 82%
South Coast	3,800	vs. 3,800	Same
Central Coast	5,800	vs. 5,800	Same
San Joaquin Vly.	26,800	vs. 26,800	Same
Total	38,400	vs. 37,500	+ 2%
AVERAGE YIELD - Hundredweight Per Acre			
	245	vs. 237	+ 10%
TOTAL PRODUCTION - Fresh Market - 1,000 Hundredweight			
	10,368	vs. 9,188	+ 13%
AVERAGE PRICE - Dollars per Hundredweight			
	23.90	vs. 29.90	- 20%
TOTAL CROP VALUE - 1,000 Dollars			
	247,795	vs. 274,721	- 10%

FRESH MARKET SHIPMENTS - 10,000 Pound Units

Imperial Vly.	1,021,200	vs. 872,400	+ 17%
Coachella Vly.	225,200	vs. 279,600	- 19%
So. California	5,013,200	vs. 4,172,400	+ 20%
San Joaquin Vly.	21,088,400	vs. 19,657,600	+ 7%
Salinas Vly.	8,660,400	vs. 8,432,000	+ 3%
Total	36,008,400	vs. 33,414,000	+ 8%

BAJA CALIFORNIA CROSSINGS - 1,000-25 Pound Cartons

11,841,200 vs. 10,974,400 + 8%

MAJOR MARKETS - Arrivals 1,000 25 Pound Cartons

L. A.	3,890,000	vs. 3,947,600	- 1%
S. F.-Oak.	1,550,000	vs. 1,256,400	+ 23%
Chicago	1,265,000	vs. 1,089,600	+ 16%
Dallas	1,104,000	vs. 922,400	+ 20%
Seattle	966,000	vs. 837,200	+ 15%

SAN JOAQUIN VALLEY

Fresh market tomato harvested acreage in 1989 for the San Joaquin Valley was the same level as in 1988. However, total fresh market shipments from the San Joaquin Valley increased 7% to 21,088,400 twenty-five pound carton equivalents. Most of the shipments were by truck. Only 187,200 twenty-five pound carton equivalents were shipped by rail or rail-truck.

Vine Ripes: Vine ripe production declined sharply in 1989 from the 1988 level. Total shipments were only 211,000 twenty-pound lug equivalents in 1989, a decline of 43% from the 1988 level of 371,500 twenty pound lug equivalents. Most commercial production has been in the Central San Joaquin Valley around the Cutler-Orosi District in Northern Tulare County. The first shipments were reported June 6 and continued daily until July 16.

Because of the limited production, 1989 shipping point prices were slightly above the 1988 level. Most vine ripe shipments from the San Joaquin Valley were consolidated in mixed loads along with other fruits and vegetables. Consequently, these shipping point prices were generally above the level of vine ripe prices reported from Southern California.

Mature Green: The first shipments from the San Joaquin Valley gas rooms were reported May 16 while the last shipments were recorded on November 21. The peak shipping month was October when 4,982,000 twenty-five pound carton equivalents were shipped. A secondary peak was recorded in July when 4,583,200 twenty-five pound carton equivalents were shipped from the San Joaquin Valley. While domestic shipments increased in 1989, exports, generally to Canada, recorded a 7% decline from their 1988 level.

Trading was fairly slow to moderate in late May and early June as the initial harvest got underway from fields in the Southern San Joaquin Valley. Heavy supplies from Florida confined local shippers to a few West Coast markets. Trading became active as supplies from Florida started to wind down in mid-June. Shipping point prices were briefly higher until warm weather in late June advanced crop maturity and increased local production to an early seasonal high in early July. Quality was excellent on these early summer shipments as growing conditions were nearly ideal.

By mid-July trading was moderate as a local truck shortage limited out of state movement. Shipping point prices declined in response to the higher truck rates. By the end of July trading was fairly light and prices lowered again as home grown supplies of tomatoes flooded major Eastern and mid-Western markets.

In early August a strike by field workers against Northern San Joaquin Valley packers curtailed the harvest in some fields. Trading improved as available supplies declined. Mild weather at the end of August delayed crop development. Some shippers were packing intermittently as shipments declined to their seasonal lows. Trading was fairly active for the lighter supplies which caused prices to increase.

Favorable growing weather in early September advanced crop development and shipments picked up. By mid-September total shipments were 33% ahead of the 1988 level for the same date. An unseasonable tropical summer rain storm passed over Central California the weekend of September 16-18. The harvest was curtailed due to wet and muddy fields. Shippers could not pack until fields dried out. Shipments fell sharply. The quality was variable and heavy dumping was necessary to cull out the rain damaged fruit.

Shipments and prices started to increase by the end of September, when another tropical

storm hit the area. Rain and cool weather again slowed the harvest. Some shippers were not able to pack due to wet fields. Trading was active for all available supplies and heavy shipments continued from gas rooms. The quality was variable in some fields due to the rain damage.

Harvest activity reached a seasonal peak in early October as weather conditions returned to normal. Shipments reached their seasonal peak in mid-October as trading was active for all available supplies. Prices also reached their highest levels of the season. By the end of October, the harvest started to wind down in some fields or was curtailed as another rain storm passed over the Northern San Joaquin Valley. Trading became slow and prices declined as buyers turned their attention to the increasing new crop supplies from Florida.

Romas: Shipments of Romas were tabulated on their own for the first time in 1989. Roma shipments totaled 446,500 twenty-five pound carton equivalents. The season started in early June and ended in mid-November. F.o.b. shipping point prices were reported from June 7 until October 23.

SALINAS VALLEY

Shipments of fresh market tomatoes from the Salinas Valley totaled 8,660,400 twenty-five pound carton equivalents in 1989, a 3% increase over the 1988 level. The peak shipment months were August and September when 3,853,600 twenty-five pound carton equivalents were shipped by Salinas Valley packers. Shipments from local gas rooms started May 24 and the last tomato shipments of the season were reported on November 30.

Mature Green: Packers in the Salinas Valley harvested mature greens from fields in the Southern San Joaquin Valley during June and July and hauled them to local facilities for gassing and shipment. Shipments reached a peak in mid-July then declined in late July as the harvest in the San Joaquin Valley wound down. Trading was mostly moderate during this period except during the second week in July when some shippers were in between fields which curtailed supplies. Trading was active and shipping point prices were sharply higher during this week but then declined in late July.

In late July and early August shipments declined to the lowest levels of the season as the harvest in the San Joaquin Valley finished and fields in the Salinas Valley were not ready to harvest. Light shipments

continued from gas rooms until all San Joaquin Valley supplies were cleared out. During this period supplies were in too few hands to establish a market. Shipping point price reporting was suspended until the harvest started from the Salinas Valley fields.

After mid-August the harvest from local fields picked up and prices declined to their lowest levels of the season. In early September mild weather slowed crop development. Supplies declined from their peak and trading was mostly moderate until mid-September.

Tropical rain storms swept over the area September 16-18. Harvesting was curtailed. Shippers could not pack until the fields dried out. Supplies were in too few hands to establish a market; shipping point price reporting was suspended until shippers could start packing again. Shipments from gas rooms were already sold. As fields dried out in late September prices for the initial offerings were higher than before the rains.

In late September harvesting was again curtailed by unseasonable summer rains. Trading was active for all available supplies. Quality was variable as fruit was harvested from the wet fields. Shipping point price reporting was again suspended until fields dried out and normal harvest operations could resume. Heavy cullage was necessary from the early October harvest to remove the rain damaged fruit. Prices were higher for the limited supplies of good quality fruit.

After mid-October trading was active and prices rose to their highest levels of the season. Fruit was hauled from the Huron area in the San Joaquin Valley as harvest in local Salinas Valley fields started to wind down. Trading was very active in late October as rains once again curtailed harvest and some shippers finished for the season. Harvest continued in the Huron area which did not get hit by the rains.

Movement declined in early December as most shippers finished for the season. Trading became slow for the light supplies as buyers turned to the new crop from Florida.

Romas: Total Roma shipments from the Salinas Valley in 1989 were 104,800 twenty-five pound carton equivalents. F.o.b. shipping point prices on Romas were reported from June 21 to October 20.

SOUTHERN CALIFORNIA DESERT

Harvested acreage of fresh market tomatoes in the Imperial and Coachella Valleys of Southern California increased to 2,000 acres in 1989, 900 acres above the 1,100 harvested in 1988. Fresh market shipments reached 1,246,400 twenty-five pound carton equivalents, an 8% increase over the 1,152,000 twenty-five pound carton equivalents shipped in 1988.

The first shipments from the Coachella Valley were reported on May 5, while the first shipments from the Imperial Valley were reported on May 9. The last shipments from Imperial Valley were reported June 5, while the last shipments from Coachella Valley were recorded on June 21.

Although no daily f.o.b. shipping point price reports were issued by the Federal-State Market News Service office in El Centro, California the weekly price trend report from the desert area on tomatoes showed that prices for the mature greens were significantly above the levels recorded during the 1988 season.

SOUTHERN CALIFORNIA AND BAJA CROSSINGS

Harvested acreage on the south coast was estimated at 3,800 acres, the same as 1988. The first south coast shipments were reported June 6 and continued until January 12. A total of approximately 5,860,000 twenty pound flats were shipped during the 1989 season. October and November were the peak shipping months with 1,502,900 and 984,800 twenty pound flats shipped.

Baja crossings increased to approximately 14,801,500 twenty pound flats for the calendar year 1989. Crossings peaked in July and October when 2,488,000 and 2,959,500 twenty pound flats were imported from Baja California, Mexico.

F.o.b. shipping point prices were reported from June 14 through December 22 by the Federal-State Market News Service office in Los Angeles. Prices were reported on breakers-light red vine ripe tomatoes packed in two layer flats including 4x4s, 4x5s, 5x5s and 5x6s. Three layer lugs included 6x6s and 6x7s. The lowest prices of the season were reported during August and September with flats at \$3.00 and lugs at \$4.00. The highest prices were recorded during December with flats at \$12.00-14.00 and lugs at \$12.00.

CALIFORNIA DISTRICT SHIPPING PERIODS FOR FRESH MARKET TOMATOES, CALENDAR YEAR 1989

SHIPPING PERIODS	Jan. : Feb. : Mar. : Apr. : May : June : July : Aug. : Sept. : Oct. : Nov. : Dec.												SHIPMENTS 10,000 POUND UNITS	SHARE OF TOTAL PERCENT
IMPERIAL VALLEY													2,553	2.8
PALO VERDE-COACHELLA VALLEYS													563	0.6
SOUTHERN CALIFORNIA													12,533	13.9
SAN JOAQUIN VALLEY													52,721	58.6
SALINAS VALLEY													21,651	24.1
													90,021	100.0

-: -: -: 2,466:11,308:17,660:16,148:16,520:19,435: 6,151: 333
 Compiled from shipment data maintained by the Federal-State Market News Service, Stockton, California.

 Most active shipping period.

TABLE 1. FRESH MARKET TOMATO SHIPMENTS, BY ORIGIN, BY CARRIER, BY MONTH, 1969

State and Carrier	Jan.	Feb.	March	April	May	June	July	Aug.	Sept.	Oct.	Nov.	Dec.	Total
10,000 pound units													
California													
Rail-Truck	-	-	-	-	-	104	188	168	168	140	20	-	788
Rail	-	-	-	-	-	-	94	-	47	-	-	-	141
Rail Export	-	-	-	-	-	7	-	-	-	-	-	-	7
Truck	-	-	-	-	2,447	10,532	16,076	15,162	15,411	18,228	6,078	333	84,267
Truck Export	-	-	-	-	19	665	1,302	818	894	1,067	53	-	4,818
Total	-	-	-	-	2,466	11,308	17,660	16,148	16,520	19,435	6,151	333	90,021
Florida													
Rail-Truck	564	308	788	576	736	392	12	-	-	52	428	416	4,272
Truck	17,356	10,333	20,413	17,620	29,154	11,195	88	-	88	4,543	15,453	18,447	144,690
Total	17,920	10,641	21,201	18,196	29,890	11,587	100	-	88	4,595	15,881	18,863	148,962
Michigan													
Truck	-	-	-	-	-	-	37	760	674	-	-	-	1,471
North Carolina													
Truck	-	-	-	-	-	-	-	404	528	-	-	-	932
South Carolina													
Rail-Truck	-	-	-	-	-	220	224	-	-	-	-	-	444
Truck	-	-	-	-	-	6,838	1,954	-	-	-	-	-	8,792
Total	-	-	-	-	-	7,058	2,178	-	-	-	-	-	9,236
Texas													
Truck	32	1	-	-	61	187	-	-	-	-	386	135	802
Virginia													
Truck	-	-	-	-	-	-	6,702	2,610	-	-	-	-	9,312
Puerto Rico													
Boat	200	1,026	828	148	-	-	-	-	-	-	-	-	2,202
Truck Arrivals g/													
Georgia	-	-	-	-	3	235	277	50	30	22	13	-	630
Maryland	-	-	-	-	-	-	355	345	30	8	-	-	738
New Jersey	-	-	-	-	-	-	315	648	410	90	-	-	1,463
Ohio	-	-	23	25	45	55	45	318	752	170	32	23	1,488
Pennsylvania	5	-	3	-	-	5	23	392	912	150	3	-	1,493
Tennessee	-	-	-	-	-	3	124	593	485	195	-	-	1,400
Total	5	-	26	25	48	298	1,139	2,346	2,619	635	48	-	7,212
Domestic Total	18,157	11,668	22,055	18,369	32,465	30,438	27,816	22,268	20,429	24,665	22,466	19,354	270,150
Imports													
Baja California	130	320	111	61	1,245	2,928	4,976	3,917	4,370	5,919	3,791	1,835	29,603
Dominican Republic	-	17	24	-	-	-	-	-	-	-	-	-	41
Guatemala	-	-	-	12	20	-	-	-	-	-	-	-	32
Mexico	6,095	14,163	9,533	7,563	3,776	237	13	2	2	117	585	2,241	44,327
Netherlands	-	-	-	11	35	14	74	25	8	9	2	9	187
Total	6,225	14,500	9,668	7,647	5,076	3,179	5,063	3,944	4,380	6,045	4,378	4,085	74,190
Grand Total	24,382	26,168	31,723	26,016	37,541	33,617	32,879	26,212	24,809	30,710	26,844	23,439	344,340

Compiled from data provided by the Transportation Reports Section, Fruit and Vegetable Division, Market News Branch, Agricultural Marketing Service, U. S. Department of Agriculture, Washington D.C.
 g/ Data shown for major production states not reporting shipments.

TABLE 2. CALIFORNIA TOMATO SHIPMENTS, BY DISTRICTS, BY CARRIER, BY MONTH, 1969

District and Carrier	Jan.	Feb.	March	April	May	June	July	Aug.	Sept.	Oct.	Nov.	Dec.	Total
<u>10,000 pound Units</u>													
Imperial Valley													
All Types	-	-	-	-	1,721	832	-	-	-	-	-	-	2,553
Truck	-	-	-	-	-	-	-	-	-	-	-	-	-
Coachella Valley													
All Types	-	-	-	-	304	259	-	-	-	-	-	-	563
Truck	-	-	-	-	-	-	-	-	-	-	-	-	-
Southern California													
Vine Ripes	-	-	-	-	-	4	20	24	16	28	20	-	112
Rail-Truck	-	-	-	-	-	646	2,137	1,953	1,612	3,001	1,959	333	11,641
Truck	-	-	-	-	-	650	2,157	1,977	1,628	3,029	1,979	333	11,753
Total	-	-	-	-	-	-	-	-	-	-	-	-	-
Romas	-	-	-	-	-	-	-	166	195	227	192	-	780
Truck	-	-	-	-	-	-	-	-	-	-	-	-	-
San Joaquin Valley													
Vine Ripes	-	-	-	-	-	300	122	-	-	-	-	-	422
Truck	-	-	-	-	-	-	-	-	-	-	-	-	-
Romas	-	-	-	-	-	97	164	310	257	266	22	-	1,116
Truck	-	-	-	-	-	-	-	-	-	-	-	-	-
Mature Greens													
Rail-Truck	-	-	-	-	-	92	120	80	88	48	-	-	428
Rail	-	-	-	-	-	-	26	-	7	-	-	-	33
Rail Export	-	-	-	-	-	7	-	-	-	-	-	-	7
Truck	-	-	-	-	234	5,462	10,010	7,727	8,770	11,340	2,354	-	45,897
Truck Export	-	-	-	-	19	665	1,302	818	894	1,067	53	-	4,818
Total	-	-	-	-	253	6,226	11,458	8,625	9,759	12,455	2,407	-	51,183
Salinas Valley													
Romas	-	-	-	-	-	40	71	106	11	33	1	-	262
Truck	-	-	-	-	-	-	-	-	-	-	-	-	-
Mature Greens													
Rail-Truck	-	-	-	-	-	8	48	64	64	64	-	-	248
Rail	-	-	-	-	-	-	68	-	40	-	-	-	108
Truck	-	-	-	-	188	2,896	3,572	4,900	4,566	3,361	1,550	-	21,033
Total	-	-	-	-	188	2,904	3,688	4,964	4,670	3,425	1,550	-	21,389
Grand Totals													
Rail-Truck	-	-	-	-	-	104	188	168	168	140	20	-	788
Rail	-	-	-	-	-	94	-	-	47	-	-	-	141
Rail Export	-	-	-	-	-	7	-	-	-	-	-	-	7
Truck	-	-	-	-	2,447	10,532	16,076	15,162	15,411	18,228	6,078	333	84,267
Truck Export	-	-	-	-	19	665	1,302	818	894	1,067	53	-	4,818
Total	-	-	-	-	2,466	11,308	17,660	16,148	16,520	19,435	6,151	333	90,021
Baja California - Imports ^{a/}													
Romas	50	109	14	7	199	275	559	289	321	575	377	163	2,938
Vine Ripes	80	211	97	54	1,046	2,653	4,417	3,628	4,049	5,344	3,414	1,672	26,665
Total	130	320	111	61	1,245	2,928	4,976	3,917	4,370	5,919	3,791	1,835	29,603

^{a/} Compiled from data maintained by the Federal-State Market News Service office in Stockton, California.
^{b/} Border crossings through Otay Mesa.

TABLE 3. TRUCK ARRIVALS OF TOMATOES FROM 23 MAJOR U.S. AND 4 CANADIAN CITIES, 1969

Region and City	Calif.	Fla.	N.J.	N.C.	Ohio	Penn.	S.C.	Tenn.	Va.	Mexico	Canada	Other a/	Total
<u>1,000 25 pound cartons</u>													
Eastern													
Atlanta, Ga.	177	1,557	2	59	59	25	97	251	39	160	-	270	2,696
Balt., Md.-Wash., D.C.	409	1,422	9	8	29	129	169	7	151	185	-	126	2,644
Boston, Mass.	466	2,543	28	20	81	103	248	62	297	69	10	146	4,073
Buffalo, N.Y.	69	423	4	-	7	19	44	7	44	2	-	76	695
Cincinnati, Oh.	443	1,366	-	7	93	10	119	60	29	145	4	43	2,319
Columbia, S.C.	133	1,191	-	127	7	26	256	40	28	26	-	24	1,858
Detroit, Mich.	366	690	-	-	1	-	13	1	-	200	33	106	1,410
Miami, Fla.	54	249	11	2	-	17	14	24	6	1	-	4	382
N.Y., N.Y.-Newark, N.J.	621	1,182	409	23	20	137	168	12	200	251	-	221	3,244
Philadelphia, Pa.	257	1,283	121	29	44	84	131	26	87	111	3	134	2,310
Pittsburgh, Pa.	226	806	1	1	118	15	43	7	55	52	-	45	1,369
Total	3,221	12,712	585	276	459	565	1,302	497	936	1,202	50	1,195	23,000
Western													
Chicago, Ill.	1,083	2,104	-	-	128	32	151	42	23	403	8	123	4,097
Dallas, Tex.	1,104	758	-	1	-	-	-	19	-	940	-	81	2,903
Denver, Colo.	763	816	-	-	-	-	-	-	-	86	-	31	1,696
Los Angeles, Calif.	3,890	3,352	-	-	-	-	-	-	-	4,036	-	-	11,278
New Orleans, La.	431	659	-	8	-	-	17	-	-	73	-	201	1,589
St. Louis, Mo.	218	490	-	1	-	-	22	2	19	64	-	105	921
San Fran.-Oakland, Calif.	1,550	617	-	-	-	-	-	-	-	1,584	5	-	3,756
Seattle-Tacoma, Wash.	966	191	-	-	-	-	-	-	-	667	106	45	1,975
Total	10,005	8,987	-	10	128	32	190	63	42	7,853	119	586	28,015
Total U.S.	13,226	21,699	585	286	587	597	1,492	560	978	9,055	169	1,781	51,015
Canada													
Montreal, Que.	387	1,076	-	-	8	-	36	-	-	262	684	122	2,575
Toronto, Ont.	834	2,025	-	-	-	-	175	-	-	524	691	512	4,761
Vancouver, B.C.	607	280	-	-	-	-	-	-	-	357	165	8	1,417
Winnipeg, Man.	174	248	-	-	-	-	2	-	-	20	26	2	472
Total	2,002	3,629	-	-	8	-	213	-	-	1,163	1,566	644	9,225
Total U.S. & Canada	15,228	25,328	585	286	595	597	1,705	560	978	10,218	1,735	2,425	60,240

Compiled from arrival data provided by the Transportation Reports Section, Fruit and Vegetable Division, Market News Branch, Agricultural Marketing Service, U. S. Department of Agriculture, Washington, D.C.

a/ Other origins include the following: Alabama - 207, Arkansas - 85, Colorado - 31, Connecticut - 7, Georgia - 252, Illinois - 53, Indiana - 7, Kentucky - 41, Louisiana - 17, Maryland - 295, Massachusetts - 20, Michigan - 220, Mississippi - 1, Missouri - 22, New York - 137, Puerto Rico - 169, Rhode Island - 1, Texas - 78, Washington - 51, West Virginia - 5, Dominican Republic - 52, France - 5, Israel 59, Netherlands - 99, Spain - 164, Morocco - 9, import origins unspecified - 338.

TABLE 4. RAIL, RAIL-TRUCK AND AIR ARRIVALS OF TOMATOES IN 23 MAJOR U.S. AND 4 CANADIAN CITIES, BY ORIGIN, 1969

Region and City	California	Florida	Georgia	South Carolina	Israel	Netherlands	Total
<u>1,000-25 pound cartons</u>							
Eastern							
Atlanta, Ga.	-	-	-	-	-	-	-
Balt., Md.-Wash., D.C.	-	39	-	-	-	-	39
Boston, Mass.	24	673	6	91	2	12	808
Buffalo, N.Y.	-	-	-	-	-	-	-
Cincinnati, Oh.	-	-	-	-	-	-	-
Columbia, S.C.	-	-	-	-	-	-	-
Detroit, Mich.	-	-	-	-	-	-	-
N.Y., N.Y.-Newark, N.J.	38	731	10	34	-	-	813
Philadelphia, Pa.	22	161	-	3	-	-	186
Pittsburgh, Pa.	-	-	-	-	-	-	-
Total	84	1,604	16	128	2	12	1,846
Western							
Chicago, Ill.	182	-	-	-	-	-	182
Dallas, Tex.	-	-	-	-	-	-	-
Denver, Colo.	-	-	-	-	-	-	-
Los Angeles, Calif.	-	-	-	-	-	9	9
New Orleans, La.	5	-	-	-	-	-	5
St. Louis, Mo.	-	-	-	-	-	-	-
S. Fran.-Oakland, Calif.	-	-	-	-	-	1	1
Seattle-Tacoma, Wash.	-	-	-	-	-	-	-
Total	187	-	-	-	-	10	197
Total U.S.	271	1,604	16	128	2	22	2,043
Canada							
Montreal, Que.	4	-	-	-	-	-	4
Toronto, Ont.	-	-	-	-	-	-	-
Vancouver, B.C.	5	-	-	-	-	-	5
Winnipeg, Man.	-	-	-	-	-	-	-
Total	9	-	-	-	-	-	9
Total U.S. & Canada	280	1,604	16	128	2	22	2,052

Compiled from data provided by the Transportation Reports Section, Fruit and Vegetable Division, Market News Branch, Agricultural Marketing Service, U.S. Department of Agriculture, Washington D.C.

TABLE 5. F.O.B. SHIPPING POINT PRICES FOR VINE RIPE TOMATOES FROM THE SAN JOAQUIN VALLEY, 1989

Date		85% or More U. S. No. 1 Breakers to Light Red, Place Pack				
		2-Layer Cartons			3-Layer Cartons	
		4x5s	5x5s	5x6s	6x6s	6x7s
<u>Dollars per containers a/</u>						
June	7	7.00	6.00	6.00	-	-
	8	7.00	6.00	6.00	8.00	-
	9	7.00	6.00-7.00	6.00	8.00	7.00
	12	7.00	6.00	6.00	8.00	7.00
	13	7.00	6.00	6.00	8.00	7.00
	14	7.00	6.00	6.00	8.00	7.00
	15	7.00	6.00	6.00	8.00	7.00
	16	7.00	6.00	6.00	8.00	7.00
	19	7.00	6.00	6.00	8.00	7.00
	20	7.00	6.00	4.00-5.00	7.00	6.00-7.00
	21	7.00	6.00	4.00-5.00	7.00	7.00
	22	7.00	6.00	4.00-5.00	7.00	6.00-7.00
	23	7.00	6.00	4.00-5.00	6.00-7.00	6.00
	26	7.00	6.00	5.00	7.00	6.00
	27	8.00	6.00	5.00	7.00	b/
	28	8.00	6.00	4.00	7.00	-
	29	8.00	6.00	5.00	7.00	-
	30	8.00	6.00	5.00	7.00	-
July	3	8.00	6.00	5.00	7.00	6.00
	4	Holiday				
	5	8.00	6.00	5.00	7.00	6.00
	6	8.00	6.00	5.00	6.00	6.00
	7	8.00	6.00	5.00	6.00	6.00
	10	8.00	7.00	6.00	7.00	6.00
	11	8.00	7.00	6.00	7.00	6.00
	12	8.00	7.00	6.00	7.00	6.00
	13	8.00	7.00	6.00	7.00	6.00
	14	8.00	7.00	6.00	7.00	6.00
	17	Too few sales to establish a market				

Last Report

Compiled from f.o.b. shipping point price reports issued daily by the Federal-State Market News Service office in Stockton, California.

a/ Precooling and palletizing extra.

b/ Too few sales to quote.

TABLE 6. F.O.B. SHIPPING POINT PRICES FOR MATURE GREEN TOMATOES FROM THE
SAN JOAQUIN VALLEY, TRI-WEEKLY, 1989

Date		Loose Pack 25-Pound Cartons, 85% or More No. 1			
		Extra Large	Large	Medium	
<u>Dollars per carton a/</u>					
June	7	7.00	6.00	6.00	
	9	7.00	6.00	6.00	
	12	7.00-8.00	6.00-7.00	6.00	
	14	7.00-8.00	5.00-6.00	5.00-6.00	
	16	6.00	5.00	5.00	
	19	6.00	5.00	5.00	
	21	4.00-6.00	3.00-5.00	3.00-4.50	
	23	5.00-6.00	4.00-5.00	3.00-4.00	
	26	6.00-7.00	5.00	4.00	
	28	6.00-7.00	5.00	4.00	
	30	6.00	5.00	4.00	
	July	3	6.00-7.00	5.00-6.00	4.00-5.00
		5	7.00	6.00	5.00
		7	7.00	6.00	5.00
		10	8.00-9.00	7.00	6.00-7.00
12		8.00-9.00	7.00	6.00-7.00	
14		6.00-8.00	5.00-7.00	5.00-7.00	
17		7.00	6.00	5.00-6.00	
19		6.00-8.00	4.00-6.00	4.00-5.00	
21		6.00-7.00	5.00	4.00	
24		6.00	4.00	3.00	
26		4.00-6.00	3.50-4.00	3.00	
28		4.00-6.00	3.50-4.00	3.00-4.00	
August		31	6.00	5.00	4.00
		2	6.00	5.00	4.00
		4	6.00	5.00	4.00
	7	7.00	5.00	4.00	
	9	7.00	5.00	4.00-5.00	
	11	7.00	5.00-6.00	4.00-5.00	
	14	7.00	6.00	5.00	
	16	5.50-7.00	4.50-6.00	4.00-5.00	
	18	6.00	5.00	4.00	
	21	6.00-7.00	5.00-6.00	4.00-5.00	
	23	7.00	6.00	5.00	
	25	7.00	6.00	5.00	
	28	7.00-8.00	6.00	5.00	
	September	30	7.00-8.00	4.00-6.00	4.00
		1	7.00-8.00	5.00-6.00	4.00
4		Holiday			
6		6.00	4.00	3.00	
8		6.00	4.00	3.00	
11		6.00	4.00	3.00	
13		5.00-6.00	4.00	3.00	
15		5.00-6.00	3.00-4.00	2.50-3.00	

(Continued)

TABLE 6. F.O.B. SHIPPING POINT PRICES FOR MATURE GREEN TOMATOES FROM THE
SAN JOAQUIN VALLEY, TRI-WEEKLY, 1989 (Cont'd)

Date		Loose Pack 25-Pound Cartons, 85% or More No. 1		
		Extra Large	Large	Medium
Dollars per carton a/				
September	18	b/	b/	b/
	20	c/	c/	c/
	22	8.00-9.00	6.00-7.00	4.00-5.00
	25	8.00	6.00	4.00-5.00
	27	8.00	6.00	4.00-5.00
	29	b/	b/	b/
October	2	c/	c/	c/
	4	9.00	7.00	6.00
	6	9.00	7.00	6.00
	9	Holiday		
	11	9.00	7.00	5.00
	13	9.00	7.00	5.00
	16	10.00-11.00	7.00-8.00	5.00
	18	11.00	7.00-8.00	5.00
	20	11.00	7.00-8.00	5.00
	23	11.00	8.00	5.00
	25	11.00	8.00	5.00-6.00
	27	9.00-11.00	7.00-8.00	4.00-6.00
	30	8.00	6.00	4.00-5.00
November	1	7.00-8.00	5.00-6.00	4.00
	3	6.00-7.00	4.00-5.00	3.00-4.00
	6	5.00-6.00	4.00-5.00	3.00-4.00
	8	Too few sales to establish a market		

Last Report

Compiled from f.o.b. shipping point price reports issued daily by the Federal-State Market News Service office in Stockton, California.

a/ Palletizing and gassing extra.

b/ Rain and wet fields curtail harvest. Too few sales to quote.

c/ Most shippers not packing due to wet fields. Too few sales to establish a market. Most shipments from gas rooms.

TABLE 7. F.O.B. SHIPPING POINT PRICES FOR MATURE GREEN TOMATOES FROM THE
SALINAS VALLEY, TRI-WEEKLY, 1989

Date	Loose Pack 25-Pound Cartons, 85% or More No. 1				
	Extra Large	Large	Medium		
<u>Dollars per carton @/</u>					
June	14	7.00	6.00	6.00	
	16	6.00	5.00	5.00	
	19	5.00-7.00	4.50-5.00	4.50-5.00	
	21	5.00	4.00	4.00	
	23	5.00-7.00	4.00-5.00	3.50-5.00	
	26	6.00-7.00	5.00	4.00-5.00	
	28	6.00-7.00	5.00	4.00-5.00	
	30	5.00-6.00	3.50-4.50	3.00-4.00	
	July	3	6.00	4.50-5.00	4.00
		5	7.00	6.00	5.00
7		7.00	6.00	5.00	
10		8.00-9.00	7.00	6.00-7.00	
12		8.00-9.00	7.00	6.00-7.00	
14		7.00-8.00	6.00-7.00	5.00-6.00	
17		7.00-8.00	6.00-7.00	5.00-7.00	
19		7.00	6.00	5.00	
21		7.00	5.00-6.00	4.00-5.00	
24		6.00	4.00-5.00	3.00-4.00	
26		b/	b/	b/	
28		b/	b/	b/	
August		31	b/	b/	b/
		2	b/	b/	b/
	4	b/	b/	b/	
	7	7.00	5.00	4.00	
	9	7.00	5.00	4.00	
	11	7.00	5.00-6.00	4.00-5.00	
	14	7.00	6.00	5.00	
	16	7.00	5.00-6.00	4.00-5.00	
	18	6.00	5.00	4.00	
	21	6.00	5.00	4.00	
	23	6.00-7.00	5.00-6.00	4.00-5.00	
	25	6.00-7.00	5.00-6.00	4.00-5.00	
	28	7.00	5.00-6.00	4.00-5.00	
	September	30	7.00	5.00	4.00
1		7.00	5.00	4.00	
4		Holiday			
6		6.00	4.00	3.00	
8		5.00-6.00	3.50-4.00	2.50-3.00	
11		6.00	4.00	3.00	
13		5.00-6.00	3.50-4.00	3.00	
15		5.00-6.00	3.50-4.00	2.50-3.00	
18		c/	c/	c/	
20		c/	c/	c/	
22		6.00-8.00	5.00-6.00	4.00-5.00	

(Continued)

TABLE 7. F.O.B. SHIPPING POINT PRICES FOR MATURE GREEN TOMATOES FROM THE SALINAS VALLEY, TRI-WEEKLY, 1989 (Cont'd)

Date		Loose Pack 25-Pound Cartons, 85% or More No. 1		
		Extra Large	Large	Medium
Dollars per carton a/				
September	25	7.00-8.00	5.00-6.00	4.00-5.00
	27	7.00-8.00	5.00-6.00	4.00-5.00
	29	c/	c/	c/
October	2	c/	c/	c/
	4	8.00-9.00	7.00	6.00
	6	8.00-9.00	7.00	6.00
	9	Holiday		
	11	8.00	7.00	6.00
	13	9.00	6.00-7.00	5.00-6.00
	16	9.00-11.00	7.00	5.00
	18	10.00-11.00	7.00-8.00	5.00
	20	10.00-11.00	7.00-9.00	4.00-5.00
	23	11.00-12.00	8.00-9.00	5.00-6.00
	25	11.00	8.00	5.00
	27	c/	c/	c/
	30	c/	c/	c/
November	1	7.00-8.00	5.00-6.00	4.00
	2	Supplies in too few hands to establish a market		

Last Report

Compiled from f.o.b. shipping point price reports issued daily by the Federal-State Market News Service office in Stockton, California.

a/ Palletizing and gassing extra.

b/ Local fields not mature enough to harvest. Supplies in too few hands to establish a market. Light shipments from gas rooms continue.

c/ Most shippers not packing due to wet fields. Too few sales to establish a market. Light shipments from gas rooms.

TABLE 8. F.O.B. SHIPPING POINT PRICES FOR ROMA TOMATOES FROM THE SAN JOAQUIN AND SALINAS VALLEYS, TRI-WEEKLY, 1969

Date	25 Pound Cartons, Loose Pack		Date	25 Pound Cartons, Loose Pack			
	San Joaquin Valley	Salinas Valley		San Joaquin Valley	Salinas Valley		
	<u>Dollars per carton a/</u>			<u>Dollars per carton a/</u>			
June	7	9.00	-	August	21	4.00-5.00	4.00-5.00
	9	9.00	-		23	4.00-5.00	4.00
					25	4.00-5.00	4.00
	12	8.00	-				
	14	5.00-8.00	-		28	5.00	4.00
	16	6.00-7.00	-		30	5.00	4.00
				September	1	5.00	b/
	19	6.00-7.00	-				
	21	6.00-7.00	6.00		4	Holiday	
	23	6.00-7.00	6.00		6	5.00	b/
					8	5.00	5.00
	26	6.00-7.00	6.00				
	28	5.00-6.00	6.00		11	5.00-6.00	b/
	30	5.00-6.00	5.00-6.00		13	5.00-6.00	5.00
					15	4.00-6.00	5.00
July	3	5.00-6.00	5.00-6.00				
	5	5.00-6.00	5.00-6.00		18	Too few sales to establish a market	
	7	5.00-6.00	5.00-6.00		20	Too few sales to establish a market	
					22	5.00-6.00	b/
	10	5.00-6.00	6.00				
	12	6.00-7.00	6.00		25	b/	6.00
	14	6.00-8.00	6.00		27	Too few sales to establish a market	
					29	Too few sales to establish a market	
	17	6.00-8.00	6.00				
	19	5.00-7.00	6.00	October	2	Too few sales to establish a market	
	21	6.00-7.00	6.00		4	8.00	8.00
					6	8.00	8.00
	24	6.00	6.00				
	26	5.00-6.00	b/		9	Holiday	
	28	5.00-6.00	b/		11	Too few sales to establish a market	
					13	6.00-7.00	b/
August	31	4.00-5.00	b/				
	2	4.00-5.00	b/		16	7.00	6.00-7.00
	4	4.00-5.00	b/		18	6.00-7.00	7.00
					20	6.00-7.00	7.00
	7	4.00-6.00	5.00				
	9	4.00-6.00	5.00		23	6.00-7.00	b/
	11	5.00-6.00	5.00-6.00		25	Too few sales to establish a market	
					27	Too few sales to establish a market	
	14	5.00-6.00	5.00-6.00				
	16	4.50-5.50	5.00		30	Too few sales to establish a market	
	18	4.00-5.00	4.00-5.00				

Last Report

Compiled from shipping point price reports issued daily by the Federal-State Market News Service in Stockton, California.

a/ Precooling and palletizing extra.
 b/ Too few sales to establish a market.

TABLE 9. F.O.B. SHIPPING POINT PRICES FOR VINE RIPE TOMATOES FROM SOUTHERN CALIFORNIA OR BAJA CROSSINGS THROUGH OTAY MESA, TRI-WEEKLY, 1989

Date		Breakers-Light Red, No Grade Marks, Place Pack				
		2-Layer Flats			3-Layer Cartons	
		4x4-4x5s	5x5s	5x6s	6x6s	6x7s
Dollars per container a/						
June	14	8.00	6.00-7.00	5.00-6.00	7.00-8.00	6.00-7.00
	16	8.00	6.00-7.00	5.00-6.00	7.00-8.00	6.00-7.00
	19	7.00	6.00	4.00-5.00	6.00-7.00	6.00
	21	6.00	5.00	4.00	6.00	5.00
	23	5.00	4.00	3.00	5.00	4.00
	26	5.00	4.00	3.00	5.00	4.00
	28	5.00-6.00	4.00-5.00	3.00-4.00	5.00	4.00-5.00
	30	5.00-6.00	4.00-5.00	3.00-4.00	5.00	4.00-5.00
July	3	6.00	5.00-6.00	4.00	6.00	4.00-5.00
	5	7.00	6.00	5.00	6.00-7.00	4.00-5.00
	7	7.00-8.00	6.00-7.00	5.00-6.00	6.00-7.00	5.00-6.00
	10	8.00	7.00	6.00	6.00-8.00	6.00
	12	8.00	7.00	6.00	6.00-8.00	6.00
	14	6.00-7.00	5.00-6.00	4.00-5.00	6.00-7.00	6.00
	17	6.00-7.00	5.00-6.00	4.00-5.00	6.00-7.00	6.00
	19	6.00-7.00	5.00-6.00	4.00-5.00	6.00-7.00	6.00
	21	6.00-7.00	5.00-6.00	4.00-5.00	6.00-7.00	6.00
	24	6.00	4.00-5.00	3.00-4.00	6.00-7.00	5.00-6.00
	26	5.00	4.00	3.00-4.00	5.00-6.00	5.00-6.00
	28	5.00	4.00	3.00-4.00	6.00	6.00
	31	4.00-5.00	4.00	3.00-4.00	5.00-6.00	4.00-6.00
Aug.	2	4.00-5.00	4.00	3.00-4.00	5.00-6.00	4.00-6.00
	4	4.00-6.00	4.00-5.00	3.00-4.00	4.00-6.00	4.00-5.00
	7	5.00-6.00	4.00-5.00	4.00	5.00-6.00	5.00
	9	5.00	4.00	4.00	5.00-6.00	5.00
	11	5.00	4.00	3.00-4.00	5.00-6.00	5.00
	14	5.00	4.00	3.00-4.00	5.00-6.00	5.00
	16	4.00	3.00-4.00	3.00-4.00	4.00-5.00	4.00
	18	4.00	4.00	3.00	4.00-5.00	4.00
	21	4.00	4.00	3.00-4.00	4.00-5.00	4.00
	23	5.00-6.00	4.00-5.00	4.00	5.00-6.00	4.00-5.00
	25	6.00	5.00	4.00-5.00	6.00	5.00
	28	7.00	6.00	5.00-6.00	6.00-7.00	6.00
	30	7.00	6.00	5.00-6.00	6.00-7.00	6.00
Sept.	1	5.00	5.00	5.00	6.00-7.00	6.00
	4	Holiday				
	6	5.00	4.00	4.00	6.00	5.00
	8	4.00-5.00	4.00	4.00	6.00	5.00
	11	4.00-5.00	4.00	4.00	6.00	5.00-6.00
	13	4.00	3.00-4.00	3.00-4.00	5.00-6.00	5.00-6.00
	15	4.00	3.00-4.00	3.00-4.00	4.00-5.00	4.00-5.00
	18	4.00-5.00	3.00-4.00	3.00-4.00	5.00	4.00-5.00
	20	5.00-6.00	4.00-5.00	4.00-5.00	6.00	5.00
	22	6.00	4.00-5.00	4.00-5.00	6.00-7.00	5.00-6.00

(Continued)

TABLE 9. F.O.B. SHIPPING POINT PRICES FOR VINE RIPE TOMATOES FROM SOUTHERN CALIFORNIA OR
BAJA CROSSINGS THROUGH OTAY MESA, TRI-WEEKLY, 1969 (Cont'd)

Date	Breakers-Light Red, No Grade Marks, Place Pack				
	2-Layer Flats			3-Layer Cartons	
	4x4-4x5s	5x5s	5x6s	6x6s	6x7s
<u>Dollars per container a/</u>					
Sept. 25	6.00-7.00	4.00-6.00	4.00-5.00	6.00-7.00	5.00-6.00
27	7.00-8.00	6.00-7.00	5.00-6.00	7.00	6.00
29	8.00	7.00-8.00	6.00-7.00	7.00-8.00	6.00-7.00
Oct. 2	10.00	8.00-10.00	7.00-8.00	8.00-10.00	7.00-9.00
4	9.00	8.00	7.00	7.00-9.00	6.00-8.00
6	8.00	6.00-7.00	5.00-6.00	6.00-8.00	6.00-7.00
9	Holiday				
11	7.00	5.00-6.00	4.00-5.00	6.00-7.00	5.00-6.00
13	7.00	6.00	5.00	7.00	6.00
16	7.00-8.00	6.00	5.00	7.00	6.00
18	7.00-8.00	6.00	5.00	7.00	6.00
20	8.00	6.00	5.00	7.00	6.00
23	9.00	7.00-8.00	6.00-7.00	7.00-8.00	6.00-7.00
25	9.00	7.00-8.00	6.00-7.00	8.00	7.00
27	7.00-8.00	6.00-7.00	5.00-6.00	6.00-8.00	5.00-7.00
Nov. 30	7.00	5.00-6.00	4.00-5.00	6.00-7.00	5.00-6.00
1	6.00-7.00	5.00-6.00	4.00-5.00	6.00	5.00
3	6.00-7.00	5.00	4.00-5.00	6.00	5.00
6	7.00	5.00-6.00	4.00-5.00	6.00	5.00
8	7.00	5.00-6.00	4.00	6.00	5.00
10	Holiday				
13	7.00	5.00-6.00	4.00	6.00	5.00
15	6.00	5.00	4.00	6.00	5.00
17	5.00	3.00-4.00	3.00-4.00	5.00	4.00-5.00
20	5.00	4.00	3.00-4.00	5.00	
22	5.00-6.00	4.00	3.00-4.00	5.00	4.00
24	Holiday				
27	5.00-6.00	4.00-5.00	3.00-4.00	5.00-6.00	4.00-5.00
29	5.00-6.00	4.00-5.00	3.00-4.00	5.00-6.00	4.00-5.00
Dec. 1	6.00	5.00	4.00	6.00	5.00
4	7.00	6.00	5.00	7.00	6.00
6	8.00	7.00	6.00	7.00-9.00	6.00-8.00
8	10.00	9.00	8.00	9.00-10.00	8.00-10.00
11	14.00	12.00	10.00-12.00	12.00	10.00-12.00
13	14.00	12.00	10.00-12.00	12.00	10.00-12.00
15	14.00	12.00	10.00-12.00	12.00	10.00-12.00
18	12.00-14.00	10.00-12.00	8.00-12.00	8.00-12.00	6.00-10.00
20	10.00-12.00	8.00-10.00	8.00	7.00-8.00	6.00-7.00
22	Supplies insufficient to quote				

Last Report

Compiled from f.o.b. shipping point price reports issued daily by the Federal-State Market News Service office in Los Angeles, California.
a/ Extra services extra.

TABLE 10.

**INDICATIONS OF SHIPPERS ASKING PRICES FOR ROMA TYPE TOMATOES FROM
SOUTHERN CALIFORNIA OR BAJA CROSSINGS THROUGH OTAY MESA, TRI-WEEKLY, 1989 ^{a/}**

Date		25 Pound Cartons Loose Pack	Date	25 Pound Cartons Loose Pack			
		<u>Dollars per carton</u>	<u>Dollars per carton</u>				
June	14	8.00-9.00	September	11	5.00-6.00		
	16	8.00		13	5.00		
	19	6.00-8.00		15	4.00-5.00		
	21	6.00		18	4.00-5.00		
	23	5.00-6.00		20	5.00-6.00		
	26	4.00-6.00		22	5.00-6.00		
	28	5.00		25	5.00-6.00		
	30	5.00		27	6.00-7.00		
				29	7.00-8.00		
	July	3		5.00	October	2	7.00-8.00
5		5.00-6.00	4	8.00			
7		6.00	6	8.00-9.00			
10		6.00	9	Holiday			
12		6.00	11	8.00			
14		6.00	13	7.00-8.00			
17		6.00-7.00	16	6.00-8.00			
19		6.00-7.00	18	7.00-8.00			
21		6.00-7.00	20	7.00-8.00			
24		6.00-7.00	23	7.00-8.00			
26		4.00-5.00	25	7.00-8.00			
28		3.00-5.00	27	8.00			
31		3.00-5.00	30	8.00			
August		2	4.00-5.00	November		1	8.00
		4	3.50-6.00			3	8.00
	7	3.50-6.00	6		8.00		
	9	3.00-5.00	8		8.00		
	11	4.00-6.00	10		Holiday		
	14	4.00-6.00	13		8.00		
	16	4.00-5.00	15		6.00-8.00		
	18	4.00-5.00	17		6.00-8.00		
	21	3.50-4.00	20		6.00-8.00		
	23	3.50-5.00	22		6.00-7.00		
	25	3.50-5.00	24		Holiday		
	28	4.00-5.00	27		4.00-6.00		
	30	4.00-5.00	29		4.00-6.00		
	September	1	4.00-5.00		December	1	4.00-6.00
4		Holiday		Last Report			
6		5.00					
8		5.00-6.00					

Compiled from information obtained by the Federal-State Market News Service office in Los Angeles, California.
^{a/} No f.o.b. shipping point price report was made. Market coverage was incomplete and may not represent actual trading levels but is an unofficial indication of market trends.

TABLE 11. SHIPPING POINT PRICE TRENDS FOR TOMATOES FROM THE IMPERIAL-PALO VERDE VALLEYS, TRI-WEEKLY, 1969

Date		Mature Greens		
		25-Pound Cartons, Loose Pack		
		Extra Large	Large	Medium
<u>Dollars per carton</u>				
May	9	Supplies in too few hands to establish a market		
	16	12.00	10.00	8.00
	23	8.00	6.00	5.00
	31	8.00	6.00	6.00
June	6	5.00	5.00	5.00
	13	Offerings in too few hands to establish a market		

Compiled from shipping point trend reports issued weekly by the Federal-State Market News Service office in El Centro, California.

TABLE 12. WHOLESALE MARKET PRICES FOR CALIFORNIA ORIGIN TOMATOES AT LOS ANGELES, WEEKLY, 1969

Wednesday Date		Breakers-Light Red, Place Pack				Mature Green	Plum-Roma
		2-Layer Flats		3-Layer Lugs		25-lb. Ctns	25-28 lb. Ctns
		4x5s	5x6s	6x6s	6x7s	Large	Loose
<u>Dollars per container</u>							
May	10	26.00-28.00	23.00-24.00	-	-	11.00-13.00	-
	17	12.00-14.00	10.00-12.00	-	-	8.50-9.50	-
	24	14.00	11.00	-	-	7.50-10.00	-
	31	11.00-12.00	8.00	-	-	7.50-9.00	8.00-9.00
June	7	9.00-10.00	7.00-8.00	8.00-10.50	7.00-9.50	6.50-8.00	7.00-8.00
	14	9.00-10.00	6.00-8.00	8.00-10.00	7.00-9.00	6.00-8.00	8.00-9.00
	21	7.00-9.00	6.00-6.00	8.00-9.00	7.00-8.00	6.50-8.00	7.00-9.00
	28	5.50-7.00	4.00-5.00	6.00-7.00	5.00-6.00	6.00-8.00	6.00-8.00
July	5	7.00-8.00	5.00-6.00	7.00-8.00	6.00-7.00	6.00-7.50	6.00-7.00
	12	8.00-9.00	6.00-7.00	7.50-9.00	7.50-8.00	7.00-9.00	7.00-9.00
	19	7.00-8.00	4.50-6.50	7.00-8.50	6.00-8.00	8.00-9.50	7.00-8.00
	26	5.00-6.00	3.00-5.00	6.00-8.00	4.00-7.00	7.00-8.00	5.00-8.00
August	2	4.00-6.00	3.50-5.00	6.00-8.00	5.00-7.00	6.50-7.50	4.00-7.00
	9	5.50-7.00	5.00-6.00	7.00-8.00	6.00-7.00	7.00-8.50	4.00-7.00
	16	5.00-7.00	4.00-6.00	6.00-8.00	5.00-7.00	7.00-8.50	5.00-7.00
	23	5.50-6.50	4.00-5.50	5.00-7.00	5.00-6.00	7.50-8.00	6.00-8.00
	30	6.00-8.00	5.00-6.50	7.00-8.00	6.50-8.00	7.50-9.00	5.00-6.50
September	6	6.00-7.00	5.00-6.50	7.00-8.00	6.00-7.50	6.00-8.00	5.00-7.00
	13	4.50-7.00	4.00-5.00	7.00-8.00	6.00-7.00	4.50-7.00	6.00-7.50
	20	5.00-7.00	4.00-6.00	6.50-8.00	5.50-7.00	5.50-8.00	6.00-7.50
	27	7.50-9.00	6.00-7.00	8.00-8.50	7.00-8.00	7.50-9.00	7.00-8.50
October	4	9.00-11.00	7.50-8.50	9.00-12.00	8.00-10.00	8.00-10.00	8.00-10.00
	11	7.00-9.00	5.00-6.50	7.00-9.00	7.00-8.00	8.00-9.50	7.00-10.00
	18	6.50-9.00	5.00-7.00	7.50-9.00	6.50-8.00	8.00-9.50	4.00-6.00
	25	8.50-12.00	6.00-9.00	8.00-10.00	7.00-9.00	8.00-12.00	8.00-10.00
November	1	6.50-9.00	4.00-6.00	6.00-9.00	5.00-7.00	6.50-9.50	8.00-10.00
	8	6.00-8.00	4.50-6.00	7.00-8.00	6.00-7.00	8.00-9.00	8.50-9.00
	15	6.00-9.00	4.50-6.00	7.00-8.00	6.00-7.50	8.00-8.50	9.00-10.00
	22	6.00-7.00	4.00-5.00	6.00-7.00	5.50-7.00	8.00-9.00	6.00-9.00
	29	6.00-8.00	4.00-6.00	6.50-8.00	7.00	-	6.00-8.00
December	6	9.00-12.00	7.00-8.00	9.00-10.00	8.00	-	6.00-7.00
	13	19.00-20.00	12.00-15.00	14.00-15.00	12.00-15.00	-	11.00-13.00
	20	14.00-15.00	8.00-13.00	8.00-9.00	7.00-9.00	-	6.00-9.00
	27	14.00-18.00	9.00-12.00	9.00-12.00	9.00	-	6.00-10.00

Compiled from the "Los Angeles Wholesale Fruit and Vegetable Report" issued daily by the Federal-State Market News Service office in Los Angeles, California.

TABLE 13. WHOLESALE MARKET PRICES FOR CALIFORNIA ORIGIN TOMATOES AT SAN FRANCISCO, WEEKLY, 1989

Wednesday Date	Place Pack, Breakers to Red			Loose Pack			
	2-Layer Flats		3-Layer Lugs	25-pound Cartons			
	4x5s	5x6s	6x6s	Extra-Large	Medium	Romas	
<u>Dollars per container</u>							
May	17	12.50-14.00	12.50-14.00	12.50-14.00	13.50	11.50	-
	24	10.00-11.00	10.00-11.00	10.00-11.00	13.50	11.50	-
	31	12.50-13.50	12.50-13.50	12.50-13.50	13.50	11.50	-
June	7	9.00-11.00	7.00-9.00	10.00-11.50	9.00-11.50	7.00-7.50	-
	14	9.00-10.00	7.00-8.00	10.00-11.00	7.50-8.50	5.00-7.00	-
	21	8.00-9.00	6.00-8.00	8.00-10.00	7.50-8.00	5.00-7.00	-
	28	10.00-11.00	6.00-7.00	9.50	7.00-8.00	5.00-6.00	8.00-9.00
July	5	10.00-11.00	6.00-7.00	9.50	7.00-8.00	5.00-6.00	8.00-9.00
	12	12.00-13.00	10.00-11.00	12.00-14.00	9.50-10.00	8.50-9.00	9.00-10.00
	19	8.50-9.50	6.50-7.50	10.00-12.00	8.50	-	8.50-9.50
	26	8.50-9.00	5.50-7.00	8.00-9.00	6.50-7.50	4.50	8.50-10.00
August	2	6.00-7.00	5.00-6.00	6.00-7.00	-	4.50	5.00-7.00
	9	7.50-8.00	6.50-7.00	8.00-8.50	-	6.75	5.00-7.00
	16	7.50-8.00	6.50-7.00	8.00-8.50	-	6.50-7.00	6.00-7.00
	23	7.50-8.00	6.50-7.00	8.00-8.50	-	6.50-7.00	6.00-7.00
	30	8.50-9.00	7.50-8.00	8.50-9.00	10.50-11.00	7.50-8.00	7.00-8.00
September	7	8.50-8.75	7.50-7.75	8.00-8.50	7.00-8.00	3.00-5.00	6.50-7.50
	14	6.00-7.00	5.00-6.00	6.00-7.00	6.00-7.00	3.00-4.00	6.00
	21	6.00-7.00	5.00-6.00	6.00-7.00	a/	a/	6.00
	28	9.50-11.00	7.50-8.50	10.00-11.00	a/	a/	5.00-5.00
October	4	12.00-15.00	10.00-11.00	12.00-15.00	13.00	-	9.00-10.00
	11	9.00-10.00	6.50-7.00	8.50-9.50	9.00-10.00	-	10.00-12.00
	18	9.00-10.00	6.00-7.00	10.50	9.00-10.00	-	9.00-11.00
	25	10.50-11.50	8.50-9.50	11.50	-	-	11.00-12.00
November	1	10.00-10.75	7.00-8.00	10.00-11.00	-	-	10.00-12.00
	8	9.50-10.00	6.50-7.50	9.50-10.00	-	-	-
	15	9.00-11.00	6.50-8.00	9.50	-	-	-
	22	8.00-9.00	6.00-7.00	8.00-9.00	-	-	-
	29	7.50-8.50	5.50-6.50	7.50-9.00	-	-	-

Compiled from the "San Francisco Wholesale Fruit and Vegetable Report" issued daily by the Federal-State Market News Service office in San Francisco, California.

a/ No good quality available due to rain damage.

TABLE 14. RETAIL PRICES FOR TOMATOES IN THE SACRAMENTO AND SAN FRANCISCO BAY AREA, MAJOR CHAIN STORES, WEEKLY, 1989

Date	Sacramento		San Francisco Bay Area		
	Range	Monthly	Range	Mostly	
<u>Dollars per pound</u>					
January	4	.49-.99	-	.69-.98	.69-.79
	11	.59-.79	.59-.69	.49-.98	-
	18	.69-.99	-	.39-.98	-
	25	.59-.99	-	.89-.99	-
February	1	.69-.99	.99	.69-.99	.98-.99
	8	.89-.99	.99	.49-1.18	-
	15	.69-.99	.69	.39-1.19	-
	22	.59-.99	.59-.69	.49-1.19	-
March	1	.39-.99	-	.39-.99	.88-.99
	8	.39-.99	.69-.99	.69-.99	-
	15	.59-.89	.89	.49-.89	.89
	22	.59-.89	-	.49-.89	.88-.89
	29	.69-1.19	-	.69-.99	-
April	5	.69-1.09	-	.69-.99	-
	12	.79-1.09	.99	.79-1.09	.89-.99
	19	.89-1.29	-	.69-1.29	-
	26	.69-1.29	-	.49-1.29	-
May	3	1.19-1.29	1.20	.49-1.29	1.28-1.29
	10	1.29-1.79	-	1.29-1.89	1.79-1.89
	17	.99-1.79	1.29-1.79	.59-1.79	-
	24	.79-1.79	-	.59-1.79	-
June	1	.69-1.29	-	.79-.99	.99
	7	.45-.89	-	.59-.99	-
	14	.69-.79	.69	.49-.79	-
	21	.59-.69	.69	.49-.69	.59
	28	.49-.69	.49-.69	.49-.69	.59-.68
July	5	.49-.59	.59	.39-.68	.39-.49
	12	.49-.69	.59-.69	.59-.88	.69
	19	.59-.79	-	.49-.88	.79
	26	.59-.99	.69	.38-.88	-
August	2	.34-.79	-	.49-.88	-
	9	.39-.69	-	.38-.79	.49-.59
	16	.39-.69	-	.33-.79	.69-.79
	23	.34-.59	.57-.59	.33-.69	-
	30	.49-.79	.59-.79	.33-.59	.39-.49
September	6	.59-.79	.69-.79	.25-.69	.59-.69
	13	.49-.69	.49	.49-.69	.68-.69
	20	.49-.79	.49-.50	.39-.69	-
	27	.50-.69	.59-.69	.39-.69	.58-.59
October	4	.69-.89	-	.38-.89	-
	11	.49-.69	-	.59-.99	-
	18	.59-.99	-	.49-.99	.88-.99
	25	.69-1.09	-	.59-1.09	-
November	1	.49-.109	-	.59-1.09	-
	8	.69-1.09	.79	.79-.99	-
	16	.59-.79	-	.59-.88	-
	21	.69-.79	.79	.69-.88	.69-.79
	29	.59-.79	.69-.79	.59-.88	-
December	5	.59-.89	.77-.79	.59-.88	.69-.79
	13	.79-1.19	-	.79-1.19	.79-.89
	21	.69-1.19	-	.69-1.19	-
	28	No report issued.			-

Compiled from "Food Market News - Sacramento and San Francisco Bay Area" issued weekly by the California Department of Food and Agriculture, Market News Branch, Sacramento, California.

TABLE 15. TOMATOES FOR FRESH MARKET PLANTED AND HARVESTED ACREAGE, BY STATE, 1987-1989

State	Area Planted			Area Harvested		
	1987	1988	1989	1987	1988	1989
	<u>Acres</u>					
Alabama	4,200	3,700	3,200	3,500	3,100	2,700
Arkansas	1,000	1,100	1,100	1,000	1,100	1,000
California	29,500	37,500	38,400	29,500	37,500	38,400
Florida	55,600	58,400	61,800	55,300	58,000	60,200
Georgia	3,000	3,000	2,800	2,900	2,900	2,700
Indiana	1,400	1,500	1,700	1,200	1,100	1,400
Louisiana	400	410	400	370	380	340
Maryland	3,000	2,700	2,800	2,600	2,500	2,600
Massachusetts	600	610	660	580	570	550
Michigan	3,300	3,100	2,800	2,800	2,400	2,500
New Jersey	6,400	6,000	6,200	6,100	5,800	5,100
New York	2,300	2,500	2,600	2,100	2,400	2,500
North Carolina	1,600	1,600	1,600	1,500	1,400	1,300
Ohio	2,900	2,900	2,800	2,700	2,200	2,700
Pennsylvania	4,600	5,100	4,100	4,500	4,900	4,000
South Carolina	3,600	3,800	3,700	3,600	3,700	3,600
Tennessee	4,800	4,900	4,800	4,600	4,600	4,300
Texas	2,800	3,300	4,000	2,600	3,200	2,800
Virginia	2,900	3,000	3,200	2,800	3,000	3,000
Hawaii	250	250	250	250	250	250
Total U. S.	134,150	145,370	148,910	130,500	141,100	141,940

Compiled from "Vegetables - 1989, Preliminary Acreage, Yield and Production" issued January 9, 1990 by the Agricultural Statistics Board, National Agricultural Statistics Service, USDA, Washington, D.C.

TABLE 16. TOMATOES FOR FRESH MARKET YIELD AND PRODUCTION, BY STATE, 1987-1989

State	Yield Per Acre			Production		
	1987	1988	1989	1987	1988	1989
	<u>Hundredweight</u>			<u>1,000 Hundredweight</u>		
Alabama	100	115	120	350	357	324
Arkansas	290	290	140	290	319	140
California	300	245	270	8,850	9,188	10,368
Florida	300	325	305	16,590	18,850	18,361
Georgia	110	180	200	319	522	540
Indiana	160	150	155	192	165	217
Louisiana	120	120	90	44	46	31
Maryland	185	135	125	481	338	325
Massachusetts	215	185	225	125	105	124
Michigan	90	85	100	252	204	250
New Jersey	95	70	85	580	406	434
New York	150	160	170	315	384	425
North Carolina	170	150	190	255	210	247
Ohio	155	125	145	419	275	392
Pennsylvania	160	140	200	720	686	800
South Carolina	245	400	390	882	1,480	1,404
Tennessee	180	180	140	828	828	602
Texas	100	90	90	260	288	252
Virginia	245	420	365	686	1,260	1,095
Hawaii	280	280	240	70	70	60
Average/Total U. S.	249	255	256	32,508	35,981	36,391

Compiled from "Vegetables - 1989, Preliminary Acreage, Yield and Production" issued January 9, 1990 by the Agricultural Statistics Board, National Agricultural Statistics Service, USDA, Washington, D.C.

TABLE 17. TOMATOES FOR FRESH MARKET, AVERAGE PRICE AND CROP VALUE, BY STATE, 1987-1989

State	Average Price			Crop Value		
	1987	1988	1989	1987	1988	1989
	Dollars per Hundredweight			1,000 Dollars		
Alabama	16.80	19.00	22.50	5,880	6,783	7,290
Arkansas	31.70	43.50	35.40	9,193	13,877	4,956
California	21.50	29.90	23.90	190,275	274,721	247,795
Florida	29.50	25.20	38.20	489,405	475,020	701,390
Georgia	25.20	22.30	24.00	8,039	11,641	12,960
Indiana	23.50	30.00	27.00	4,512	4,950	5,859
Louisiana	44.70	44.00	38.00	1,967	2,024	1,178
Maryland	22.70	33.00	24.60	10,919	11,154	7,995
Massachusetts	65.00	55.00	60.00	8,125	5,775	7,440
Michigan	20.00	34.00	25.20	5,116	6,936	6,300
New Jersey	25.70	32.50	31.00	14,906	13,195	13,454
New York	32.80	45.40	37.70	10,332	17,434	16,023
North Carolina	17.80	20.70	15.40	4,539	4,347	3,804
Ohio	18.10	21.40	36.90	7,584	5,885	14,465
Pennsylvania	15.80	20.70	21.40	11,376	14,200	17,120
South Carolina	20.20	18.20	17.70	17,816	26,936	24,851
Tennessee	23.00	28.00	25.00	19,044	23,184	15,050
Texas	25.70	23.40	18.90	6,682	6,739	4,763
Virginia	21.80	32.10	36.40	14,955	40,446	39,858
Hawaii	42.60	48.50	54.00	2,982	3,395	3,240
Average/Total U. S.	26.00	26.90	31.80	843,647	968,642	1,155,791

Compiled from "Vegetables - 1989, Preliminary Acreage, Yield and Production" issued January 9, 1990 by the Agricultural Statistics Board, National Agricultural Statistics Service, USDA, Washington, D.C.

TABLE 18. HARVESTED ACREAGE OF CALIFORNIA FRESH MARKET TOMATOES, BY SEASON, BY AREA, 1987-1989

Year and Season	San Joaquin Valley	Central Coast	South Coast	Desert	State Total
<u>Acres</u>					
<u>1987</u>					
Spring	-	-	-	1,100	1,100
Summer	20,000	4,500	3,000	-	27,500
Total	20,000	4,500	3,000	1,100	28,600
<u>1988</u>					
Spring	-	-	-	1,100	1,100
Summer	26,800	5,800	3,800	-	36,400
Total	26,800	5,800	3,800	1,100	37,500
<u>1989</u>					
Spring	-	-	-	2,000	2,000
Summer	26,800	5,800	3,800	-	36,400
Total	26,800	5,800	3,800	2,000	38,400

Source: "California Vegetable Review Volume 11 No. 1" released February 8, 1990 by the California Agricultural Statistics Branch, Sacramento, California.

TABLE 19. MONTHLY AVERAGE F.O.B. PRICES RECEIVED FOR CALIFORNIA FRESH MARKET TOMATOES, 1967-1969

Crop Year	Jan.	Feb.	Mar.	Apr.	May	June	July	Aug.	Sept.	Oct.	Nov.	Dec.
	<u>Dollars per hundredweight</u>											
1967	-	-	-	-	38.40	23.90	17.30	15.30	19.60	24.20	44.20	-
1968	-	-	-	-	39.70	27.50	32.50	41.30	31.60	20.00	27.70	-
1969	-	-	-	-	39.20	24.00	22.80	19.70	21.00	28.50	21.20	26.10

Source: "Agricultural Prices" released January 31, 1970 by the Agricultural Statistics Board, National Agricultural Statistics Service, U. S. Department of Agriculture Washington, D. C.

TABLE 20. CHERRY TOMATO SHIPMENTS, BY STATE AND IMPORTS, BY MONTH, 1969

State	Jan.	Feb.	March	April	May	June	July	Aug.	Sept.	Oct.	Nov.	Dec.	Total
	<u>10,000 pound units</u>												
California													
Southern California a/	-	-	-	-	-	-	-	277	308	365	139	45	1,134
San Joaquin Valley	-	-	-	-	3	677	661	349	186	91	-	-	1,967
Total	-	-	-	-	3	677	661	626	494	456	139	45	3,101
Florida	167	135	342	187	723	411	21	-	-	186	386	274	2,832
Texas	1	-	-	-	6	2	-	-	-	-	19	8	36
Imports													
Baja California	4	2	3	9	205	315	222	6	-	161	119	61	1,107
Mexico	1,151	1,050	767	1,009	556	131	3	-	152	64	350	549	5,782
Total	1,155	1,052	770	1,018	761	446	225	6	152	225	469	610	6,889
Grand Total	1,323	1,187	1,112	1,205	1,493	1,536	907	632	646	867	1,013	937	12,858

Compiled from data provided by the Transportation Reports Section, Fruit and Vegetable Division, Market News Branch, Agricultural Marketing Service, U. S. Department of Agriculture, Washington, D. C.

a/ Southern California shipments from daily tomato flash reports issued by the Federal-State Market News Service office in Los Angeles, California.

TABLE 21. TRUCK ARRIVALS OF CHERRY TOMATOES FROM 23 MAJOR U.S. AND 4 CANADIAN CITIES, 1969

Region and City	Calif.	Ala.	Fla.	Mich.	N.J.	N.C.	Ohio	S.C.	Va.	Canada	Mexico	Other a/	Total
10,000 pound units													
Eastern													
Atlanta, Ga.	32	39	143	1	-	9	-	1	14	-	105	25	369
Balt., Md.-Wash., D.C.	73	-	166	12	6	10	-	4	30	-	140	7	448
Boston, Mass.	227	-	225	9	-	-	-	12	4	4	209	13	703
Buffalo, N.Y.	18	-	16	3	-	-	-	-	-	-	14	9	60
Cincinnati, Oh.	120	3	62	20	-	-	-	1	1	5	264	7	483
Columbia, S.C.	10	-	25	1	-	4	-	-	-	-	11	-	51
Detroit, Mich.	129	-	39	21	-	-	-	-	1	9	163	-	362
Miami, Florida	63	1	134	2	-	-	-	-	-	-	-	6	206
N.Y., N.Y.-Newark, N.J.	126	-	79	105	56	6	18	-	-	-	123	14	527
Philadelphia, Pa.	117	-	87	5	10	-	15	-	-	-	98	4	356
Pittsburgh, Pa.	11	-	39	4	-	-	5	-	1	-	34	4	98
Total	926	43	1,015	183	72	29	23	33	51	18	1,161	89	3,643
Western													
Chicago, Ill.	111	-	56	10	-	-	-	4	-	1	107	5	294
Dallas, Tex.	66	-	26	-	-	-	-	-	-	-	173	13	278
Denver, Colo.	45	-	-	-	-	-	-	-	-	-	84	-	129
Los Angeles, Calif.	449	-	2	-	-	-	-	-	-	-	632	-	1,083
New Orleans, La.	7	-	9	-	-	-	-	-	-	-	7	-	23
S. Louis, Mo.	40	-	36	5	-	-	-	-	-	-	56	3	140
S. Fran.-Oakland, Calif.	210	-	-	-	-	-	-	-	-	-	331	-	541
Seattle-Tacoma, Wash.	221	-	-	-	-	-	-	-	-	-	172	7	400
Total	1,149	-	129	15	-	-	-	4	-	1	1,562	28	2,888
Total U.S.	2,075	43	1,144	198	72	29	23	37	51	19	2,723	117	6,531
Canada													
Montreal, Que.	15	-	37	-	-	-	-	-	-	47	27	4	130
Toronto, Ont.	74	-	130	-	-	-	-	-	-	30	138	8	380
Vancouver, B.C.	15	-	-	-	-	-	-	-	-	-	15	1	31
Winnipeg, Man.	20	-	6	-	-	-	-	-	-	-	11	-	37
Total	124	-	173	-	-	-	-	-	-	77	191	13	578
Total U.S. & Canada	2,199	43	1,317	198	72	29	23	37	51	96	2,914	130	7,109

Compiled from arrival data provided by the Transportation Reports Section, Fruit and Vegetable Division, Market News Branch, Agricultural Marketing Service, U. S. Department of Agriculture, Washington, D.C.
a/ Other origins include the following: Arkansas - 7, Georgia - 18, Illinois - 5, Kentucky - 2, Massachusetts - 2, Maryland - 10, New York - 20, Pennsylvania - 9, Rhode Island - 1, Tennessee - 10, Texas - 16, Washington - 7. Imports: Netherlands - 10, Origins unspecified - 13.

TABLE 22. F.O.B. SHIPPING POINT PRICES FOR CHERRY TOMATOES FROM THE CENTRAL SAN JOAQUIN VALLEY, 1989

Date	12 Pint Trays	Date	12 Pint Trays	Date	12 Pint Trays
	<u>Dollars Per Tray a/</u>		<u>Dollar per Tray a/</u>		<u>Dollar per Tray a/</u>
June 12	3.50-4.00	July 31	4.00	September 11	3.00-5.00
13	3.00-4.00	August 1	4.00	12	3.00-5.00
14	3.00-3.50	2	4.00-5.00	13	3.00-4.00
15	3.00-3.50	3	4.00-5.00	14	3.00-4.00
16	3.00-3.50	4	4.00-5.00	15	3.00-4.00
19	3.00	7	4.00-5.00	18	3.00-4.00
20	3.00	8	4.00-5.00	19	3.00-4.00
21	3.00	9	4.00-5.00	20	3.00-4.00
22	3.00	10	4.00	21	3.00-4.00
23	3.00	11	4.00	22	3.00-4.00
26	3.00	14	3.00-4.00	25	3.00-4.00
27	3.00	15	3.00-4.00	26	4.00-5.00
28	3.00	16	3.00-4.00	27	4.00-5.00
29	3.00	17	3.00-4.00	28	5.00
30	3.00-4.00	18	3.00-4.00	29	5.00
July 3	3.00-4.00	21	3.00	October 2	5.00-6.00
4	Holiday	22	3.00	3	5.00-7.00
5	3.00-4.00	23	3.00	4	5.00-7.00
6	4.00-5.00	24	3.00	5	5.00-7.00
7	4.00-5.00	25	3.00-4.00	6	5.00-7.00
10	5.00-6.00	28	3.00-5.00	9	Holiday
11	5.00-6.00	29	4.00-5.00	10	5.00-6.00
12	5.00	30	4.00-5.00	11	4.00-6.00
13	5.00	31	4.00-5.00	12	4.00-6.00
14	5.00	September 1	4.00-5.00	13	4.00-5.00
17	4.00-5.00	4	Holiday	16	4.00-5.00
18	4.00-5.00	5	4.00-5.00	17	4.00-5.00
19	4.00-5.00	6	4.00-5.00	18	4.00-5.00
20	4.00-5.00	7	3.00-5.00	19	4.00-5.00
21	4.00-5.00	8	3.00-5.00	20	5.00
24	4.00-5.00			23	Supplies insufficient to quote
25	4.00-5.00				
26	4.00				
27	3.00-4.00				Last Report
28	3.00-4.00				

Compiled from f.o.b. shipping point price reports issued daily by the Federal-State Market News Service office in Fresno, California.

a/ Precooling and palletizing extra.

TABLE 23. F.O.B. SHIPPING POINT PRICES FOR CHERRY TOMATOES FROM SOUTHERN CALIFORNIA OR BAJA CROSSINGS THROUGH OTAY MESA, TRI-WEEKLY, 1989

Date	12 Pint Trays 15 Pounds	Date	12 Pint Trays 15 Pounds	Date	12 Pint Trays 15 Pounds
	<u>Dollars per container</u>		<u>Dollars per container</u>		<u>Dollars per container</u>
	14 3.00-4.00	August 14	6.00	October 9	Holiday
	16 3.00-4.00		16 4.00-5.00	11	5.00-7.00
			18 4.00-5.00	13	5.00-6.00
	19 3.00				
	21 3.00		21 4.00	16	6.00-7.00
	23 3.00		23 4.00	18	7.00
			25 4.00	20	7.00-8.00
	26 3.00				
	28 3.00		28 5.00	23	7.00-8.00
	30 3.00-4.00		30 5.00	25	7.00-8.00
		September 1	5.00	27	8.00
July	3 3.00-4.00				
	5 4.00		4 Holiday	30	8.00
	7 4.00-5.00		6 5.00	November 1	8.00-10.00
			8 4.50-5.00	3	10.00
	10 4.00-5.00				
	12 4.00-5.00		11 4.50-5.00	6	10.00-12.00
	14 4.00-5.00		13 4.00-5.00	8	12.00
			15 4.00-5.00	10	Holiday
	17 4.00-5.00				
	19 4.00-5.00		18 4.00-5.00	13	12.00
	21 4.00-5.00		20 4.00-5.00	15	10.00-12.00
			22 4.00-5.00	17	8.00-10.00
	24 4.00-5.00				
	26 4.00-5.00		25 5.00	20	8.00-10.00
	28 4.00-5.00		27 5.00-6.00	22	8.00-10.00
			29 5.00-6.00	24	Holiday
	31 4.00-5.00				
August	2 4.00-5.00	October 2	6.00-7.00	27	8.00-10.00
	4 5.00-7.00		4 6.00-7.00	29	8.00-10.00
			6 6.00-7.00	December 1	8.00-10.00
	7 6.00-7.00				Last Report
	9 6.00-7.00				
	11 6.00				

Compiled from preliminary f.o.b. shipping point price reports issued daily by the Federal-State Market News Service office in Los Angeles, California.

TABLE 24. WHOLESALE MARKET PRICES FOR CALIFORNIA ORIGIN CHERRY TOMATOES IN
LOS ANGELES AND SAN FRANCISCO, BY WEEK, 1989

Wednesday Date		Los Angeles	San Francisco
		Light Pink to Red	Light Red to Red
<u>Dollars per 12 pint tray</u>			
SOUTH DISTRICT-IMPERIAL VALLEY			
May	17	12.00	-
	24	11.00-14.50	-
	31	12.00-14.50	-
CENTRAL DISTRICT-SOUTH DISTRICT			
June	7	8.00-10.00	10.00
	14	5.00-8.00	5.00-6.00
	21	3.00-5.00	5.00-6.00
	28	3.00-5.00	5.00
July	5	4.00-5.00	5.00
	12	5.00-7.00	7.00-7.50
	19	4.00-6.50	5.50-6.50
	26	4.00-5.00	5.00-6.00
August	2	3.00-6.00	5.00-6.00
	9	5.00-7.00	5.00-6.00
	16	5.00-8.00	5.00-6.00
	23	5.00-7.00	5.00-6.00
	30	4.00-6.00	7.00-7.50
September	6	5.00-6.00	7.00-7.50
	13	2.50-5.00	5.00-6.00
	20	4.00-5.00	5.00-6.00
	27	5.00-7.00	5.00-6.00
October	4	6.00-8.00	6.00-7.00
	11	6.00-8.00	6.00-7.00
	18	6.00-7.00	6.00-7.00
	25	8.00-12.00	9.00-11.00
November	1	8.50-11.00	9.00-11.00
	8	12.00-15.00	11.50-13.00
	15	9.00-12.00	15.00-16.00
	22	8.00-11.50	11.00-12.00
	29	9.00-9.50	11.00-12.00
SOUTH DISTRICT			
December	6	10.00-14.00	11.00-12.00
	13	16.00-22.00	a/
	20	16.00-22.00	18.00-22.00
	27	17.00-22.00	20.00-24.00

Compiled from the "Los Angeles Wholesale Fruit and Vegetable Report" and the "San Francisco Wholesale Fruit and Vegetable Report" issued daily by the Federal-State Market News Service office in Los Angeles and San Francisco, California.

a/ Offerings insufficient to quote.