

7-9-74

FILE COPY
Program Analysis
FRUIT BRANCH
F&V - C&MS

Marketing California



NECTARINES

For Fresh Market

1973

FEDERAL-STATE MARKET NEWS SERVICE

United States
Department of Agriculture
Agricultural Marketing Service
Market News Branch

State of California
Department of Food & Agriculture
Division of Marketing Services
Bureau of Market News



P R E F A C E

Information pertinent to the marketing of the 1973 season California fresh market nectarine crop is summarized in this publication. Data includes shipments, unload distribution, shipping point prices, auction sales, wholesale market prices, acreage, production, yield, and crop value. These basic statistical records reflect the supply and demand factors that affect the marketing of nectarines.

New to this report for the 1973 season is a table showing California nectarine production by utilization method and a map listing the 41 U.S. and 5 Canadian unload cities.

F.O.B. shipping point prices for the Central and Southern San Joaquin Valley districts were reported during May 21-September 14, 1973.

Auction sales data shown in this report cover the markets of Chicago, New York, Philadelphia, Detroit, and Pittsburgh. Terminal market prices are shown for the Los Angeles and San Francisco wholesale markets.

All prices shown in this summary, except auction sales, represent the first quoted price or first quoted price range as taken from the daily published market report. Prices in the daily report shown as "mostly", "some", "few", and "occasional" were omitted from this summary, unless otherwise stated.

Preparation of the summary was by Hugh E. Myers, local representative of the Federal-State Market News Service, Fruit and Vegetables, at Sacramento, California.

Data for this summary were compiled generally from various reports of the Federal-State Market News Service, California Crop and Livestock Reporting Service, Sacramento, California, and the Crop Reporting Board, Washington, D.C.

We wish to thank all those individuals who have cooperated in making information available for this review.

CARLOT CONVERSION FACTORS: In 1973 the following carlot conversion factors were in effect for converting nectarine truck shipment and unload package movement data to carlot equivalents. For average rail-car loading data, please refer to page 6 of this summary.

<u>Origin</u>	<u>Carrier</u>	<u>Package Type and Approx. Net Weight</u>	<u>Carlot Factor</u>	
			<u>Pkgs. Per C/L</u>	<u>Pounds Per C/L</u>
Calif.-	Air & Truck Shpts-Unlds	Lugs & Cartons, mstly 2-layer tray pk		
		L.A. & Sanger type 19-29# net, M 22-23#....	1,500	33,000#
		Flats, 1-layer tray pk, 8-10# net, M 9#.....	3,000	(27,000#)
Other States-	Truck Unlds	½ Bushel Cartons, approx. 25# net.....	(1,500)	(37,500#)
		Cartons, 2-layer tray pk, approx 22# net.....	1,500	33,000#
		Cartons, 3-layer tray pk, approx 30# net.....	(1,100)	(33,000#)

Additional copies of this summary may be obtained from:

FEDERAL-STATE MARKET NEWS SERVICE

1220 N Street, Room 216
Sacramento, California 95814

2550 Mariposa Street, Room 3075
Fresno, California 93721

TABLE OF CONTENTS

<u>Table No.</u>	<u>Page No.</u>
MARKETING CALIFORNIA NECTARINES - 1973 Season	
Introduction, Fresh Movement and Movement by Carrier Type	5
Unload Distribution, Rail Car Loading Data and Shipping Point Prices.	6
Eastern Auction Markets & Terminal Market Prices.	7
<u>I. MOVEMENT AND DISTRIBUTION</u>	
Distribution Map, Sources of Movement Figures - 1973.	8-9
Nectarine Producing States and Area Groupings	9
Nectarine Harvest Starting and Movement Period Dates, by States - 1973.	9
1. Total United States Rail and Reported Truck and Air Movement of Nectarines, by States and Foreign Origins, 1969-73.	10
2. Total United States Rail and Reported Truck and Air Movement of Nectarines, by Principal States, by Months, 1973 with Total 1972 Comparisons.	11
3. Total U.S. Rail and Reported Air and Truck Movement of Nectarines from California and Competing States, by Weeks, May 13-Sept. 29, 1973	12
4. Total Unloads of Nectarines by Rail, Air and Truck Combined in 41 U.S. and 5 Canadian Cities by California Origin and Total Other, by Unload Areas and Markets, May-October 1973	13-14
5. Total Unloads of Nectarines Recorded by Rail, Air and Truck in 41 U.S. and 5 Canadian Cities by Selected States and Countries of Origin, 1972-73	15
<u>II. F.O.B. SHIPPING POINT PRICES</u>	
6. Weekly Simple Average F.O.B. Nectarine Prices at Shipping Point in the Central San Joaquin Valley District 1973, with 1971-72 Comparisons.	16
7. California Weekly Nectarine Prices and Movement at Shipping Point, 72s & Larger, by Selected Varieties, by Simple Average, by Season, 1972-73.	17
8. Index of F.O.B. Shipping Point Price Reporting Periods for all Quoted Nectarine Varieties in the Central and Southern San Joaquin Valley, in Lugs 1973.	17
9. F.O.B. Shipping Point Prices of Nectarines in the Central and Southern San Joaquin Valley, by Selected Varieties, by Days 1973	18-19
<u>III. AUCTION PRICES</u>	
10. All Auction California Nectarine Sales and Averages by Containers with Total Tonnage and all Container Averages 1969-73.	20
11. Weighted Average Sales and Volume of California Nectarines Sold at Eastern Auctions, by Variety, by Container, 1969-73	21
12. Index of California Nectarine Sales at Eastern Auctions by Variety, by Market, by Principal Package Type, by Sales Period 1973	21
13. Total Sales Volume and Weighted Averages of California Nectarines at Eastern Auctions, by Auction Market, in 2-Layer Lugs - 1973, with 1972 Comparisons.	22
14. Weighted Average Sales & Volume of California Nectarines Sold at all Eastern Auctions, by Varieties, by Weeks, in Lugs - 1973.	22
<u>IV. WHOLESALE MARKET PRICES</u>	
15. Simple Weekly Average Wholesale Market Prices of San Joaquin Valley Nectarines at Los Angeles, by Selected Varieties 1971-73.	23
16. Simple Weekly Average Wholesale Market Prices of California Nectarines at San Francisco, by Selected Varieties 1971-73.	23
<u>V. ACREAGE, YIELD, PRODUCTION, AND VALUE</u>	
17. California Nectarine Acreage, Production, Yield, Average Grower Return, and Value of Production, 1964-73.	24
18. California Nectarine Grower Estimated Returns, by Utilization Method, 1969-73	24
19. California Nectarine Production by Utilization in Tons, 1969-73	24

MARKETING CALIFORNIA NECTARINES

Summary of 1973 Season

INTRODUCTION: Higher shipping point prices than a year ago generally prevailed during 1973 early and midseasons for California nectarines. Much of the increase in f.o.b. values can be attributed to smaller supplies of many early and midseason varieties, together with a good demand for most offerings. . . . Although total California shipment volume dropped slightly below a year

earlier, movement was the second heaviest of record. . . . Distribution of California nectarines to the eastern and midwestern sections of the U.S. was up compared to a year ago, and in the west and south was down. . . . Sales of California nectarines at eastern auctions averaged the highest of record in 1973. Volume, however, dropped to the smallest quantity sold in 17 years.

FRESH MOVEMENT: More than 7.5 million packages of California nectarines were shipped to market in 1973. This was slightly below the record high of a year earlier and the second heaviest volume of record. In terms of carlots, recorded shipments totaled 5,005 equivalents. During 1973, movement by truck represented 69 percent of the total volume, 4 percent above a year earlier, and the largest percentage share of record. Shipment by rail equaled 1,532 cars, down 10 percent from 1972, but nearly 7 percent above the 5-year 1968-72 average. Total recorded

NECTARINE MOVEMENT, CALIF. & TOTAL U.S. 1969-73

	<u>1969</u>	<u>1970</u>	<u>1971</u>	<u>1972</u>	<u>1973</u>
	Cars and carlot equivalents				
Calif.	3518	3514	3763	4891	5005
Other	85	77	100	75	111
Total U.S.	3603	3591	3863	4966	5116

movement of nectarines from all states equaled 5,090 cars and carlot equivalents, up 2 percent from a year earlier, and the largest volume of record.

CALIFORNIA RECORDED NECTARINE MOVEMENT, BY CARRIER TYPE,
IN LUGS & EQUIVALENT CARLOTS-1973

<u>CARRIER TYPE</u>	<u>SHIPMENTS</u>	
	<u>Lug Basis</u>	<u>C/L Basis 2/</u>
Rail (Lugs based on average loadings in straight cars)	2,338,000	1,558.6
Air	1,200	0.8
Truck	<u>5,169,000</u>	<u>3,446.0</u>
Total Recorded Shipments	7,508,200	5,005.4
Total Producer Packout-Lug basis <u>1/</u>	7,508,631	5,005.7

1/ Represents CTFA packout of all package types converted to lug basis.

2/ Carlot basis by rail, air, and truck - 1,500 lugs per carlot.

UNLOAD DISTRIBUTION: Unloads of California nectarines by combined rail, air, and truck at the nation's major cities totaled 3,026 carlots, 1 percent above a year earlier, and 19 percent above the 5-year 1968-72 average. Distribution by area compared to a year earlier was up slightly in the east due to larger quantities reported at New York city and Buffalo. Volume unloaded in the midwest was larger than a year earlier with nearly all cities reporting moderate increases. Although several cities in the south reported slight increases in unload quan-

tities, total volume for the area was below a year earlier. In the west, volume was below the level of 1972 in all cities except San Francisco-Oakland. Distribution into Canada was above a year earlier with the largest percentage increase recorded at Toronto. The eastern part of the United States continued to be the major out-of-state distribution area for California nectarines during 1973 with over 40 percent of the total volume. New York city led the nation with 636 carlots, followed by Los Angeles with 465.

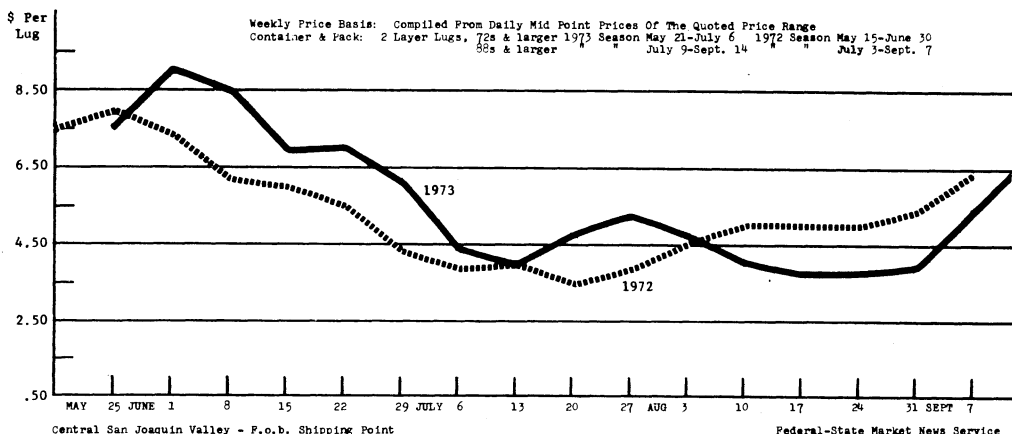
RAIL CAR LOADING DATA: The average rail car load of California nectarines was equivalent to 1,600 lugs during 1973. This was slightly above a year earlier when the average was 1,555 lugs. Average net product weight for 2-layer lug container loadings was estimated at 35,200 pounds.

This was equivalent to 17.6 tons per carload. Most shipments were in mechanically refrigerated cars and represented 58 percent of the movement. Shipments by piggyback van took a smaller share of the total volume, down 11 percent from a year earlier.

F.O.B. SHIPPING POINT PRICES:

Sales of California nectarines at shipping point averaged above a year earlier during early and midseason, and below during the greater part of late season. Many early season and most midseason nectarine varieties yielded lighter crops of fruit in 1973 than a year ago. Supplies were especially heavy during the late season period.

NECTARINE WEEKLY PRICES - FOB SHIPPING POINT 1973 & 1972



EARLY SEASON PRICES: (May 21-June 29) Demand during 1973 for early season California nectarines was very good and prices at shipping point averaged above to well above a year earlier. All of this happened despite the fact that yields for most

early season varieties were larger than in 1972. For the most part, the price trend for offerings packed 72s and larger ranged from \$7.00-9.00 per 2-layer lug compared to \$6.00-8.00 a year earlier.

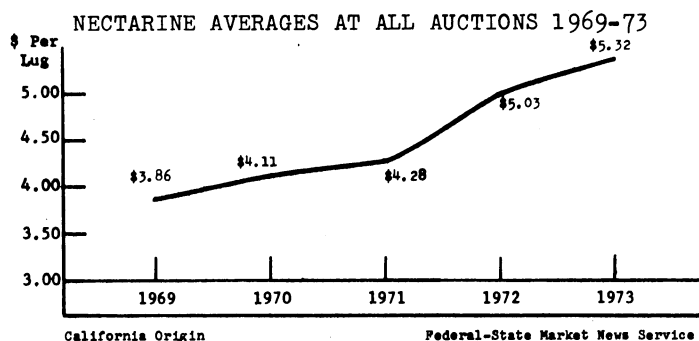
MIDSEASON PRICES: (July 2-27) Most mid-season varieties were in lighter production than a year earlier and prices at shipping point tended to average above

1972 levels. Major variety prices for 2-layer lugs, packed 88s & larger, ranged from \$4.00-5.00 in 1973 and from \$3.25-4.50 a year earlier.

LATE SEASON PRICES: (July 30-Sept. 14) Prices at shipping point averaged below to well below a year earlier during the major part of the late season. Weekly shipment volumes averaged about 100 carlot equivalents above the comparable

weeks a year earlier. For the most part, during 1973, prices ranged from \$3.50-4.50 per 2-layer lug according to size. This was 50 cents to \$1.00 below the f.o.b. values of 1972.

EASTERN AUCTION MARKETS: Sales of California nectarines at eastern auctions averaged the highest of record in 1973. Two-layer lug tray pack offerings averaged \$5.32, 29 cents per lug above a year earlier. Volume, however, dropped to the smallest quantity sold at auction since 1956. Comparative volume during 1973 was based on fewer active auction markets than in previous seasons. Chicago, a leader among the eastern auction markets ten years ago, transacted very few sales with total volume less than a carlot. Among the varieties sold at auction,

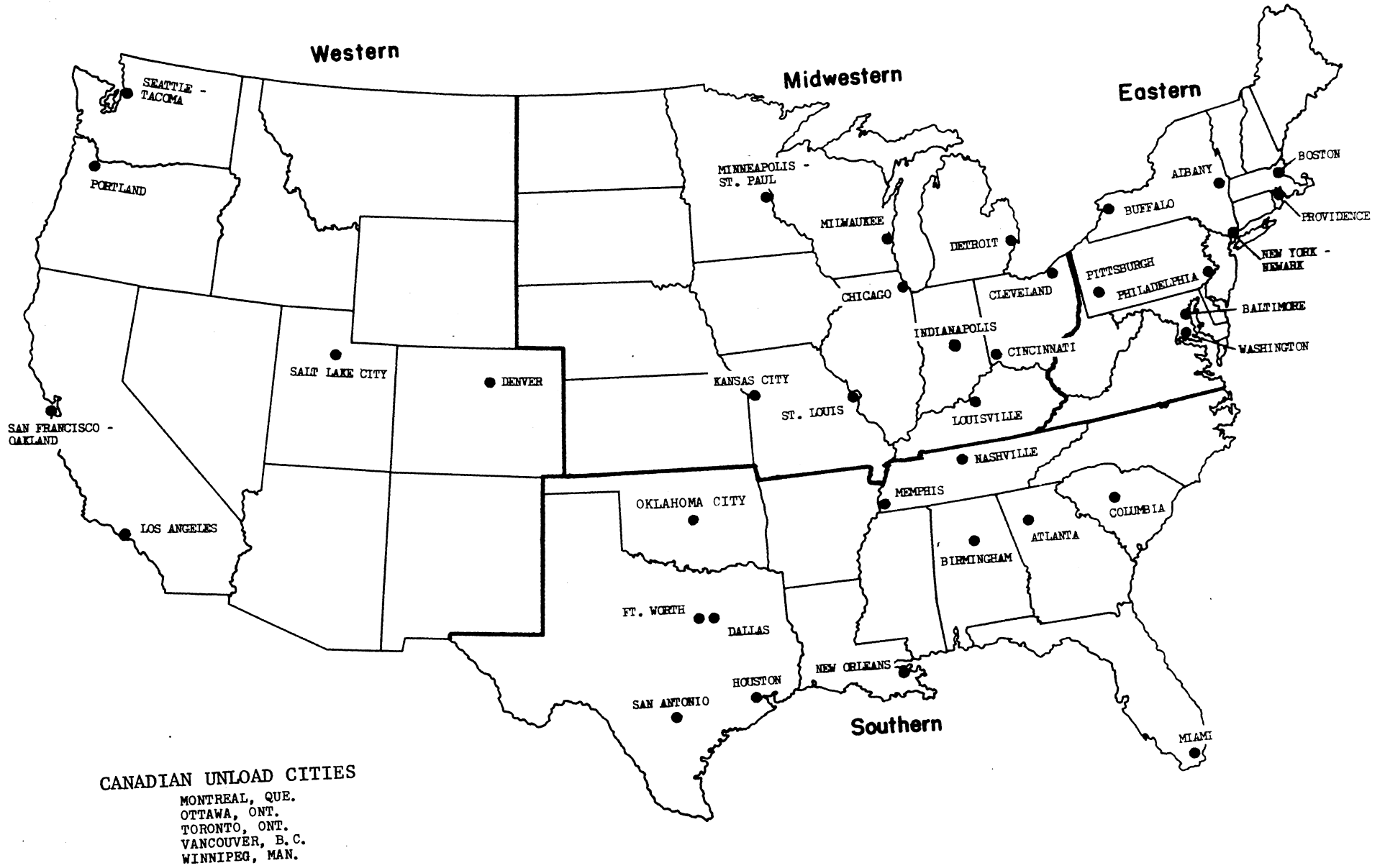


Early Sungrand, Sun Grand, and Gold King were the leaders.

TERMINAL MARKET PRICES: Prices were mixed for early season nectarines at California major wholesale markets, including Los Angeles and San Francisco. Mayred variety was featured by higher prices than a year earlier, while other early offerings were

mixed in value averaging mostly below a year earlier. Most midseason varieties averaged above the values reported during the comparable weeks of 1972, while late season nectarines averaged below a year earlier.

UNITED STATES AREA DISTRIBUTION GROUPS AND 41 UNLOAD CITIES



I. MOVEMENT AND DISTRIBUTION

SOURCES OF NECTARINE RAIL, AIR AND TRUCK MOVEMENT BY STATE AND FOREIGN ORIGIN IN SUMMARY MOVEMENT TABLES - 1973

CALIFORNIA rail movement represents shipments at shipping point and includes all districts. CALIFORNIA truck movement represents shipments recorded at shipping point and represents all districts. For prior years, including 1969-70, shipments included only movement from major districts.

CALIFORNIA air movement represents shipments reported by airlines at San Francisco and Los Angeles airports.

OTHER STATES rail movement represents shipments at shipping point and includes all districts.

ARIZONA truck movement represents interstate shipments.

OTHER STATES truck figures represent unloads in 41 U.S. cities.

FOREIGN ORIGIN boat and air represents unloads in 41 U.S. cities.

Truck figures are not complete for states other than California but represent the best available information.

NECTARINE PRODUCING STATE GEOGRAPHICAL AREAS AS SUMMARIZED IN THIS SUMMARY - TABLES 1, 2, & 3

<u>WESTERN AREA</u>	<u>SOUTHERN AREA</u>	<u>EASTERN AREA</u>	<u>MIDWESTERN AREA</u>
Arizona	Florida	New Jersey	Illinois <u>a/</u>
California	Georgia	New York <u>a/</u>	Michigan <u>a/</u>
Colorado		Pennsylvania	Ohio <u>a/</u>
Idaho <u>a/</u>		Virginia	
Oregon <u>a/</u>		W. Virginia <u>a/</u>	
Washington			
<u>a/</u> No movement reported during 1973 season.			

NECTARINE HARVEST STARTING AND MOVEMENT PERIODS BY U.S. PRODUCING STATES - 1973 (Based on records of reported daily movement in carlot equivalents)

<u>WESTERN AREA</u>	<u>SOUTHERN AREA</u>	<u>EASTERN AREA</u>	<u>MIDWESTERN AREA</u>
Calif. May 15-Sept. 24	Fla. May 14-July 3		
Ariz. June 2-27	Ga. June 6 only		
Wash. July 24-Sept. 24		Va. July 24-Aug. 1	
		Pa. July 30-Sept. 20	
Colo. Aug. 13-Sept. 4		N.J. Aug. 21-Sept. 4	
Idaho <u>a/</u>		W.Va. <u>a/</u>	Ill. <u>a/</u>
Oreg. <u>a/</u>		N.Y. <u>a/</u>	Mich. <u>a/</u>
			Ohio <u>a/</u>

a/ No movement reported during 1973 season.

REASONS FOR DIFFERENCES IN SEASONAL TRUCK TOTALS IN TABLES 1, 2, & 3

Monthly movement is compiled from the sum of daily figures in tenths of a car and converted to the nearest carlot equivalent at the end of each month. Whereas, weekly movement is compiled from daily figures in tenths of a car and converted to the nearest carlot equivalent each day.

TABLE 1. TOTAL UNITED STATES RAIL AND REPORTED TRUCK AND AIR MOVEMENT OF NECTARINES,
BY STATES AND FOREIGN ORIGINS, 1969-73 a/

Origin	1969	1970	1971	1972	1973
- Cars and Carlot Equivalents -					
<u>CALIFORNIA - Shipments</u>					
Rail	1522	1391	1096	1699	1532
Air	1	10	6	4	1
Truck	<u>1995</u>	<u>2113</u>	<u>2661</u>	<u>3188</u>	<u>3446</u>
TOTAL RPTD CALIFORNIA MVMT	3518	3514	3763	4891	4979
<u>OTHER WESTERN</u>					
Arizona - Shipments					
Rail	-	-	-	-	3
Truck	-	-	-	4	24
Total	-	-	-	4	27
Colorado -Truck	1	1	1	-	2
Idaho -Rail	2	-	2	-	-
-Truck	1	-	-	-	-
Total	3	-	2	-	-
Oregon -Truck	2	-	1	-	-
Washington -Truck	1	15	23	22	43
TOTAL WESTERN	3525	3530	3790	4917	5051
<u>SOUTHERN</u>					
Florida -Truck	9	28	8	7	13
Georgia -Truck	-	-	-	-	1
TOTAL SOUTHERN	9	28	8	7	14
<u>EASTERN</u>					
New Jersey -Truck	7	10	10	2	3
New York -Truck	2	-	1	-	-
Pennsylvania-Truck	48	19	41	39	20
Virginia -Truck	-	-	-	-	2
W. Virginia -Truck	-	-	-	1	-
TOTAL EASTERN	57	29	52	42	25
<u>MIDWESTERN</u>					
Illinois -Truck	1	2	4	-	-
Michigan -Truck	11	2	9	-	-
Ohio -Truck	-	-	-	-	-
TOTAL MIDWESTERN	12	4	13	-	-
TOTAL U.S. RAIL	1524	1391	1098	1699	1535
TOTAL REPORTED AIR	1	10	6	4	1
TOTAL REPORTED TRUCK	<u>2078</u>	<u>2190</u>	<u>2759</u>	<u>3263</u>	<u>3554</u>
TOTAL REPORTED NECTARINE MOVEMENT	3603	3591	3863	4966	5090
<u>IMPORTS</u>					
Chile-Boat & Air Unloads b/	84	136	94	21	3
New Zealand-Boat & Air Unlds b/	-	-	1	-	-

Compiled from reports received from the Fruit & Vegetable Division, AMS, U.S.D.A., Washington, D.C. and records of the Federal-State Market News Service, Sacramento, California. a/ All rail, air, & truck are final. Truck for states other than California and Arizona represents unloads in 41 U.S. cities. b/ Compiled from unloads by boat and air in 41 U.S. cities.

TABLE 2. TOTAL UNITED STATES RAIL AND REPORTED TRUCK AND AIR MOVEMENT OF NECTARINES,
BY PRINCIPAL STATES, BY MONTHS, 1973 WITH TOTAL 1972 COMPARISONS a/

State & District	May	June	July	August	September	October	Total	
							1973	1972
- Cars and Carlot Equivalents -								
<u>CALIFORNIA - Shipments</u>								
Rail	-	151	481	222	35	-	889	802
Rail-truck <u>b/</u>	-	154	290	181	18	-	643	897
Total	-	305	771	403	53	-	1532	1699
Air	-	1	-	-	-	-	1	4
Truck	62	864	1323	1026	171	-	3446	3188
TOTAL CALIFORNIA NECTARINE MVMT.	62	1170	2094	1429	224	-	4979	4891
<u>OTHER WESTERN</u>								
Arizona Shipments								
Rail	-	3	-	-	-	-	3	-
Truck	-	24	-	-	-	-	24	4
Total	-	27	-	-	-	-	27	4
Colorado-Truck	-	-	-	1	1	-	2	-
Washington-Truck	-	-	2	15	25	1	43	22
TOTAL WESTERN	62	1197	2096	1445	250	1	5051	4917
<u>SOUTHERN</u>								
Florida -Truck	10	2	1	-	-	-	13	7
Georgia -Truck	-	1	-	-	-	-	1	-
TOTAL SOUTHERN	10	3	1	-	-	-	14	7
<u>EASTERN</u>								
New Jersey-Truck	-	-	-	2	1	-	3	2
Pennsylvania-Truck	-	-	2	11	7	-	20	39
Virginia-Truck	-	-	1	1	-	-	2	-
West Virginia-Truck	-	-	-	-	-	-	-	1
TOTAL EASTERN	-	-	3	14	8	-	25	42
<u>MIDWESTERN-Truck</u>	-	-	-	-	-	-	-	-
TOTAL U.S. RAIL	-	308	771	403	53	-	1535	1699
TOTAL REPORTED AIR	-	1	-	-	-	-	1	4
TOTAL REPORTED TRUCK	72	891	1329	1056	205	1	3554	3263
TOTAL REPORTED NECTARINE MVMT.	72	1200	2100	1459	258	1	5090	4966

<u>California Intrastate Truck Unloads</u> (Included in California shipments reported at shipping point)								
Los Angeles	5	89	184	150	40	-	468	498
San Fran.-Oakland	2	39	90	70	24	c/	225	205
Total	7	128	274	220	64	-	693	703

Compiled from reports received from Fruit & Vegetable Division, AMS, U.S.D.A., Washington, D.C. and records of the Federal-State Market News Service, Sacramento, California. a/ Rail, air, and truck figures are final. Truck for states other than California and Arizona represents unloads in 41 U.S. cities. b/ Represents piggyback vans. c/ Less than 0.5 carlot equivalent.

TABLE 3. TOTAL U.S. RAIL AND REPORTED AIR AND TRUCK MOVEMENT OF NECTARINES FROM CALIFORNIA AND COMPETING STATES, BY WEEKS, MAY 13-SEPTEMBER 29, 1973 a/

State & District	May 13-19	May 20-26	May 27 June 2	June 3-9	June 10-16	June 17-23	June 24-30	July 1-7	July 8-14	July 15-21	July 22-28	July 29- Aug. 4	Aug. 5-11	Aug. 12-18	Aug. 19-25	Aug. 26 Sept. 1	Sept. 2-8	Sept. 9-15	Sept. 16-22	Sept. 23-29	1973 Total May 13- Sept. 29
<u>Cars & Carlot Equivalents</u>																					
CALIFORNIA - Shipments																					
Rail	-	-	2	13	122	56	112	211	225	153	130	122	122	93	73	52	36	7	3	-	1532
Air	-	-	b/	1	-	-	-	-	-	-	-	-	-	-	-	-	-	-	-	-	1
Truck	7	17	53	140	207	220	282	288	334	337	270	244	247	244	236	162	105	39	12	2	3446
TOTAL REPORTED CALIF. NECTARINE MOVEMENT	7	17	55	154	329	276	394	499	559	490	400	366	369	337	309	214	141	46	15	2	4979
OTHER WESTERN																					
Arizona -Rail c/	-	-	-	-	1	2	-	-	-	-	-	-	-	-	-	-	-	-	-	-	3
-Truck c/	-	-	1	7	8	5	3	-	-	-	-	-	-	-	-	-	-	-	-	-	24
Total Ariz Shpts	-	-	1	7	9	7	3	-	-	-	-	-	-	-	-	-	-	-	-	-	27
Colorado -Truck	-	-	-	-	-	-	-	-	-	-	-	-	-	1	-	1	-	-	-	-	2
Washington-Truck	-	-	-	-	-	-	-	-	-	1	1	3	3	4	6	7	9	7	2	-	43
TOTAL WESTERN	7	17	56	161	338	283	397	499	559	490	401	367	372	341	313	221	148	55	22	4	5051
SOUTHERN																					
Florida -Truck	3	5	4	-	-	2	-	1	-	-	-	-	-	-	-	-	-	-	-	-	15
Georgia -Truck	-	-	-	1	-	-	-	-	-	-	-	-	-	-	-	-	-	-	-	-	1
TOTAL SOUTHERN	3	5	4	1	-	2	-	1	-	-	-	-	-	-	-	-	-	-	-	-	16
EASTERN																					
New Jersey-Truck	-	-	-	-	-	-	-	-	-	-	-	3	2	3	1	1	1	-	-	-	2
Pennsylvania-Truck	-	-	-	-	-	-	-	-	-	-	-	-	2	3	2	3	4	1	2	-	20
Virginia -Truck	-	-	-	-	-	-	-	-	-	1	1	-	-	-	-	-	-	-	-	-	2
TOTAL EASTERN	-	-	-	-	-	-	-	-	-	-	1	4	2	3	3	3	5	1	2	-	24
MIDWESTERN -Truck	-	-	-	-	-	-	-	-	-	-	-	-	-	-	-	-	-	-	-	-	-
TOTAL U.S. RAIL	-	-	2	13	123	58	112	211	225	153	130	122	122	93	73	52	36	7	3	-	1535
TOTAL REPORTED AIR	-	-	b/	1	-	-	-	-	-	-	-	-	-	-	-	-	-	-	-	-	1
TOTAL REPORTED TRUCK	10	22	58	148	215	227	285	289	334	337	272	249	252	251	243	172	117	49	21	4	3555
TOTAL REPORTED NECTARINE MOVEMENT	10	22	60	162	338	285	397	500	559	490	402	371	374	344	316	224	153	56	24	4	5091
California Intrastate Truck Unloads (Included in above California truck shipments)																					
Los Angeles	b/	2	4	9	27	20	32	44	47	43	30	35	39	36	32	28	21	8	9	2	468
San Fran-Oakland	b/	b/	2	4	9	12	14	20	25	20	19	18	16	12	15	15	14	7	2	1	225
Total	-	2	6	13	36	32	46	64	72	63	49	53	55	48	47	43	35	15	11	3	693

Compiled from reports received from Fruit and Vegetable Division, AMS, U.S.D.A., Washington, D.C. and records of the Federal-State Market News Service, Sacramento, California. a/ Rail, air and truck are final. Truck for states other than California and Arizona represent unloads in 41 U.S. cities unless otherwise stated. b/ Less than 0.5 carlot equivalent. c/ Arizona rail and truck are from shipping point.

TABLE 4.

TOTAL UNLOADS OF NECTARINES BY RAIL, AIR & TRUCK COMBINED IN 41 U.S. AND 5 CANADIAN CITIES BY CALIFORNIA ORIGIN AND TOTAL OTHER, BY UNLOAD AREAS AND MARKETS, MAY-OCTOBER 1973

Areas and Markets	MAY			JUNE			JULY		
	California	Other	Total	California	Other	Total	California	Other	Total
Cars and carlot equivalents									
EASTERN									
Albany, N.Y.	-	-	-	3	-	3	6	-	6
Baltimore, Md.	-	-	-	6	-	6	13	-	13
Boston, Mass.	1	-	1	26	-	26	51	-	51
Buffalo, N.Y.	1	-	1	11	-	11	19	-	19
New York, N.Y.-Newark, N.J.	2	4	6	93	2	95	270	1	271
Philadelphia, Pa.	3	-	3	35	-	35	83	-	83
Pittsburgh, Pa.	-	-	-	14	-	14	34	2	36
Providence, R.I.	-	-	-	1	-	1	4	-	4
Washington, D.C.	-	-	-	8	-	8	28	1	29
Total	7	4	11	197	2	199	508	4	512
MIDWESTERN									
Chicago, Ill.	3	1	4	44	1	45	115	-	115
Cincinnati, Ohio	1	-	1	12	-	12	23	-	23
Cleveland, Ohio	-	-	-	19	1	20	39	-	39
Detroit, Mich.	-	3	3	43	-	43	70	-	70
Indianapolis, Ind.	-	-	-	3	-	3	7	-	7
Kansas City, Mo.	1	-	1	16	-	16	11	-	11
Louisville, Ky.	-	-	-	3	-	3	6	-	6
Milwaukee, Wis.	-	-	-	9	-	9	16	-	16
Mpls.-St. Paul, Minn.	1	-	1	6	-	6	16	-	16
St. Louis, Mo.	1	1	2	11	-	11	24	-	24
Total	7	5	12	166	2	168	327	-	327
SOUTHERN									
Atlanta, Ga.	-	1	1	4	1	5	6	-	6
Birmingham, Ala.	-	-	-	1	-	1	3	-	3
Columbia, S.C.	-	-	-	1	-	1	1	-	1
Dallas, Texas	2	-	2	6	-	6	18	-	18
Ft. Worth, Texas	-	-	-	1	-	1	3	-	3
Houston, Texas	1	-	1	4	-	4	9	-	9
Memphis, Tenn.	-	-	-	1	-	1	3	-	3
Miami, Florida	-	-	-	8	-	8	19	-	19
Nashville, Tenn.	-	-	-	-	-	-	-	-	-
New Orleans, La.	-	-	-	3	-	3	11	-	11
Oklahoma, City, Okla.	1	-	1	2	-	2	6	-	6
San Antonio, Texas	-	-	-	-	-	-	2	-	2
Total	4	1	5	31	1	32	81	-	81
WESTERN									
Denver, Colo.	3	-	3	11	-	11	17	-	17
Los Angeles, Calif.	5	-	5	89	1	90	184	-	184
Portland, Ore.	-	-	-	6	-	6	10	1	11
Salt Lake City, Utah	-	-	-	-	-	-	7	-	7
San Francisco-Oakland, Calif.	2	-	2	38	-	38	90	-	90
Seattle-Tacoma, Wash.	1	-	1	13	-	13	21	1	22
Total	11	-	11	157	1	158	329	2	331
TOTAL U.S.	29	10	39	551	6	557	1245	6	1251
CANADA UNLOADS									
Montreal, Que.	-	-	-	20	-	20	60	-	60
Ottawa, Ont.	-	-	-	4	-	4	8	-	8
Toronto, Ont.	1	-	1	41	-	41	91	-	91
Vancouver, B.C.	1	-	1	9	-	9	22	-	22
Winnipeg, Man.	-	-	-	6	-	6	16	-	16
Total Canada	2	-	2	80	-	80	197	-	197
GRAND TOTAL U.S. & CANADA	31	10	41	631	6	637	1442	6	1448

(Continued)

TABLE 4. TOTAL UNLOADS OF NECTARINES BY RAIL, AIR & TRUCK COMBINED IN 41 U.S. AND 5 CANADIAN CITIES BY CALIFORNIA ORIGIN AND TOTAL OTHER, BY UNLOAD AREAS AND MARKETS, MAY-OCTOBER 1973 (Continued)

Areas and Markets	AUGUST			SEPTEMBER			OCTOBER			GRAND TOTAL		
	Calif.	Other	Total	Calif.	Other	Total	Calif.	Other	Total	Calif.	Other	Total
<u>Cars and carlot equivalents</u>												
EASTERN												
Albany, N.Y.	5	-	5	3	-	3	-	-	-	17	-	17
Baltimore, Md.	6	-	6	4	-	4	-	-	-	29	-	29
Boston, Mass.	41	-	41	13	-	13	-	-	-	132	-	132
Buffalo, N.Y.	13	-	13	3	-	3	-	-	-	47	-	47
New York-Newark, N.J.	193	1	194	78	1	79	-	-	-	636	9	645
Philadelphia, Pa.	57	2	59	14	1	15	1	-	1	193	3	196
Pittsburgh, Pa.	11	8	19	1	5	6	-	1	1	60	16	76
Providence, R.I.	3	-	3	-	-	-	-	-	-	8	-	8
Washington, D.C.	21	1	22	12	-	12	-	-	-	69	2	71
Total	350	12	362	128	7	135	1	1	2	1191	30	1221
MIDWESTERN												
Chicago, Ill.	63	-	63	14	5	19	-	-	-	239	7	246
Cincinnati, Ohio	10	-	10	6	-	6	-	-	-	52	-	52
Cleveland, Ohio	19	3	22	6	2	8	-	-	-	83	6	89
Detroit, Mich.	47	1	48	13	6	19	-	-	-	173	10	183
Indianapolis, Ind.	5	-	5	1	-	1	-	-	-	16	-	16
Kansas City, Mo.	16	-	16	6	-	6	-	-	-	50	-	50
Louisville, Ky.	6	-	6	2	-	2	-	-	-	17	-	17
Milwaukee, Wis.	9	-	9	3	1	4	-	-	-	37	1	38
Mpls.-St. Paul, Minn.	10	-	10	2	-	2	-	-	-	35	-	35
St. Louis, Mo.	16	-	16	7	1	8	-	-	-	59	2	61
Total	201	4	205	60	15	75	-	-	-	761	26	787
SOUTHERN												
Atlanta, Ga.	5	-	5	2	-	2	-	-	-	17	2	19
Birmingham, Ala.	4	-	4	2	-	2	-	-	-	10	-	10
Columbia, S.C.	-	-	-	1	-	1	-	-	-	3	-	3
Dallas, Texas	23	-	23	11	-	11	-	-	-	60	-	60
Ft. Worth, Texas	6	-	6	4	-	4	1	-	1	15	-	15
Houston, Texas	9	1	10	4	-	4	-	-	-	27	1	28
Memphis, Tenn.	2	-	2	2	-	2	-	-	-	8	-	8
Miami, Florida	16	-	16	8	1	9	-	-	-	51	1	52
Nashville, Tenn.	1	-	1	-	-	-	-	-	-	1	-	1
New Orleans, La.	9	-	9	6	-	6	-	-	-	29	-	29
Oklahoma City, Okla.	5	-	5	3	-	3	-	-	-	17	-	17
San Antonio, Texas	3	-	3	-	-	-	-	-	-	5	-	5
Total	83	1	84	43	1	44	1	-	1	243	4	247
WESTERN												
Denver, Colo.	14	-	14	7	1	8	-	-	-	52	1	53
Los Angeles, Calif.	148	1	149	39	1	40	-	-	-	465	3	468
Portland, Ore.	6	4	10	1	1	2	-	-	-	23	6	29
Salt Lake City, Utah	7	-	7	1	-	1	-	-	-	15	-	15
San Francisco-Oakland, Calif.	69	-	69	24	-	24	-	-	-	223	-	223
Seattle-Tacoma, Wash.	16	8	24	2	8	10	-	-	-	53	17	70
Total	260	13	273	74	11	85	-	-	-	831	27	858
TOTAL U.S.	894	30	924	305	34	339	2	1	3	3026	87	3113
CANADA UNLOADS												
Montreal, Que.	54	1	55	21	-	21	-	-	-	155	1	156
Ottawa, Ont.	7	1	8	2	-	2	-	-	-	21	1	22
Toronto, Ont.	59	-	59	12	-	12	-	-	-	204	-	204
Vancouver, B.C.	20	-	20	4	1	5	-	-	-	56	1	57
Winnipeg, Man.	15	-	15	6	-	6	-	-	-	43	-	43
Total Canada	155	2	157	45	1	46	-	-	-	479	3	482
GRAND TOTAL U.S. & CANADA	1049	32	1081	350	35	385	2	1	3	3505	90	3595

Compiled from reports received from the Fruit and Vegetable Division, AMS, USDA, Market News Branch, Washington, D.C.
 a/ "Other" includes May Fla. 10; June Fla. 2, Ariz. 3, Ga. 1; July Fla. 1, Pa. 2, Wash. 2, Va. 1; August N.J. 3, Pa. 11, Wash. 15, Colo. 1, Va. 1, Canada 1; September N.J. 1, Colo. 1, Pa. 7, Wash. 26; October Wash. 1.

TABLE 5.

TOTAL UNLOADS OF NECTARINES RECORDED BY RAIL, AIR AND TRUCK IN 41 U.S. AND 5 CANADIAN CITIES
BY SELECTED STATES AND COUNTRIES OF ORIGIN, 1972-73

Areas and Markets	California		Washington		Florida		New Jersey		Pennsylvania		Chile		Other a/		Total	
	1972	1973	1972	1973	1972	1973	1972	1973	1972	1973	1972	1973	1972	1973	1972	1973
Cars and carlot equivalents																
EASTERN																
Albany, N.Y.	22	17	-	-	-	-	-	-	-	-	-	-	-	-	22	17
Baltimore, Md.	37	29	-	-	-	-	-	-	3	-	-	-	-	-	40	29
Boston, Mass.	132	132	-	-	-	-	-	-	-	-	2	1	-	-	134	133
Buffalo, N.Y.	38	47	-	-	-	-	-	-	-	-	-	-	-	-	38	47
N.Y.-Newark, N.J.	589	636	-	-	3	5	1	-	8	2	21	3	-	2	622	648
Philadelphia, Pa.	215	193	-	2	-	-	1	1	3	-	-	-	-	-	219	196
Pittsburgh, Pa.	74	60	-	2	-	-	-	-	20	14	-	-	1	-	95	76
Providence, R.I.	2	8	-	-	-	-	-	-	-	-	-	-	-	-	2	8
Washington, D.C.	70	69	-	-	-	-	-	-	-	-	-	-	-	2	70	71
Total	1179	1191	-	4	3	5	2	1	34	16	23	4	1	4	1242	1225
MIDWESTERN																
Chicago, Ill.	228	239	3	5	1	2	-	-	-	-	3	1	-	-	235	247
Cincinnati, Ohio	44	52	-	-	-	-	-	-	-	-	-	-	-	-	44	52
Cleveland, Ohio	86	83	1	-	-	1	-	1	5	4	-	-	-	-	92	89
Detroit, Mich.	147	173	2	7	-	3	-	-	-	-	2	-	-	-	151	183
Indianapolis, Ind.	14	16	-	-	-	-	-	-	-	-	-	-	-	-	14	16
Kansas City, Mo.	51	50	-	-	-	-	-	-	-	-	-	-	-	-	51	50
Louisville, Ky.	11	17	-	-	-	-	-	-	-	-	-	-	-	-	11	17
Milwaukee, Wis.	28	37	-	1	-	-	-	-	-	-	-	-	-	-	28	38
Mpls-St. Paul, Minn.	32	35	-	-	-	-	-	-	-	-	-	-	1	-	33	35
St. Louis, Mo.	55	59	-	1	-	1	-	-	-	-	-	-	-	-	55	61
Total	697	761	6	14	1	7	-	1	5	4	5	1	1	-	714	788
SOUTHERN																
Atlanta, Ga.	19	17	-	-	1	1	-	-	-	-	-	-	-	1	20	19
Birmingham, Ala.	19	10	-	-	-	-	-	-	-	-	-	-	-	-	19	10
Columbia, S.C.	2	3	-	-	-	-	-	-	-	-	-	-	-	-	2	3
Dallas, Texas	55	60	-	-	-	-	-	-	-	-	-	-	-	-	55	60
Ft. Worth, Texas	11	15	-	-	-	-	-	-	-	-	-	-	-	-	11	15
Houston, Texas	35	27	-	-	-	-	-	-	-	-	-	-	-	1	35	28
Memphis, Tenn.	7	8	-	-	-	-	-	-	-	-	-	-	-	-	7	8
Miami, Florida	44	51	-	-	2	-	-	1	-	-	-	-	-	-	46	52
Nashville, Tenn.	2	1	-	-	-	-	-	-	-	-	-	-	-	-	2	1
New Orleans, La.	25	29	-	-	-	-	-	-	-	-	-	-	-	-	25	29
Oklahoma City, Okla.	17	17	-	-	-	-	-	-	-	-	-	-	-	-	17	17
San Antonio, Texas	9	5	-	-	-	-	-	-	-	-	-	-	-	-	9	5
Total	245	243	-	-	3	1	-	1	-	-	-	-	-	2	248	247
WESTERN																
Denver, Colo.	54	52	-	-	-	-	-	-	-	-	-	-	-	1	54	53
Los Angeles, Calif.	498	465	2	2	-	-	-	-	-	-	1	-	1	1	502	468
Portland, Ore.	36	23	1	6	-	-	-	-	-	-	-	-	-	-	37	29
Salt Lake City, Utah	25	15	-	-	-	-	-	-	-	-	-	-	-	-	25	15
San Fran-Oakland, Calif.	205	223	-	-	-	-	-	-	-	-	-	-	-	-	205	223
Seattle-Tacoma, Wash.	56	53	13	17	-	-	-	-	-	-	-	-	-	-	69	70
Total	874	831	16	25	-	-	-	-	-	-	1	-	1	2	892	858
TOTAL U.S.	2994	3026	22	43	7	13	2	3	39	20	29	5	3	8	3096	3118
CANADA UNLOADS																
Montreal, Que.	150	155	-	-	1	-	-	1	-	-	-	1	2	-	153	157
Ottawa, Ont.	16	21	-	-	-	-	-	-	-	-	-	-	2	1	18	22
Toronto, Ont.	174	204	-	-	-	-	-	-	-	-	4	2	-	-	178	206
Vancouver, B.C.	56	56	-	1	-	-	-	-	-	-	-	-	-	-	56	57
Winnipeg, Man.	35	43	-	-	-	-	-	-	-	-	-	-	-	-	35	43
Total Canada	431	479	-	1	1	-	-	1	-	-	4	3	4	1	440	485
GRAND TTL. U.S. & CANADA	3425	3505	22	44	8	13	2	4	39	20	33	8	7	9	3536	3603

Compiled from reports received from the Fruit and Vegetable Division, AMS, USDA, Market News Branch, Washington, D.C.
a/ "Other" for 1973 included Colo. 2, Ariz. 3, Ga. 1, Va. 2, Canada 1; 1972 included Ariz. 4, W. Va. 1, Canada 2.

II. F.O.B. SHIPPING POINT PRICES

TABLE 6. WEEKLY SIMPLE AVERAGE F.O.B. NECTARINE PRICES AT SHIPPING POINT IN THE CENTRAL SAN JOAQUIN VALLEY DISTRICT 1973, WITH 1971-72 COMPARISONS

(Weekly Simple Average Price Basis: Computed from the mid-point of the daily price ranges during the week for grades or stock of generally good quality and condition)

- Dollars per 2-layer lug -

	MAYRED			ARMKING			MAY GRAND			JUNE GRAND		
	1971	1972	1973	1971	1972	1973	1971	1972	1973	1971	1972	1973
	<u>96s</u>	<u>108-112s</u>			<u>80-88s</u>			<u>88s and Larger</u>			<u>80-88s</u>	
May 19	-	\$7.00	-	-	-	-	-	-	-	-	-	-
26	-	-	\$6.88	-	\$8.50	-	-	-	-	-	-	-
June 2	\$7.50	-	-	-	7.00	\$8.50	\$8.00	\$6.69	-	-	\$6.38	-
9	7.50	-	-	\$7.58	-	7.90	6.20	5.10	\$7.90	-	5.00	-
16	-	-	-	-	-	-	6.00	5.00	6.00	\$6.20	5.00	\$6.00
23	-	-	-	-	-	-	-	-	6.00	6.00	-	6.00
30	-	-	-	-	-	-	-	-	5.38	-	-	-
	RED JUNE			EARLY SUNGRAND			RED GRAND					
	1971	1972	1973	1971	1972	1973	1971	1972	1973	1971	1972	1973
		<u>80-88s</u>			<u>80-88s</u>			<u>72s and Larger</u>		<u>88 & L</u>	<u>72 & L</u>	<u>88 & L</u>
June 2	-	\$6.69	-	-	-	-	-	-	-	-	-	-
9	\$8.00	5.10	\$7.75	-	\$5.10	-	-	\$6.20	-	-	-	-
16	6.20	5.00	6.00	-	5.00	\$6.00	-	6.00	\$7.00	-	-	-
23	6.00	-	6.00	\$6.00	4.80	6.00	\$7.00	5.60	7.00	-	-	-
30	-	-	6.00*	4.50	3.95	5.20	5.00	4.43	5.90	-	-	-
July 7	-	-	-	4.50	3.50	4.06	5.00	3.84	4.44	-	-	-
14	-	-	-	4.50	-	3.55	4.95	-	4.12	-	\$3.50	\$3.50
21	-	-	-	4.25	-	-	4.75	-	4.50	-	3.50	4.70
28	-	-	-	-	-	-	-	-	-	\$4.05	3.95	5.00
Aug. 4	-	-	-	-	-	-	-	-	-	3.78	4.50	4.80
11	-	-	-	-	-	-	-	-	-	3.42	-	4.34
	SUN GRAND			LE GRAND			LATE LE GRAND					
	1971	1972	1973	1971	1972	1973	1971	1972	1973	1971	1972	1973
		<u>80-88s</u>			<u>72s and Larger</u>			<u>88s and Larger</u>			<u>88s and Larger</u>	
June 23	-	\$5.00*	-	-	\$6.00	-	-	-	-	-	-	-
30	-	3.94	-	-	4.38	-	-	-	-	-	-	-
July 7	-	3.50	\$4.08	-	3.91	\$4.41	-	-	-	-	-	-
14	\$4.50	3.25	3.55	4.94	3.63	4.12	-	-	-	-	-	-
21	4.10	3.12	4.55	4.35	3.50	4.50	-	\$3.18	\$5.00	-	\$3.50	-
28	4.00	-	5.00	4.05	-	-	-	3.48	4.60	-	3.95	\$5.00
Aug. 4	-	-	5.00*	-	-	-	\$3.25	4.00	4.25	\$3.58	4.50	4.75
11	-	-	-	-	-	-	2.88	-	3.69	3.35	5.00	3.95
18	-	-	-	-	-	-	-	-	-	2.84	5.00	3.75
25	-	-	-	-	-	-	-	-	-	2.76	-	3.75
Sept. 1	-	-	-	-	-	-	-	-	-	2.90	-	3.75
8	-	-	-	-	-	-	-	-	-	2.90	-	-
	GOLD KING			REGAL GRAND			AUTUMN GRAND			SEPTEMBER GRAND		
	1971	1972	1973	1971	1972	1973	1971	1972	1973	1971	1972	1973
		<u>88s and Larger</u>		<u>All Szs.</u>	<u>88s & Lgr.</u>			<u>88s and Larger</u>		<u>All Szs.</u>	<u>88s & Lgr.</u>	
Aug. 4	-	\$5.00*	-	-	\$5.00*	-	-	-	-	-	-	-
11	-	5.00	\$4.17	-	5.00	\$4.12	-	-	-	-	-	-
18	-	5.00	3.80	-	5.00	3.80	No Quotations	\$3.80	-	-	\$5.00*	-
25	\$3.00	5.00	3.75	\$3.75	5.00	3.75	Reported in	3.75	-	3.00	5.00	\$3.75
Sept. 1	3.00	-	3.75	3.22	-	3.75	Reported in	3.80	\$3.00	3.00	5.25	3.80
8	3.00	-	5.25	3.10	-	-	Reported in	5.38	3.00	3.00	6.42	5.38
15	2.96	-	-	3.15	-	-	Reported in	6.40	3.15	3.15	-	6.40
22	3.12	-	-	3.25	-	-	-	-	3.38	-	-	-
29	-	-	-	3.31	-	-	-	-	3.30	-	-	-

Compiled from reports received from the Fruit & Vegetable Division AMS, U.S. Department of Agriculture, Market News Branch, Washington, D.C., and records maintained by the *Federal-State Market News, Sacramento, Calif.

TABLE 7. CALIFORNIA WEEKLY NECTARINE PRICES AND MOVEMENT AT SHIPPING POINT, 72s & LARGER, BY SELECTED VARIETIES, BY SIMPLE AVERAGE, BY SEASON, 1972-73

		CALIFORNIA WEEKLY SHIPPING POINT PRICES		TOTAL REPORTED WEEKLY MOVEMENT e/-			
		Simple Weekly Average a/		California		Total U.S.	
		1972	1973	1972	1973	1972	1973
		(Dollars per 2-layer lug, 72s & lgr. unless otherwise stated)		(Cars & carlot equivalents)			
		EARLY SEASON b/					
		96s & lgr.	80-88s				
April	29-May 5	-	-	5	-	6	-
May	6-12	-	-	10	-	13	-
	13-19	\$7.55	-	17	7	17	10
	20-26	7.75	\$8.60	54	17	56	22
		72s & lgr.	72s & lgr.				
June	27-June 2	7.40	8.50 c/	181	55	182	60
	3-9	6.15	8.25	344	153	345	160
	10-16	6.00	7.00	272	329	273	338
	17-23	5.65	7.00	414	276	414	285
	24-30	4.40	6.50	462	394	462	397
		MID-SEASON b/					
July	1-7	3.90	4.35	513	499	513	500
	8-14	3.90	4.15	422	559	422	559
		88s & lgr.	88s & lgr.				
	15-21	3.25	4.75	469	490	469	490
	22-28	3.70	4.80	509	400	511	402
		LATE SEASON b/					
	29-Aug. 4	4.30	4.70	367	366	370	370
		56s & lgr.					
Aug.	5-11	5.00	3.50	256	369	259	374
	12-18	5.00	3.70	210	337	214	344
		36-56s					
	19-25	5.00	3.60	206	309	212	316
	26-Sept. 1	5.20	3.75	135	214	143	223
		36-72s					
Sept.	2-8	6.40 d/	5.38	39	141	53	153
	9-15	-	6.25 d/	7	46	18	56
	16-22	-	-	-	15	8	24
	23-29	-	-	-	2	5	4
TOTAL SEASONAL MOVEMENT				4,892	4,978	4,965	5,087

Compiled from reports and records of the Fruit & Vegetable Division, AMS, U.S. Department of Agriculture, Market News Branch, Washington, D.C. and Sacramento, Ca. a/ Averages rounded to nearest 5¢. b/ Prices generally represent Central San Joaquin Valley quotation of 72 size & lgr. pack in 2-layer lugs, and cover the following varieties by season: EARLY SEASON Mayred, Red June & Early Sungrand; MID-SEASON Sun Grand & Le Grand; LATE SEASON Late Le Grand & September Grand. c/ Arm King variety-no other quotations were reported for the week. d/ Last f.o.b. price for season. e/ Movement figures are final.

TABLE 8. INDEX OF F.O.B. SHIPPING POINT PRICE REPORTING PERIODS FOR ALL QUOTED NECTARINE VARIETIES IN THE CENTRAL AND SOUTHERN SAN JOAQUIN VALLEY, IN LUGS 1973 (Detail of Data Listed Below can be Found in the "Daily Deciduous Fruit Report" Published at Sacramento)

Variety	2-Layer Lugs	26# Volume-fill Lugs	Variety	2-Layer Lugs
Mayred	May 21-25		Granderli	July 11-27
Arm King	May 23-June 12	June 12 only	Red Grand	July 11-Aug. 9
Sunbrite	June 3-8		Royal Grand	July 11 only
Mayfair	June 4-22	June 14-22	Hi-Red	July 12-Aug. 3
May Grand	June 4-28	June 12-22	Grandandy	July 16-17
Crimson Gold	June 5-12	June 12 only	Le Grand	July 19-Aug. 14
Red June	June 5-25	June 12-22	Clinton-Strawberry	July 24-Aug. 10
June Grand	June 11-25	June 12-22	Sun Flame	July 26-Aug. 3
Zee Gold	June 11-21	June 12-15	Late Le Grand	July 26-Sept. 4
Sun King	June 12-20	June 12-13	Niagara	July 26-27
Early Sungrand	June 11-July 16	June 18 only	Gold King	Aug. 7-Sept. 6
Sunrise	June 12-22	June 22 only	Regal Grand	Aug. 7-Sept. 4
Independence	June 19-July 17		Flame Kist	Aug. 8-Sept. 12
Moon Grand	June 28-July 10		Autumn Grand	Aug. 13-Sept. 14
Star Grand	July 2-17		Harry Grand	Aug. 16-24
Sun Grand	July 5-30		September Grand	Aug. 20-Sept. 14
Fantasia	July 11-Aug. 10		Richard's Grand	Aug. 27-29
Flavor Top	July 11-Aug. 8		Sun Free	Sept. 5-11

Compiled from the daily record of f.o.b. shipping point prices reported in the daily Deciduous Fruit Report issued by the Sacramento office of the Federal-State Market News Service.

TABLE 9.

F.O.B. SHIPPING POINT PRICES OF NECTARINES IN THE CENTRAL AND SOUTHERN SAN JOAQUIN VALLEY, BY SELECTED VARIETIES, BY DAYS 1973

-Dollars per 2-layer lug-

	MAYRED			ARM KING				RED JUNE			
	108-112s	96s	80-88s	108-112s	96s	80-88s	72s & Lgr.	108s	96s	80-88s	72s & Lgr.
May 21	\$6.75-7.00	\$7.25-8.00	\$8.75-9.00								
22	6.75-7.00	7.50	8.50								
23	6.75-7.00	7.50	8.50								
24	6.75-7.00	7.50	8.50								
25	6.75-7.00	7.50	8.50	\$6.50-7.00	\$7.50-8.00	\$8.50-9.00	-				
May 28				holiday	holiday	holiday	holiday				
29				6.50	7.50	8.50	\$9.00				
30				6.50	7.50	8.50	9.00				
31				6.50	7.50	8.50	9.00				
June 1				6.50	7.50	8.50	9.00				
June 4				6.50	7.50	8.50	9.00				
5				6.50	7.50	8.50	9.00	\$6.50	\$7.50	\$8.50	\$9.00
6				5.50	6.50	7.50	8.00	5.50	6.50	7.50	8.00
7				5.50	6.50	7.50	8.00	5.50	6.50	7.50	8.00
8				5.50	6.50	7.50	8.00	5.50	6.50	7.50	8.00
June 11				4.50	5.00	6.00	7.00	4.50	5.00	6.00	7.00
12								4.50	5.00	6.00	7.00
13								4.00-4.50	5.00	6.00	7.00
14	\$5.00	\$6.00	\$7.00					4.00-4.50	5.00	6.00	7.00
15	5.00	6.00	7.00					4.00-4.50	5.00	6.00	7.00
June 18	5.00	6.00	7.00					4.00-4.50	5.00	6.00	7.00
19	5.00	6.00	7.00					4.00-4.50	5.00	6.00	7.00
20	5.00	6.00	7.00					4.00-4.50	5.00	6.00	7.00
21	-	-	-					4.00-4.50	5.00	6.00	7.00
22	5.00	6.00	7.00					4.50	5.00	6.00	7.00
June 25	5.00	6.00	7.00					4.00-4.50	5.00	6.00	7.00
26	5.00	6.00	-								
27	4.50	5.00	5.50								
28	4.00-4.50	4.50-5.00	5.00-5.50								
29											
July 2											
3	3.50-4.00	4.00-4.50	4.50	\$3.50-4.00	\$4.00-4.50	\$4.50					
4	3.50	4.00	4.50								
5	holiday	holiday	holiday	holiday	holiday	holiday					
6	3.50	4.00	4.50	3.50	4.00	4.50					
July 9	3.50	4.00	4.50	3.50	4.00	4.50					
10	88-96s	80-84s		88-96s	80-84s						
11	3.50	4.00	-	3.50	4.00	-					
12	3.00-3.50	3.50-4.00	4.00	3.00-3.50	3.50-4.00	4.00					
13	3.00-3.50	3.50-4.00	4.00	3.00-3.50	3.50-4.00	4.00					
July 16	3.50-4.00	4.00-4.50	4.50	3.50-4.00	4.00-4.50	4.50					
17				4.00	4.50	-					
18											
19				4.00-4.50	5.00	-				\$5.00	
20				4.00-4.50	5.00	-				5.00	

(Continued)

TABLE 9. F.O.B. SHIPPING POINT PRICES OF NECTARINES IN THE CENTRAL AND SOUTHERN SAN JOAQUIN VALLEY, BY SELECTED VARIETIES, BY DAYS 1973 (Cont'd)

-Dollars per 2-layer lug-

	SUN GRAND (Cont'd)			LE GRAND (Cont'd)	LATE LE GRAND		AUTUMN GRAND	
	96s	88s & Lgr.	72s & Lgr.	88s & Lgr.	88s & Lgr.	56s & Smlr.	88s & Lgr.	56s & Smlr.
July 23	4.50	5.00	-	5.00	-	-	-	-
24	-	5.00	-	-	-	-	-	-
25	-	5.00	-	4.50	-	-	-	-
26	-	5.00	-	4.50	\$5.00	-	-	-
27	-	5.00	-	4.50	5.00	-	-	-
July 30	-	5.00	-	4.50	5.00	-	-	-
31	-	-	-	4.50	5.00	-	-	-
Aug. 1	-	-	-	4.00-4.50	4.50-5.00	-	-	-
2	-	-	-	4.00	4.00	\$4.50	-	-
3	-	-	-	4.00	4.00	-	-	-
Aug. 6	-	-	-	4.00	4.00	4.50	-	-
7	-	-	-	3.50-4.00	4.00	-	-	-
8	-	-	-	3.50	3.50	4.00	-	-
9	-	-	-	-	3.50	4.00	-	-
10	-	-	-	3.50	54s & Lgr.	56s & Smlr.	AUTUMN GRAND	
Aug. 13	-	-	-	3.50	3.50	4.00	88s & Lgr.	56s & Smlr.
14	-	-	-	-	3.50	4.00	\$4.00	-
15	-	-	-	-	3.50-4.00	4.00	54s & Lgr.	-
16	SEPTEMBER GRAND			-	3.50-4.00	4.00	3.50-4.00	\$4.00
17	30-56s	36-88s	60-80s	-	3.50-4.00	4.00	3.50-4.00	4.00
Aug. 20	\$3.50	-	\$4.00	-	3.50	4.00	3.50	4.00
21	3.50	-	4.00	-	3.50	4.00	3.50	4.00
22	3.50	-	4.00	-	3.50	4.00	3.50	4.00
23	36-50s	-	4.00	-	36-50s	4.00	36-50s	4.00
24	3.50-4.00	-	4.00	-	3.50-4.00	4.00	3.50-4.00	4.00
Aug. 27	36-50s	-	4.00	-	36-50s	4.00	36-50s	4.00
28	3.50-4.00	-	4.00	-	3.50-4.00	4.00	3.50-4.00	4.00
29	3.50-4.00	-	4.00	-	3.50-4.00	4.00	3.50-4.00	4.00
30	3.50-4.00	-	4.00	-	3.50-4.00	4.00	3.50-4.00	4.00
31	-	\$4.00	-	-	3.50-4.00	4.00	36-88s	-
Sept. 3	holiday	holiday	holiday	-	3.50-4.00	4.00	4.00	holiday
4	36-72s	4.50-5.00	-	-	-	-	4.50-5.00	-
5	5.00-5.50	-	-	-	-	-	36-72s	-
6	5.00-6.00	-	-	-	-	-	5.00-5.50	-
7	-	6.00	-	-	-	-	5.00-6.00	-
Sept. 10	holiday	holiday	holiday	-	-	-	36-88s	-
11	6.00-6.50	-	-	-	-	-	6.00	-
12	-	6.00-6.50	-	-	-	-	36-72s	-
13	-	6.00-6.50	-	-	-	-	6.00-6.50	-
14	-	6.50	-	-	-	-	36-88s	-
				- LAST REPORT -			6.00-6.50	-
							6.50	-

Compiled from daily prices reported by the Fresno office and issued by the Sacramento office of the Federal-State Market News Service. Basis of shipping point prices: Daily prices represent the first quoted price or price range and include those prices defined as "some". Prices defined as "few" and "occasional" are not included in this tabulation.

III. AUCTION PRICES

TABLE 10. ALL AUCTION CALIFORNIA NECTARINE SALES AND AVERAGES BY CONTAINERS, WITH TOTAL TONNAGE AND ALL CONTAINER AVERAGES 1969-73

Year	Lugs a/ (Approx. 20-24# Net, Mostly 22#)	Avg. 20-24#	Crates b/ (Approx. 27-32# Net, Mostly 29#)	Avg. 27-32#	Cartons a/ (Approx. 20-24# Net, Mostly 22#)	Avg. 20-24#	Flats c/ (Approx. 8-10# Net, Mostly 10#)	Avg. 8-10#	Total (In Tons)	Avg. (All Pkgs)
1969	501,172	\$3.86	7,985	\$4.45	18,112	\$4.10	2,556	\$3.47	5,840.6	\$3.87
1970	377,924	4.11	20,676	3.79	40,901	3.57	1,853	4.30	4,916.1	4.04
1971	407,390	4.28	1,145	6.30	27,182	4.58	4,437	4.67	4,819.1	4.31
1972	358,242	5.03	-	-	18,202	5.67	-	-	4,140.9	5.06
1973	257,196	5.32	-	-	7,651	5.60	-	-	2,913.3	5.33

Compiled by Federal-State Market News Service, Sacramento, California. a/ Mostly 2-layer tray pack containers. b/ 4-basket pack. c/ 1-layer tray pack containers.

TABLE 11. WEIGHTED AVERAGE SALES AND VOLUME OF CALIFORNIA NECTARINES SOLD AT EASTERN AUCTIONS BY VARIETY, BY CONTAINER, 1969-73

Variety	1969		1970		1971		1972		1973	
	Lugs	Avg.	Lugs	Avg.	Lugs	Avg.	Lugs	Avg.	Lugs	Avg.
	In Lugs, 2 layer tray pack									
Arm King	-	-	-	-	522	\$9.92	3,170	\$7.86	1,121	\$10.32
Arm Red	399	\$3.76	-	-	-	-	100	10.55	-	-
Autumn Gold	-	-	-	-	1,600	.90	-	-	-	-
Autumn Grand	1,575	5.66	-	-	10,724	2.29	13,266	6.45	11,231	5.87
Clinton-Strawberry	636	3.85	1,140	\$2.05	638	2.29	1,835	4.10	-	-
Crimson Gold	205	4.70	-	-	850	6.16	299	5.66	215	4.90
Early Sun Grand	101,402	4.18	92,121	4.37	80,641	5.14	61,996	4.72	47,927	5.46
Fantasia	-	-	320	4.02	581	3.49	3,168	5.12	2,795	5.46
Flame Kist	-	-	-	-	-	-	264	6.23	-	-
Flame Mist	-	-	-	-	132	3.30	-	-	-	-
Flavor Top	-	-	153	4.01	-	-	2,150	4.31	2,323	5.64
Gold King	31,148	3.59	21,644	3.77	20,387	2.83	22,782	5.82	24,766	4.68
Golden Grand	1,640	1.89	79	3.73	-	-	-	-	-	-
Grand Early	5,797	4.59	2,902	3.23	1,047	5.30	7,666	5.03	115	6.09
Grand Prize	1,946	2.32	-	-	605	3.55	-	-	-	-
Grand River	2,532	3.81	2,175	3.91	2,156	5.17	2,355	2.98	-	-
Granddandy	1,575	4.23	1,575	3.09	5,155	5.95	1,791	5.22	350	6.24
Granderli	7,917	4.52	14,353	3.50	-	-	2,313	4.86	6,010	6.08
Grandeur	1,316	3.74	148	4.05	-	-	-	-	-	-
Hi-Red	-	-	1,225	5.94	2,041	4.98	1,162	4.01	-	-
Independence	4,514	3.92	11,081	3.25	19,440	4.92	15,526	4.25	8,965	5.22
June Belle	-	-	819	8.06	2,175	11.04	120	10.73	-	-
June Grand	7,129	5.30	9,587	6.89	3,147	7.56	3,755	4.45	-	-
Kent Grand	-	-	-	-	-	-	105	3.94	330	6.36
Kona Gold	-	-	-	-	-	-	-	-	300	6.41
Late Le Grand	83,883	2.54	47,233	3.73	54,912	3.21	44,098	5.37	22,255	4.46
Late Star Grand	-	-	658	3.10	-	-	-	-	-	-
Le Grand	29,681	3.15	35,321	3.74	31,569	2.72	23,151	5.00	18,696	4.47
May Grand	-	-	590	6.44	3,543	6.02	12,548	5.00	11,740	6.93
Mayfair	959	3.75	249	11.41	125	11.71	2,097	4.06	375	6.75
Moon Grand	-	-	999	4.47	2,696	6.16	3,105	4.73	2,680	6.16
Niagara Grand	-	-	-	-	-	-	369	4.69	605	6.24
Panamint	740	2.98	-	-	-	-	-	-	-	-
Red Grand	29,742	4.24	13,802	4.36	46,813	3.90	16,515	5.26	16,943	4.31
Red June	25,728	4.41	18,485	5.81	20,026	5.89	21,485	5.12	15,298	6.86
Red King	-	-	1,644	3.09	-	-	-	-	-	-
Regal Grand	3,375	4.85	2,501	2.44	4,385	3.41	4,451	5.81	11,522	5.36
Richard's Grand	6,902	5.38	5,531	6.45	10,227	3.96	4,587	6.46	710	2.74
Rose Grand	-	-	-	-	-	-	300	5.34	-	-
Rosita	-	-	-	-	-	-	100	6.45	-	-
Royal Grand	-	-	-	-	2,007	4.16	-	-	110	5.85
Ruby Gold	725	3.18	-	-	-	-	200	4.81	-	-
September Grand	13,476	5.65	8,793	5.55	2,595	2.84	4,800	6.57	4,205	5.98
Spring Grand	1,649	4.62	27	3.70	-	-	235	5.12	-	-
Star Grand	3,699	4.10	2,990	2.58	2,971	3.61	5,030	4.58	1,868	5.59
Star Grand II	-	-	521	3.85	-	-	-	-	-	-
Strawberry Le Grand	-	-	-	-	440	6.44	-	-	7,584	4.79
Summer Grand	-	-	-	-	-	-	5,535	5.13	1,285	5.36
Sun Flame	-	-	-	-	-	-	-	-	200	5.62
Sun Grand	97,049	3.83	65,772	3.24	53,805	4.72	38,028	4.29	30,893	5.13
Sunbright	14,708	6.10	4,056	6.55	15,638	4.44	20,805	4.69	-	-
Sunrise	18,205	3.76	9,430	4.30	3,272	4.55	2,495	3.47	120	4.68
Tom Grand	-	-	-	-	-	-	1,560	5.24	-	-
Zee Gold	920	3.08	-	-	525	5.81	1,325	5.33	3,659	7.27
TOTAL	501,172	\$3.86	377,924	\$4.11	407,390	\$4.28	358,242	\$5.03	257,196	\$5.32

(Continued)

TABLE 11. WEIGHTED AVERAGE SALES AND VOLUME OF CALIFORNIA NECTARINES SOLD AT EASTERN AUCTIONS BY VARIETY, BY CONTAINER, 1969-73 (Cont'd)

Variety	1969		1970		1971		1972		1973	
	Cartons	Avg.	Cartons	Avg.	Cartons	Avg.	Cartons	Avg.	Cartons	Avg.
	In Cartons, 2 layer tray pack									
Arm King	-	-	-	-	-	-	-	-	810	\$6.36
Autumn Grand	-	-	894	\$5.66	3,299	\$4.11	8,677	\$6.59	-	-
Clinton-Strawberry	-	-	-	-	-	-	-	-	300	5.56
Early Sun Grand	940	\$3.80	8,515	3.96	2,180	4.18	486	4.96	538	6.30
Flavor Top	-	-	-	-	-	-	-	-	796	5.71
Gold King	3,255	4.88	85	2.00	6,025	3.70	130	6.11	-	-
Grandandy	-	-	-	-	212	5.04	-	-	-	-
Granderli	-	-	-	-	-	-	-	-	208	4.12
Independence	365	3.75	2,872	1.94	1,860	6.22	1,727	5.00	2,835	5.48
Late Le Grand	4,521	3.52	5,737	2.64	-	-	-	-	-	-
Le Grand	-	-	1,379	3.73	1,248	3.45	3,266	4.30	-	-
May Grand	-	-	-	-	665	6.66	359	5.38	642	6.95
Red Grand	-	-	271	4.00	1,650	4.06	-	-	-	-
Red June	1,428	3.58	4,871	4.75	6,026	5.68	1,024	5.07	-	-
Regal Grand	1,612	4.14	1,304	4.77	-	-	685	6.61	436	5.08
Richard's Grand	-	-	-	-	745	4.52	-	-	-	-
September Grand	2,669	5.05	1,554	3.35	-	-	-	-	-	-
Star Grand	-	-	-	-	326	4.14	-	-	-	-
Strawberry Le Grand	1,492	4.81	-	-	-	-	-	-	-	-
Sun Grand	830	3.54	13,419	3.40	1,569	3.71	1,848	4.60	1,086	4.65
Sunrise	1,000	3.25	-	-	1,377	4.76	-	-	-	-
TOTAL	18,112	\$4.10	40,901	\$3.57	27,182	\$4.58	18,202	\$5.67	7,651	\$5.60

Compiled by Federal-State Market News Service, Sacramento, California.

TABLE 12. INDEX OF CALIFORNIA NECTARINE SALES AT EASTERN AUCTIONS BY VARIETY, BY MARKET, BY PRINCIPAL PACKAGE TYPE, BY SALES PERIOD 1973

(Detail of Data Listed Below Can Be Found In The "Daily Deciduous Fruit Report", Published At Sacto.)

Variety	Market	Lugs, 2-Layer Tray Pack	Cartons, 2-Layer Tray Pack
Arm King	N.Y., Phila. & Pittsb.	June 2-16	June 23
Autumn Grand	N.Y. & Phila.	Sept. 1-15	
Clinton-Strawberry	N.Y. & Phila.		Aug. 4
Crimson Gold	N.Y.	June 16-July 14	
Early Sun Grand	Chgo., Det., N.Y., Phila. & Pittsb.	June 30-July 28	July 7-14
Fantasia	N.Y. & Phila.	Aug. 11	
Flavor Top	N.Y. & Phila.	July 21-Aug. 4	July 28-Aug. 4
Gold King	N.Y., Phila & Pittsb.	Aug. 18-Sept. 8	
Grand Early	N.Y.	Aug. 18	
Grandandy	N.Y.	July 28	
Granderli	N.Y. & Phila.	July 21-Aug. 11	July 28
Independence	N.Y. & Phila.	July 7-28	July 7-Aug. 4
Kent Grand	N.Y.	Aug. 4	
Kona Gold	N.Y.	July 14	
Late Le Grand	Det., N.Y., Phila. & Pittsb.	Aug. 11-Sept. 1	
Le Grand	Det., N.Y. & Pittsb.	Aug. 4-Sept. 1	
May Grand	Det., N.Y., Phila. & Pittsb.	June 16-July 21	June 23
Mayfair	N.Y.	June 16-30	
Moon Grand	N.Y.	July 7-21	
Niagara Grand	N.Y.	Aug. 4-11	
Red Grand	N.Y. & Phila.	Aug. 4-18	
Red June	Chgo., Det., N.Y., Phila. & Pittsb.	June 16-July 7	
Regal Grand	N.Y. & Pittsb.	Aug. 25-Sept. 15	Sept. 1
Richard's Grand	N.Y.	Sept. 15	
Royal Grand	N.Y.	July 28	
September Grand	N.Y.	Sept. 8-15	
Star Grand	N.Y. & Pittsb.	July 21-Aug. 4	
Strawberry Le Grand	N.Y. & Phila.	Aug. 11-18	
Summer Grand	N.Y.	July 28-Aug. 4	
Sun Flame	N.Y.	Aug. 4	
Sun Grand	Chgo., Det., N.Y., Phila. & Pittsb.	June 30-Aug. 4	July 28-Aug. 4
Sunrise	N.Y.	June 30	
Zee Gold	Det., N.Y. & Pittsb.	June 16-July 14	

Compiled from Daily Deciduous Fruit Reports and records maintained by the Federal-State Market News Service, Sacramento, California.

TABLE 13. TOTAL SALES VOLUME AND WEIGHTED AVERAGES OF CALIFORNIA NECTARINES AT EASTERN AUCTIONS, BY AUCTION MARKET, IN 2-LAYER LUGS - 1973 WITH 1972 COMPARISONS

Year	Chicago		Detroit		New York		Philadelphia		Pittsburgh		Total	
	Lugs	Avg.	Lugs	Avg.	Lugs	Avg.	Lugs	Avg.	Lugs	Avg.	Lugs	Avg.
1973	1,170	\$5.02	9,380	\$5.24	195,207	\$5.24	29,156	\$5.19	22,283	\$6.32	257,196	\$5.32
1972	31,342	5.27	14,831	5.07	249,254	5.01	34,486	4.60	28,329	5.38	358,242	5.03

Compiled by Federal-State Market News Service Sacramento, California.

TABLE 14. WEIGHTED AVERAGE SALES & VOLUME OF CALIFORNIA NECTARINES SOLD AT ALL EASTERN AUCTIONS BY VARIETIES, BY WEEKS, IN LUGS - 1973 a/

In Lugs, 2-Layer Tray Pack											
Variety, Week & Season Total	All Auctions		Variety, Week & Season Total	All Auctions		Variety, Week & Season Total	All Auctions		Variety, Week & Season Total	All Auctions	
	Lugs	Avg.		Lugs	Avg.		Lugs	Avg.		Lugs	Avg.
ARM KING			LATE LE GRAND			ROYAL GRAND					
June 2	500	\$10.53	Aug. 11	535	\$3.14	July 28	110	\$5.85			
9	300	10.97	18	12,278	4.48	Total	110	\$5.85			
16	321	9.38	25	7,074	4.89	SEPTEMBER GRAND					
Total	1,121	\$10.32	Sept. 1	2,368	3.38	Sept. 8	720	\$5.87			
AUTUMN GRAND			Total	22,255	\$4.46	Total	15	3,485	6.00		
Sept. 1	3,267	\$6.53	LE GRAND			Sept. 8	720	\$5.87			
8	3,261	5.96	Aug. 4	2,215	\$5.76	Total	15	3,485	6.00		
15	4,703	5.35	11	8,073	4.86	STAR GRAND					
Total	11,231	\$5.87	18	5,169	3.65	July 21	1,320	\$5.65			
CRIMSON GOLD			25	1,704	4.75	Aug. 4	548	5.43			
June 16	65	\$7.62	Sept. 1	1,535	2.98	Total	1,868	\$5.59			
30	45	6.35	Total	18,696	\$4.47	STRAWBERRY LE GRAND					
July 14	105	2.60	MAYFAIR			Aug. 11	5,102	\$5.29			
Total	215	\$4.90	June 16	85	\$7.89	18	2,482	3.76			
EARLY SUN GRAND			30	290	6.41	Total	7,584	\$4.79			
June 30	1,435	\$7.04	Total	375	\$6.75	SUMMER GRAND					
July 7	3,475	7.10	MAY GRAND			July 28	1,250	\$5.36			
14	25,013	5.43	June 16	810	\$8.12	Aug. 4	35	5.35			
21	13,187	4.83	23	4,240	7.10	Total	1,285	\$5.36			
28	4,817	4.94	30	5,405	6.66	SUN FLAME					
Total	47,927	\$5.46	July 7	1,265	6.78	Aug. 4	200	\$5.62			
FANTASIA			21	20	4.60	Total	200	\$5.62			
Aug. 11	2,795	\$5.46	Total	11,740	\$6.93	SUN GRAND					
Total	2,795	\$5.46	MOON GRAND			June 30	205	\$7.27			
FLAVOR TOP			July 7	945	\$7.53	July 21	3,312	3.32			
July 21	1,867	\$5.65	14	1,180	5.34	28	14,107	5.47			
28	246	6.14	21	555	5.59	Aug. 4	13,269	5.18			
Aug. 4	210	5.01	Total	2,680	\$6.16	Total	30,893	\$5.13			
Total	2,323	\$5.64	NIAGARA GRAND			SUNRISE					
GOLD KING			Aug. 4	195	\$6.23	June 30	120	\$4.68			
Aug. 18	230	\$.72	11	410	6.25	Total	120	\$4.68			
25	7,085	4.86	Total	605	\$6.24	ZEE GOLD					
Sept. 1	12,740	4.65	RED GRAND			June 16	1,370	\$8.07			
8	4,711	4.68	Aug. 4	3,132	\$6.14	23	1,013	7.45			
Total	24,766	\$4.68	11	8,249	4.13	30	1,211	6.38			
GRANDANDY			18	5,562	3.54	July 14	65	4.01			
July 28	350	\$6.24	Total	16,943	\$4.31	Total	3,659	\$7.27			
Total	350	\$6.24	RED JUNE			TOTAL 1973			257,196	\$5.32	
GRAND EARLY			June 16	719	\$9.27	" 1972			358,242	5.03	
Aug. 18	115	\$6.09	23	6,452	6.68	" 1971			407,390	4.28	
Total	115	\$6.09	30	5,555	6.39	" 1970			377,924	4.11	
GRANDERLI			July 7	2,572	7.68	" 1969			501,172	3.86	
July 21	824	\$5.64	Total	15,298	\$6.86						
28	2,487	6.02	REGAL GRAND								
Aug. 4	2,499	6.28	Aug. 25	3,065	\$4.99						
11	200	6.22	Sept. 1	2,727	4.71						
Total	6,010	\$6.08	8	2,665	5.68						
INDEPENDENCE			15	3,065	6.04						
July 7	225	\$5.52	Total	11,522	\$5.36						
14	5,969	5.25	RICHARD'S GRAND								
21	2,579	5.15	Sept. 15	710	\$2.74						
28	192	5.16	Total	710	\$2.74						
Total	8,965	\$5.22									
KENT GRAND											
Aug. 4	330	\$6.36									
Total	330	\$6.36									
KONA GOLD											
July 14	300	\$6.41									
Total	300	\$6.41									

Compiled by Federal-State Market News Service Sacramento, California.

a/ Includes Chicago, Detroit, New York, Philadelphia & Pittsburgh.

TABLE 15.

SIMPLE WEEKLY AVERAGE WHOLESALE MARKET PRICES OF SAN JOAQUIN VALLEY NECTARINES AT LOS ANGELES, BY SELECTED VARIETIES 1971-73

Dollars per 2-layer lug, 72s & larger, unless otherwise stated

Week Ending	MAYRED			RED JUNE			EARLY SUNGRAND			SUN GRAND			RED GRAND			LATE LE GRAND			
	1971	1972	1973	1971	1972	1973	1971	1972	1973	1971	1972	1973	1971	1972	1973	1971	1972	1973	
	FLATS	54s & Lgr.		72s & Lgr.	60-72s		72s & Lgr.	48-72s		72s & Lgr.	44-72s		72s & Lgr.	48-72s		72s & Lgr.	40-72s		
May 11		\$4.38																	
18		7.38a/	\$4.75																
25	\$4.47	10.00b/	9.50c/																
June 1	4.13				\$8.50														
8				\$8.00d/	6.40			\$6.50											
15				7.75	5.55	\$5.88		5.00											
22				6.30		5.25	\$6.00	5.45											
29						5.25e/	5.30	4.63	\$6.63										
July 6							5.06	3.47	4.88		\$3.46			\$3.38					
13							4.75	3.13	4.25		4.25	3.20	\$3.93	3.20					
20											4.45		4.08	3.20	\$4.21				
27											4.45		4.80	3.13	4.80		\$3.33	\$4.50	
Aug. 3		AUTUMN GRAND			SEPTEMBER GRAND						4.28		4.19	3.13	4.45		3.56	3.50	4.20
10	4.0-64s	64-72s	40-72s							4.25							2.88	4.60	4.05
17		\$5.50			72s & Lgr.	40-72s											2.85	4.58	4.25
24		5.45			\$4.80														4.00
31		5.50	\$4.00	\$3.37	5.25														
Sept. 7		6.13	4.25	3.25		\$4.24													
14			4.80	3.75		4.80													
21	\$3.72		5.75	3.75		5.20													
28	3.75			3.75		6.50f/													
Oct. 5	3.38			3.38															
12	3.38			3.94															

Compiled from records maintained by the Federal-State Market News Service, Sacramento, Ca. a/ 25# lugs 120 count. b/ 70-72s lugs. c/ 70s & Lgr. lugs. d/ 96s lugs. e/ 88s. f/ Quoted as Late September Grand, 32-72s.

TABLE 16.

SIMPLE WEEKLY AVERAGE WHOLESALE MARKET PRICES OF CALIFORNIA NECTARINES AT SAN FRANCISCO, BY SELECTED VARIETIES, 1971-73

Dollars per 2-layer lug, 72s & larger, unless otherwise stated

Week Ending	MAYRED			RED JUNE			EARLY SUNGRAND			SUN GRAND			RED GRAND			LATE LE GRAND			
	1971	1972	1973	1971	1972	1973	1971	1972	1973	1971	1972	1973	1971	1972	1973	1971	1972	1973	
	FLATS	54s & Lgr.		72s & Lgr.	60-72s		72s & Lgr.	56-72s		72s & Lgr.	50-70s		72s & Lgr.	50-56s		72s & Lgr.	40-70s		
May 11		\$4.46																	
18		4.54	\$5.13																
25	\$4.80	4.88	4.20																
June 1	4.88		3.25		\$10.44														
8			4.78		7.93			\$7.50											
15				\$8.84	6.50	\$7.81		6.83											
22				6.60	6.31	7.80	\$7.13	6.35	\$8.38										
29						7.88	6.48	5.80	7.03										
July 6							5.63	4.97	4.69	\$5.50									
13							5.78	4.38	4.93	\$5.34	4.44								
20							5.85	4.63	4.63	5.25	3.75	\$4.90	\$4.81	\$5.19					
27							5.75	4.63	4.63	4.75	4.80	4.80	4.58	5.25			\$4.00		
Aug. 3		SEPTEMBER GRAND			AUTUMN GRAND						4.50		4.50	5.25			4.45	4.48	\$4.75
10		72s & Lgr.	48-64s		50-72s	50-70s	48-60s						2.75			\$3.75	5.03	4.48	
17		\$5.63											2.75			3.13	5.50	4.40	
24		5.68	\$4.13			\$6.25							2.75			2.75		4.30	
31		5.98	4.05			6.25	\$4.38						2.75			2.75		4.38	
Sept. 7	\$3.00	6.66	4.50			6.38	4.72									3.13			
14	3.50	7.22	6.90			7.25	6.65												
21	3.75	7.38	7.25			7.25	7.25												
28	4.08	7.38	7.25			7.25													
Oct. 5	4.25			\$3.75													3.50		
12	3.95			4.00													4.00		
19	3.75			3.75															

Compiled from records maintained by the Federal-State Market News Service, Sacramento, Ca.

V. ACREAGE, YIELD, PRODUCTION, AND VALUE

TABLE 17. CALIFORNIA NECTARINE ACREAGE, PRODUCTION, YIELD, AVERAGE GROWER RETURN, AND VALUE OF PRODUCTION, 1964-73

Year	Acreage a/			Planted by Yrs b/	Production-In Tons c/			Yield Tons Per Acre	Avg. Grower Return Per Ton e/	Value of Production e/
	Bearing	Non- Bearing	Total		Total	Wasted d/	Utilized			
1964	9,188	414	9,602	287	75,000	-	74,800	8.16	\$94.40	\$7,088,000
1965	9,190	440	9,630	423	67,000	2,200	63,700	7.29	85.80	5,573,000
1966	8,860	1,000	9,860	551	68,000	(200)	67,800	7.67	138.00	9,656,000
1967	8,540	1,680	10,220	870	55,000	(200)	54,800	6.44	155.00	8,635,000
1968	7,700	3,400	11,100	1,523	64,000	(200)	63,800	8.31	146.00	9,408,000
1969	7,790	4,500	12,290	1,098	66,000	(200)	65,800	8.47	140.00	9,240,000
1970	7,790	4,670	12,460	1,128	66,000	(200)	65,800	8.47	152.00	10,032,000
1971	8,507	5,205	13,712	1,460	69,000	-	69,000	8.11	155.00	10,695,000
1972	9,890	4,949	14,839	1,263	86,000	-	86,000	8.70	176.00	15,222,000
1973	10,770 f/	g/	g/	g/	87,000	-	87,000	8.08	254.00	22,098,000

Source: California Crop & Livestock Reporting Service Fruit & Nut Statistics and Fruit & Nut Acreage Reports, issued at Sacramento, California. a/ From Fruit & Nut Acreage Report. b/ Acres planted during years shown and actually standing in 1972. c/ Fresh ton basis; from Statistical Reporting Service, USDA Non-Citrus Fruits & Nuts Annual Summaries issued at Washington, D.C. d/ Figures listed in parentheses () were listed as home use. e/ First delivery point basis. f/ Estimated. g/ Information not available at time of release.

TABLE 18. CALIFORNIA NECTARINE GROWER ESTIMATED RETURNS, BY UTILIZATION METHOD, 1969-73
(Price of fruit at first delivery point, per ton basis)

Year	Fresh Market			Processed			Season Average Price Basis b/
	Interstate	Intrastate	Total	Canned-Frozen-Dried a/			
- DOLLARS PER TON -							
1969	\$135.00	\$155.00	\$142.00	\$84.00			\$140.00
1970	155.00	145.00	153.00	89.00			152.00
1971	160.00	145.00	156.00	85.50			155.00
1972	171.00	198.00	177.00	104.00			176.00
1973	c/	d/	256.00	98.10			254.00

Source: California Crop & Livestock Reporting Service Fruit & Nut Statistics Report issued at Sacramento, California. a/ Fresh basis. b/ First delivery point basis. c/ Information not available at time of release.

TABLE 19. CALIFORNIA NECTARINE PRODUCTION BY UTILIZATION IN TONS, 1969-73

Year	Fresh Market			Processed			Total Production
	Interstate	Intrastate	Total	Canned-Frozen-Dried a/			
- IN TONS -							
1969	43,560	21,440	65,000	1,000			66,000
1970	52,950	11,850	64,800	1,200			66,000
1971	50,590	17,510	68,100	900			69,000
1972	67,000	17,900	85,400	600			86,000
1973	b/	b/	86,100	900			87,000

Source: California Crop & Livestock Reporting Service Fruit & Nut Statistics Report issued at Sacramento, California. a/ Fresh basis. b/ Information not available at time of release.